



Shropshire Council
Legal and Democratic Services
Shirehall
Abbey Foregate
Shrewsbury
SY2 6ND

Date: Thursday 10 July 2014

**Committee:
HEALTH AND WELLBEING BOARD**

Date: Friday, 18 July 2014
Time: 9.30 am
Venue: Shrewsbury Room, Shirehall, Abbey Foregate, Shrewsbury,
Shropshire, SY2 6ND

You are requested to attend the above meeting.
The Agenda is attached

Claire Porter
Corporate Head of Legal and Democratic Services (Monitoring Officer)

Members of Health and Wellbeing Board

| | |
|---------------------------------|--------------------|
| Karen Calder (Chairman) | Dr Helen Herritty |
| Ann Hartley | Dr Bill Gowans |
| Lee Chapman | Paul Tulley |
| Professor Rod Thomson | Jane Randall-Smith |
| Stephen Chandler | Graham Urwin |
| Karen Bradshaw | Jackie Jeffrey |
| Dr Caron Morton (Vice Chairman) | |

Your Committee Officer is:

Karen Nixon Committee Officer
Tel: 01743 252724
Email: karen.nixon@shropshire.gov.uk

AGENDA

1 Apologies for Absence

To receive apologies for absence.

2 Minutes

To confirm the Minutes of the meeting of the Health and Wellbeing Board held on 6 June 2014, which will follow, marked 2.

Contact Karen Nixon on 01743 252724.

3 Public Question Time

To receive any questions, statements or petitions from the public, notice of which has been given in accordance with Procedure Rule 14.

4 Disclosable Pecuniary Interests

Members are reminded that they must not participate in the discussion or voting on any matter in which they have a Disclosable Pecuniary Interest and should leave the room prior to the commencement of the debate.

5 EVIDENCE: Shropshire Health Profile (Pages 1 - 44)

A report is attached.

Contact: Prof Rod Thomson, Director of Public Health Tel 01743 253934.

6 QUALITY & PERFORMANCE: Better Care Fund Update

A report will be made.

Contact: Stephen Chandler, Director of Adult Services Tel 01743 253704

7 QUALITY & PERFORMANCE: Future Fit Update

A report will be made.

Contact: Dr Caron Morton, Accountable Officer, Shropshire CCG Tel 01743 277580.

8 QUALITY & PERFORMANCE: Operational Resilience and Capacity Planning

A report will be made.

Contact: Paul Tulley and Dr Julie Davies, Shropshire CCG, Tel 01743 277500.

9 QUALITY & PERFORMANCE: HWB Delivery Group Report to Board

A report will be made.

Contact: Prof Rod Thomson, Director of Public Health Tel 01743 253934.

10 FOR DECISION/ENDORSEMENT: CCG 5 Year Plan

A report will be made.

Contact: Paul Tulley, Shropshire CCG, Tel 01743 277500.

11 FOR DECISION/ENDORSEMENT: Shropshire Dementia Strategy Update

A report will follow marked 11.

Contact: Louise Jones, Commissioning Lead, Dementia Services Tel 01743 277500.

12 INFORMATION: Children Young People and Families Plan Final Document

A report will be made.

Contact: Karen Bradshaw, Director of Children's Services Tel 01743 254201.

13 INFORMATION: Children and Young People Mental Health Services Update

A report will be made.

Contact: Dr Julie Davies, Shropshire CCG, Tel 01743 277500.

14 INFORMATION: The Local Nature Partnership Update/Plan Refresh (Pages 45 - 48)

A report is attached marked 14.

Contact: Councillor Cecilia Motley or Dan Wrench Tel 01743 252529.



Public Health
England

Health Profiles Local Authority Summaries

West Midlands Public Health England Centre

TECHNICAL DETAILS

PURPOSE OF THIS SUMMARY

These summaries aim to capture how local areas have 'changed' on the Health Profile indicators by comparing data contained in the published 2013 Health Profiles and the Health Profiles published on 8th July 2014 (where these data are comparable between these two publications only).

TARTAN RUG DISPLAY

- **Red-Amber-Green (RAG) ratings:** For each indicator, a RAG rating is assigned to the local value contained in the 2013 and 2014 Health Profile. The RAG rating shows how the local value compares with the England value; being red if the local area is significantly worse than, amber if similar to, or green if significantly better than the England value. The RAG rating is assigned by calculating whether or not the 95% confidence interval of the local value overlaps with the England value. A green rating should not be interpreted to mean that the issue is not an important public health problem for the local area, rather, comparatively to England, the local area is significantly better.
- **Rating change 2013 v 2014:** This column indicates any 'change' between the 2013 and 2014 RAG ratings when compared to the England value for the respective years for each indicator. This 'change' compares the RAG ratings assigned in these years, described as either, improved \uparrow , worsened \downarrow , or no change \pm . For example, if an area had been assigned a red rating in the 2013 Health Profile and has an amber rating in the 2014 Health Profile, this column would indicate improvement \uparrow . Not applicable (N/A) is displayed where the indicator is not comparable between the 2013 and 2014 Health Profile data (see indicator notes for further details).
- **Local change 2013 2014:** This column indicates where there has been a significant change in the local value between the 2013 and 2014 Health Profile data. This 'change' in the local value is described as either, improved \uparrow , worsened \downarrow , or no change \pm . A significant change is noted where the 95% confidence intervals for the 2013 and 2014 local values do not overlap. For further information on using confidence intervals to make comparisons, refer to the APHO Technical Briefing on commonly used public health statistics available at <http://www.apho.org.uk/resource/item.aspx?RID=48457> Not applicable (N/A) is displayed where the indicator is not comparable between the 2013 and 2014 Health Profile data (see indicator notes for further details).
- Consideration of the 'rating change' and 'local change' columns will allow a local area to say things like, "Our RAG rating has improved and our local value has also significantly improved. This shows our local area is improving faster than other areas as shown by our relative position to the England value."
- **Comparisons with other areas:** For county and unitary authority areas, RAG ratings are given for the other county and unitary authority areas in the Public Health England Centre area. For lower tier local authority areas, RAG ratings are given for the other lower tier local authority areas in the county as well as the county rating. For all local authority summaries, the RAG rating is given for the PHE Centre (where available) and the region, along with the England value.
- Where an **asterisk (*)** is given in place of a value or RAG rating, no data is available for this local area.

INDICATOR NOTES

Brief indicator explanations are given below for data included in the 2014 Health Profiles (2013 Health Profiles details in brackets)

Our Communities

- 1 Deprivation: % people in this area living in 20% most deprived areas in England, 2010 (No comparison – no update to data)
- 2 Proportion of children in poverty: % children (under 16) in families receiving means-tested benefits & low income, 2011 (2010)
- 3 Statutory homelessness: Crude rate per 1,000 households, 2012/13 (2011/12) (No comparison – change of methodology)
- 4 GCSE achieved (5A*-C inc. Eng & Maths): % key stage 4, 2012/13 (2011/12)
- 5 Violent crime: Recorded violence against the person crimes, crude rate per 1,000 population, 2012/13 (2011/12) (No comparison – change of methodology)
- 6 Long term unemployment: Crude rate per 1,000 population aged 16-64, 2013 (2012)

Children's and Young People's Health

- 7** Smoking status at time of delivery: % women who smoke at time of delivery, 2012/13 (No comparison – change of methodology)
- 8** Breastfeeding initiation: % mothers who breastfeed their babies in the first 48 hours after delivery, 2012/13 (No comparison – change of methodology)
- 9** Obese children (year 6): % school children in Year 6 (age 10-11), 2012/13 (2011/12)
- 10** Alcohol-specific hospital stays (under 18): Persons under 18 admitted to hospital due to alcohol specific conditions, crude rate per 100,000 population, 2010/11 to 2012/13 (pooled) (2007/08 to 2009/10 (pooled)) (No comparison – change of methodology)
- 11** Under 18 conceptions: Under-18 conception rate per 1,000 females aged 15-17 (crude rate) 2012 (No comparison – change of methodology)

Adults Health and Lifestyle

- 12** Smoking prevalence: % adults aged 18 and over, 2012 (No comparison – change of methodology)
- 13** Physically active adults: % adults achieving at least 150 mins physical activity per week, 2012 (No comparison – no update to data)
- 14** Obese adults: % adults classified as obese, Active People Survey 2012 (No comparison – change of methodology)
- 15** Excess weight in adults: % adults classified as overweight or obese, Active People Survey 2012 (No comparison – new indicator for 2014 Health Profiles)

Disease and Poor Health

- 16** Incidence of malignant melanoma: Directly age standardised rate per 100,000 population, aged under 75, 2009-2011 (2008-2010)
- 17** Hospital stays for self-harm: Directly age sex standardised rate per 100,000 population, 2012/13 (No comparison – change of methodology)
- 18** Hospital stays for alcohol related harm: The number of admissions involving an alcohol related primary diagnosis or an alcohol related external cause, directly age sex standardised rate per 100,000 population, 2012/13 (No comparison – new indicator for 2014 Health Profiles)
- 19** Drug misuse: Estimated users of opiate and/or crack cocaine aged 15-64, crude rate per 1,000 population, 2010/11 (No comparison – no update to data)
- 20** Recorded diabetes: % people on GP registers with a recorded diagnosis of diabetes 2012/13 (2011/12)
- 21** Incidence of tuberculosis: Crude rate per 100,000 population, 2010-2012 (No comparison – change of methodology)
- 22** Acute sexually transmitted infections: Crude rate per 100,000 population, 2012 (chlamydia screening coverage may influence rate) (No comparison – no update to data)
- 23** Hip fracture in 65s and over: Directly age and sex standardised rate for emergency admissions, per 100,000 population aged 65 and over, 2012/13 (No comparison – change of methodology)

Life expectancy and causes of death

- 24** Excess winter deaths: Ratio of excess winter deaths (observed winter deaths minus expected deaths based on non-winter deaths) to average non-winter deaths 1.08.09 – 31.07.12 (1.08.08-31.07.11)
- 25** Life expectancy – male: At birth, 2010-2012 (2009-2011)
- 26** Life expectancy – female: At birth, 2010-2012 (2009-2011)
- 27** Infant mortality: Rate per 1,000 live births, 2010-2012 (2009-2011)
- 28** Smoking related deaths: Directly age standardised rate per 100,000 population aged 35 and over, 2010-2012 (No comparison – change of methodology)
- 29** Suicide rate: Directly age standardised mortality rate from suicide and injury of undetermined intent per 100,000 population 2010-2012 (No comparison – new indicator for 2014 Health Profiles)
- 30** Under 75 mortality rate: Cardiovascular: Directly age standardised rate per 100,000 population aged under 75, 2010-2012 (No comparison – change of methodology)
- 31** Under 75 mortality rate: Cancer: Directly age standardised rate per 100,000 population aged under 75, 2010-2012 (No comparison – change of methodology)
- 32** Killed and seriously injured on roads: Rate per 100,000 population, 2010-2012 (2009-2011)

FOR FURTHER INFORMATION PLEASE VISIT THE HEALTH PROFILES WEBSITE WHICH CAN BE FOUND AT www.healthprofiles.info

Upper Tier and Unitary Local Authorities

Birmingham

HEALTH PROFILE 2014 – Summary of changes

See technical document for explanation of the purpose of this summary, the tartan rug display and indicator details

KEY: ■ NO change

▲ Improvement

▼ Worsening

| Health Profile indicator (see technical document for further details) | 2014 | 2013 | 2014 Ratings for Counties / Unitary Authorities in PHE Centre area | | | | | | | | | | | | | | | | 2014 | | | | | | | | | | | | | | | | |
|---|------|-------|--|---|---|---|---|---|---|---|---|----|----|----|----|----|----|----|------|----|----|----|----|----|----|----|----|----|----|----|----|------|-------|------|------|
| | | | 1 | 2 | 3 | 4 | 5 | 6 | 7 | 8 | 9 | 10 | 11 | 12 | 13 | 14 | 15 | 16 | | 17 | 18 | 19 | 20 | 21 | 22 | 23 | 24 | 25 | 26 | 27 | 28 | 29 | 30 | 31 | 32 |
| 1 Deprivation | N/A | 56.2 | ■ | ■ | ■ | ■ | ■ | ■ | ■ | ■ | ■ | ■ | ■ | ■ | ■ | ■ | ■ | ■ | ■ | ■ | ■ | ■ | ■ | ■ | ■ | ■ | ■ | ■ | ■ | ■ | ■ | ■ | ■ | ■ | 20.4 |
| 2 Children in poverty | N/A | 32.2 | ■ | ■ | ■ | ■ | ■ | ■ | ■ | ■ | ■ | ■ | ■ | ■ | ■ | ■ | ■ | ■ | ■ | ■ | ■ | ■ | ■ | ■ | ■ | ■ | ■ | ■ | ■ | ■ | ■ | ■ | ■ | 20.6 | |
| 3 Statutory homelessness | N/A | 2.2 | ■ | ■ | ■ | ■ | ■ | ■ | ■ | ■ | ■ | ■ | ■ | ■ | ■ | ■ | ■ | ■ | ■ | ■ | ■ | ■ | ■ | ■ | ■ | ■ | ■ | ■ | ■ | ■ | ■ | ■ | 2.4 | | |
| 4 GCSE achieved | ▼ | 59.9 | ■ | ■ | ■ | ■ | ■ | ■ | ■ | ■ | ■ | ■ | ■ | ■ | ■ | ■ | ■ | ■ | ■ | ■ | ■ | ■ | ■ | ■ | ■ | ■ | ■ | ■ | ■ | ■ | ■ | ■ | 60.8 | | |
| 5 Violent crime | N/A | 12.4 | ■ | ■ | ■ | ■ | ■ | ■ | ■ | ■ | ■ | ■ | ■ | ■ | ■ | ■ | ■ | ■ | ■ | ■ | ■ | ■ | ■ | ■ | ■ | ■ | ■ | ■ | ■ | ■ | ■ | ■ | 10.6 | | |
| 6 Long term unemployment | N/A | 23.6 | ■ | ■ | ■ | ■ | ■ | ■ | ■ | ■ | ■ | ■ | ■ | ■ | ■ | ■ | ■ | ■ | ■ | ■ | ■ | ■ | ■ | ■ | ■ | ■ | ■ | ■ | ■ | ■ | ■ | ■ | 9.9 | | |
| 7 Smoking status at time of delivery | N/A | 9.5 | ■ | ■ | ■ | ■ | ■ | ■ | ■ | ■ | ■ | ■ | ■ | ■ | ■ | ■ | ■ | ■ | ■ | ■ | ■ | ■ | ■ | ■ | ■ | ■ | ■ | ■ | ■ | ■ | ■ | ■ | 12.7 | | |
| 8 Breastfeeding initiation | N/A | 68.4 | ■ | ■ | ■ | ■ | ■ | ■ | ■ | ■ | ■ | ■ | ■ | ■ | ■ | ■ | ■ | ■ | ■ | ■ | ■ | ■ | ■ | ■ | ■ | ■ | ■ | ■ | ■ | ■ | ■ | ■ | 73.9 | | |
| 9 Obese children (year 6) | ■ | 23.4 | ■ | ■ | ■ | ■ | ■ | ■ | ■ | ■ | ■ | ■ | ■ | ■ | ■ | ■ | ■ | ■ | ■ | ■ | ■ | ■ | ■ | ■ | ■ | ■ | ■ | ■ | ■ | ■ | ■ | 18.9 | | | |
| 10 Alcohol specific hospital stays <18 | N/A | 30.5 | ■ | ■ | ■ | ■ | ■ | ■ | ■ | ■ | ■ | ■ | ■ | ■ | ■ | ■ | ■ | ■ | ■ | ■ | ■ | ■ | ■ | ■ | ■ | ■ | ■ | ■ | ■ | ■ | ■ | ■ | 44.9 | | |
| 11 Under 18 conceptions | N/A | 30.0 | ■ | ■ | ■ | ■ | ■ | ■ | ■ | ■ | ■ | ■ | ■ | ■ | ■ | ■ | ■ | ■ | ■ | ■ | ■ | ■ | ■ | ■ | ■ | ■ | ■ | ■ | ■ | ■ | ■ | ■ | 27.7 | | |
| 12 Smoking prevalence | N/A | 17.5 | ■ | ■ | ■ | ■ | ■ | ■ | ■ | ■ | ■ | ■ | ■ | ■ | ■ | ■ | ■ | ■ | ■ | ■ | ■ | ■ | ■ | ■ | ■ | ■ | ■ | ■ | ■ | ■ | ■ | ■ | 19.5 | | |
| 13 % of physically active adults | N/A | 46.9 | ■ | ■ | ■ | ■ | ■ | ■ | ■ | ■ | ■ | ■ | ■ | ■ | ■ | ■ | ■ | ■ | ■ | ■ | ■ | ■ | ■ | ■ | ■ | ■ | ■ | ■ | ■ | ■ | ■ | ■ | 56.0 | | |
| 14 Obese adults | N/A | 23.0 | ■ | ■ | ■ | ■ | ■ | ■ | ■ | ■ | ■ | ■ | ■ | ■ | ■ | ■ | ■ | ■ | ■ | ■ | ■ | ■ | ■ | ■ | ■ | ■ | ■ | ■ | ■ | ■ | ■ | ■ | 23.0 | | |
| 15 Excess weight in adults | N/A | 64.0 | ■ | ■ | ■ | ■ | ■ | ■ | ■ | ■ | ■ | ■ | ■ | ■ | ■ | ■ | ■ | ■ | ■ | ■ | ■ | ■ | ■ | ■ | ■ | ■ | ■ | ■ | ■ | ■ | ■ | ■ | 63.8 | | |
| 16 Incidence of malignant melanoma | ■ | 10.4 | ■ | ■ | ■ | ■ | ■ | ■ | ■ | ■ | ■ | ■ | ■ | ■ | ■ | ■ | ■ | ■ | ■ | ■ | ■ | ■ | ■ | ■ | ■ | ■ | ■ | ■ | ■ | ■ | ■ | ■ | 14.8 | | |
| 17 Hospital stays for self-harm | N/A | 198.5 | ■ | ■ | ■ | ■ | ■ | ■ | ■ | ■ | ■ | ■ | ■ | ■ | ■ | ■ | ■ | ■ | ■ | ■ | ■ | ■ | ■ | ■ | ■ | ■ | ■ | ■ | ■ | ■ | ■ | ■ | 188.0 | | |
| 18 Hospital stays for alcohol related harm | N/A | 691 | ■ | ■ | ■ | ■ | ■ | ■ | ■ | ■ | ■ | ■ | ■ | ■ | ■ | ■ | ■ | ■ | ■ | ■ | ■ | ■ | ■ | ■ | ■ | ■ | ■ | ■ | ■ | ■ | ■ | ■ | 637 | | |
| 19 Drug misuse | N/A | 14.8 | ■ | ■ | ■ | ■ | ■ | ■ | ■ | ■ | ■ | ■ | ■ | ■ | ■ | ■ | ■ | ■ | ■ | ■ | ■ | ■ | ■ | ■ | ■ | ■ | ■ | ■ | ■ | ■ | ■ | ■ | 8.6 | | |
| 20 Recorded diabetes | ■ | 7.61 | ■ | ■ | ■ | ■ | ■ | ■ | ■ | ■ | ■ | ■ | ■ | ■ | ■ | ■ | ■ | ■ | ■ | ■ | ■ | ■ | ■ | ■ | ■ | ■ | ■ | ■ | ■ | ■ | ■ | 6.01 | | | |
| 21 Incidence of TB | N/A | 37.6 | ■ | ■ | ■ | ■ | ■ | ■ | ■ | ■ | ■ | ■ | ■ | ■ | ■ | ■ | ■ | ■ | ■ | ■ | ■ | ■ | ■ | ■ | ■ | ■ | ■ | ■ | ■ | ■ | ■ | ■ | 15.1 | | |
| 22 Acute sexually transmitted infections | N/A | 1084 | ■ | ■ | ■ | ■ | ■ | ■ | ■ | ■ | ■ | ■ | ■ | ■ | ■ | ■ | ■ | ■ | ■ | ■ | ■ | ■ | ■ | ■ | ■ | ■ | ■ | ■ | ■ | ■ | ■ | ■ | 804 | | |
| 23 Hip fractures in people >65 | N/A | 6115 | ■ | ■ | ■ | ■ | ■ | ■ | ■ | ■ | ■ | ■ | ■ | ■ | ■ | ■ | ■ | ■ | ■ | ■ | ■ | ■ | ■ | ■ | ■ | ■ | ■ | ■ | ■ | ■ | ■ | ■ | 568.1 | | |
| 24 Excess winter deaths | N/A | 15.6 | ■ | ■ | ■ | ■ | ■ | ■ | ■ | ■ | ■ | ■ | ■ | ■ | ■ | ■ | ■ | ■ | ■ | ■ | ■ | ■ | ■ | ■ | ■ | ■ | ■ | ■ | ■ | ■ | ■ | ■ | 16.5 | | |
| 25 Life expectancy at birth (male) | ■ | 77.6 | ■ | ■ | ■ | ■ | ■ | ■ | ■ | ■ | ■ | ■ | ■ | ■ | ■ | ■ | ■ | ■ | ■ | ■ | ■ | ■ | ■ | ■ | ■ | ■ | ■ | ■ | ■ | ■ | ■ | 79.2 | | | |
| 26 Life expectancy at birth (female) | ■ | 82.1 | ■ | ■ | ■ | ■ | ■ | ■ | ■ | ■ | ■ | ■ | ■ | ■ | ■ | ■ | ■ | ■ | ■ | ■ | ■ | ■ | ■ | ■ | ■ | ■ | ■ | ■ | ■ | ■ | ■ | ■ | 83.0 | | |
| 27 Infant mortality | ■ | 6.7 | ■ | ■ | ■ | ■ | ■ | ■ | ■ | ■ | ■ | ■ | ■ | ■ | ■ | ■ | ■ | ■ | ■ | ■ | ■ | ■ | ■ | ■ | ■ | ■ | ■ | ■ | ■ | ■ | ■ | 4.1 | | | |
| 28 Smoking related deaths | N/A | 302.2 | ■ | ■ | ■ | ■ | ■ | ■ | ■ | ■ | ■ | ■ | ■ | ■ | ■ | ■ | ■ | ■ | ■ | ■ | ■ | ■ | ■ | ■ | ■ | ■ | ■ | ■ | ■ | ■ | ■ | ■ | 2919 | | |
| 29 Suicide rate | N/A | 6.0 | ■ | ■ | ■ | ■ | ■ | ■ | ■ | ■ | ■ | ■ | ■ | ■ | ■ | ■ | ■ | ■ | ■ | ■ | ■ | ■ | ■ | ■ | ■ | ■ | ■ | ■ | ■ | ■ | ■ | ■ | 8.5 | | |
| 30 Under 75 mortality rate: CV | N/A | 1018 | ■ | ■ | ■ | ■ | ■ | ■ | ■ | ■ | ■ | ■ | ■ | ■ | ■ | ■ | ■ | ■ | ■ | ■ | ■ | ■ | ■ | ■ | ■ | ■ | ■ | ■ | ■ | ■ | ■ | ■ | 81.1 | | |
| 31 Under 75 mortality rate: cancer | N/A | 1619 | ■ | ■ | ■ | ■ | ■ | ■ | ■ | ■ | ■ | ■ | ■ | ■ | ■ | ■ | ■ | ■ | ■ | ■ | ■ | ■ | ■ | ■ | ■ | ■ | ■ | ■ | ■ | ■ | ■ | ■ | 146.5 | | |
| 32 Killed and seriously injured on roads | ■ | 39.8 | ■ | ■ | ■ | ■ | ■ | ■ | ■ | ■ | ■ | ■ | ■ | ■ | ■ | ■ | ■ | ■ | ■ | ■ | ■ | ■ | ■ | ■ | ■ | ■ | ■ | ■ | ■ | ■ | ■ | ■ | 40.5 | | |

Coventry

HEALTH PROFILE 2014 – Summary of changes

See technical document for explanation of the purpose of this summary, the tartan rug display and indicator details

KEY: - NO change
 ↑ Improvement
 ↓ Worsening

| Health Profile indicator (see technical document for further details) | | 2014 | | 2013 | | 2014 Ratings for Counties / Unitary Authorities in PHE Centre area | | | | | | | | | | | | | | | | 2014 | | | | | | | | | | | | | | |
|---|--|------------------------------------|--------|-------|--------|--|------|---|---|---|---|---|---|---|----|----|----|----|----|----|----|------|----|----|----|----|----|----|----|----|----|----|----|----|------|-------|
| | | Value | Change | Value | Change | 1 | 2 | 3 | 4 | 5 | 6 | 7 | 8 | 9 | 10 | 11 | 12 | 13 | 14 | 15 | 16 | 17 | 18 | 19 | 20 | 21 | 22 | 23 | 24 | 25 | 26 | 27 | 28 | 29 | 30 | 31 |
| ■ | 1 Deprivation | N/A | | 32.2 | | N/A | | | | | | | | | | | | | | | | | | | | | | | | | | | | | | 20.4 |
| | 2 Children in poverty | N/A | | 25.9 | | N/A | | | | | | | | | | | | | | | | | | | | | | | | | | | | | | 20.6 |
| | 3 Statutory homelessness | N/A | | 0.4 | | N/A | | | | | | | | | | | | | | | | | | | | | | | | | | | | | | 2.4 |
| | 4 GCSE achieved | ↓ | - | 56.6 | | 58.9 | | | | | | | | | | | | | | | | | | | | | | | | | | | | | | 60.8 |
| | 5 Violent crime | N/A | | 12.5 | | N/A | | | | | | | | | | | | | | | | | | | | | | | | | | | | | | 10.6 |
| | 6 Long term unemployment | N/A | | 11.9 | | N/A | | | | | | | | | | | | | | | | | | | | | | | | | | | | | | 9.9 |
| ■ | 7 Smoking status at time of delivery | N/A | | 13.6 | | N/A | | | | | | | | | | | | | | | | | | | | | | | | | | | | | 12.7 | |
| | 8 Breastfeeding initiation | N/A | | 74.9 | | N/A | | | | | | | | | | | | | | | | | | | | | | | | | | | | | 73.9 | |
| | 9 Obese children (year 6) | - | - | 20.4 | | 20.6 | | | | | | | | | | | | | | | | | | | | | | | | | | | | | 18.9 | |
| ■ | 10 Alcohol specific hospital stays <18 | N/A | | 48.1 | | N/A | | | | | | | | | | | | | | | | | | | | | | | | | | | | | 44.9 | |
| | 11 Under 18 conceptions | N/A | | 38.6 | | N/A | | | | | | | | | | | | | | | | | | | | | | | | | | | | | 27.7 | |
| | 12 Smoking prevalence | N/A | | 17.9 | | N/A | | | | | | | | | | | | | | | | | | | | | | | | | | | | | 19.5 | |
| | 13 % of physically active adults | N/A | | 49.4 | | N/A | | | | | | | | | | | | | | | | | | | | | | | | | | | | | 56.0 | |
| | 14 Obese adults | N/A | | 26.2 | | N/A | | | | | | | | | | | | | | | | | | | | | | | | | | | | | 23.0 | |
| | 15 Excess weight in adults | N/A | | 56.5 | | N/A | | | | | | | | | | | | | | | | | | | | | | | | | | | | | | 63.8 |
| ■ | 16 Incidence of malignant melanoma | - | - | 11.4 | | 11.7 | | | | | | | | | | | | | | | | | | | | | | | | | | | | | 14.8 | |
| | 17 Hospital stays for self-harm | N/A | | 298.0 | | N/A | | | | | | | | | | | | | | | | | | | | | | | | | | | | | | 188.0 |
| | 18 Hospital stays for alcohol related harm | N/A | | 863 | | N/A | | | | | | | | | | | | | | | | | | | | | | | | | | | | | | 637 |
| | 19 Drug misuse | N/A | | 10.3 | | N/A | | | | | | | | | | | | | | | | | | | | | | | | | | | | | | 8.6 |
| | 20 Recorded diabetes | - | ↓ | 6.01 | | 5.74 | | | | | | | | | | | | | | | | | | | | | | | | | | | | | 6.01 | |
| | 21 Incidence of TB | N/A | | 34.7 | | N/A | | | | | | | | | | | | | | | | | | | | | | | | | | | | | 15.1 | |
| | 22 Acute sexually transmitted infections | N/A | | 1041 | | N/A | | | | | | | | | | | | | | | | | | | | | | | | | | | | | | 804 |
| | 23 Hip fractures in people >65 | N/A | | 578.9 | | N/A | | | | | | | | | | | | | | | | | | | | | | | | | | | | | | 568.1 |
| | 24 Excess winter deaths | N/A | | 15.7 | | N/A | | | | | | | | | | | | | | | | | | | | | | | | | | | | | | 16.5 |
| | ■ | 25 Life expectancy at birth (male) | - | - | 78.1 | | 77.6 | | | | | | | | | | | | | | | | | | | | | | | | | | | | | 79.2 |
| 26 Life expectancy at birth (female) | | - | - | 82.1 | | 81.9 | | | | | | | | | | | | | | | | | | | | | | | | | | | | | | 83.0 |
| 27 Infant mortality | | - | - | 4.9 | | 5.2 | | | | | | | | | | | | | | | | | | | | | | | | | | | | | | 4.1 |
| 28 Smoking related deaths | | N/A | | 296.6 | | N/A | | | | | | | | | | | | | | | | | | | | | | | | | | | | | | 2919 |
| 29 Suicide rate | | N/A | | 10.2 | | N/A | | | | | | | | | | | | | | | | | | | | | | | | | | | | | | 8.5 |
| 30 Under 75 mortality rate: CV | | N/A | | 89.6 | | N/A | | | | | | | | | | | | | | | | | | | | | | | | | | | | | | 81.1 |
| 31 Under 75 mortality rate: cancer | | N/A | | 165.3 | | N/A | | | | | | | | | | | | | | | | | | | | | | | | | | | | | | 146.5 |
| 32 Killed and seriously injured on roads | | - | - | 36.0 | | 36.9 | | | | | | | | | | | | | | | | | | | | | | | | | | | | | | 40.5 |

Dudley

HEALTH PROFILE 2014 – Summary of changes

See technical document for explanation of the purpose of this summary, the tartan rug display and indicator details

KEY: -NO change

↑ Improvement

↓ Worsening

| Health Profile indicator (see technical document for further details) | | 2014 | 2013 | 2014 Ratings for Counties / Unitary Authorities in PHE Centre area | | | | | | | | | | | | | | | | | 2014 |
|---|--|------|-------|--|------|------|--|--|--|--|--|--|--|--|--|--|--|--|--|-------|------|
| | | | | 2014 Ratings for Counties / Unitary Authorities in PHE Centre area | | | | | | | | | | | | | | | | | |
| ■ | 1 Deprivation | N/A | 24.5 | | N/A | | | | | | | | | | | | | | | 20.4 | |
| | 2 Children in poverty | N/A | 22.8 | | N/A | | | | | | | | | | | | | | | 20.6 | |
| | 3 Statutory homelessness | N/A | 0.4 | | N/A | | | | | | | | | | | | | | | 2.4 | |
| | 4 GCSE achieved | ↑ | ↑ | 59.7 | | 56.1 | | | | | | | | | | | | | | | 60.8 |
| | 5 Violent crime | N/A | 6.9 | | N/A | | | | | | | | | | | | | | | | 10.6 |
| | 6 Long term unemployment | N/A | 17.6 | | N/A | | | | | | | | | | | | | | | | 9.9 |
| ■ | 7 Smoking status at time of delivery | N/A | 14.3 | | N/A | | | | | | | | | | | | | | | 12.7 | |
| | 8 Breastfeeding initiation | N/A | 54.1 | | N/A | | | | | | | | | | | | | | | 73.9 | |
| | 9 Obese children (year 6) | ■ | ■ | 22.7 | | 23.1 | | | | | | | | | | | | | | 18.9 | |
| | 10 Alcohol specific hospital stays <18 | N/A | 52.8 | | N/A | | | | | | | | | | | | | | | 44.9 | |
| ■ | 11 Under 18 conceptions | N/A | 34.6 | | N/A | | | | | | | | | | | | | | | 27.7 | |
| | 12 Smoking prevalence | N/A | 18.7 | | N/A | | | | | | | | | | | | | | | 19.5 | |
| | 13 % of physically active adults | N/A | 48.4 | | N/A | | | | | | | | | | | | | | | 56.0 | |
| ■ | 14 Obese adults | N/A | 27.8 | | N/A | | | | | | | | | | | | | | | 23.0 | |
| | 15 Excess weight in adults | N/A | 70.2 | | N/A | | | | | | | | | | | | | | | 63.8 | |
| | 16 Incidence of malignant melanoma | ■ | ■ | 13.7 | | 12.8 | | | | | | | | | | | | | | 14.8 | |
| | 17 Hospital stays for self-harm | N/A | 177.8 | | N/A | | | | | | | | | | | | | | | 188.0 | |
| | 18 Hospital stays for alcohol related harm | N/A | 778 | | N/A | | | | | | | | | | | | | | | 637 | |
| ■ | 19 Drug misuse | N/A | 9.6 | | N/A | | | | | | | | | | | | | | | 8.6 | |
| | 20 Recorded diabetes | ■ | ↓ | 6.49 | | 6.19 | | | | | | | | | | | | | | 6.01 | |
| | 21 Incidence of TB | N/A | 10.5 | | N/A | | | | | | | | | | | | | | | 15.1 | |
| | 22 Acute sexually transmitted infections | N/A | 449 | | N/A | | | | | | | | | | | | | | | 804 | |
| | 23 Hip fractures in people >65 | N/A | 596.6 | | N/A | | | | | | | | | | | | | | | 568.1 | |
| | 24 Excess winter deaths | N/A | 20.2 | | N/A | | | | | | | | | | | | | | | 16.5 | |
| | 25 Life expectancy at birth (male) | ■ | ■ | 78.9 | | 78.7 | | | | | | | | | | | | | | | 79.2 |
| 26 Life expectancy at birth (female) | ■ | ■ | 83.0 | | 82.8 | | | | | | | | | | | | | | | 83.0 | |
| ■ | 27 Infant mortality | ■ | ■ | 4.4 | | 4.1 | | | | | | | | | | | | | | 4.1 | |
| | 28 Smoking related deaths | N/A | 285.1 | | N/A | | | | | | | | | | | | | | | 2919 | |
| | 29 Suicide rate | N/A | 6.7 | | N/A | | | | | | | | | | | | | | | 8.5 | |
| | 30 Under 75 mortality rate: CV | N/A | 80.3 | | N/A | | | | | | | | | | | | | | | 81.1 | |
| | 31 Under 75 mortality rate: cancer | N/A | 155.9 | | N/A | | | | | | | | | | | | | | | 146.5 | |
| | 32 Killed and seriously injured on roads | ■ | ■ | 30.1 | | 31.5 | | | | | | | | | | | | | | | 40.5 |

Herefordshire

HEALTH PROFILE 2014 – Summary of changes

See technical document for explanation of the purpose of this summary, the tartan rug display and indicator details

KEY: ■ NO change
 ▲ Improvement
 ▼ Worsening

| Health Profile indicator (see technical document for further details) | 2014 | 2013 | 2014 Ratings for Counties / Unitary Authorities in PHE Centre area | | | | | | | | | | | | | | | | 2014 | | | | | | | | | | | | | | | | | |
|---|------|-------|--|---|---|---|---|---|---|---|---|----|----|----|----|----|----|----|------|----|----|----|----|----|----|----|----|----|----|----|----|----|-------|------|------|------|
| | | | 1 | 2 | 3 | 4 | 5 | 6 | 7 | 8 | 9 | 10 | 11 | 12 | 13 | 14 | 15 | 16 | | 17 | 18 | 19 | 20 | 21 | 22 | 23 | 24 | 25 | 26 | 27 | 28 | 29 | 30 | 31 | 32 | |
| 1 Deprivation | N/A | 6.0 | ■ | ■ | ■ | ■ | ■ | ■ | ■ | ■ | ■ | ■ | ■ | ■ | ■ | ■ | ■ | ■ | ■ | ■ | ■ | ■ | ■ | ■ | ■ | ■ | ■ | ■ | ■ | ■ | ■ | ■ | ■ | ■ | ■ | 20.4 |
| 2 Children in poverty | N/A | 14.4 | ■ | ■ | ■ | ■ | ■ | ■ | ■ | ■ | ■ | ■ | ■ | ■ | ■ | ■ | ■ | ■ | ■ | ■ | ■ | ■ | ■ | ■ | ■ | ■ | ■ | ■ | ■ | ■ | ■ | ■ | ■ | ■ | 20.6 | |
| 3 Statutory homelessness | N/A | 1.0 | ■ | ■ | ■ | ■ | ■ | ■ | ■ | ■ | ■ | ■ | ■ | ■ | ■ | ■ | ■ | ■ | ■ | ■ | ■ | ■ | ■ | ■ | ■ | ■ | ■ | ■ | ■ | ■ | ■ | ■ | ■ | ■ | 2.4 | |
| 4 GCSE achieved | ■ | ■ | ■ | ■ | ■ | ■ | ■ | ■ | ■ | ■ | ■ | ■ | ■ | ■ | ■ | ■ | ■ | ■ | ■ | ■ | ■ | ■ | ■ | ■ | ■ | ■ | ■ | ■ | ■ | ■ | ■ | ■ | ■ | 60.8 | | |
| 5 Violent crime | N/A | 9.8 | ■ | ■ | ■ | ■ | ■ | ■ | ■ | ■ | ■ | ■ | ■ | ■ | ■ | ■ | ■ | ■ | ■ | ■ | ■ | ■ | ■ | ■ | ■ | ■ | ■ | ■ | ■ | ■ | ■ | ■ | ■ | 10.6 | | |
| 6 Long term unemployment | N/A | 5.2 | ■ | ■ | ■ | ■ | ■ | ■ | ■ | ■ | ■ | ■ | ■ | ■ | ■ | ■ | ■ | ■ | ■ | ■ | ■ | ■ | ■ | ■ | ■ | ■ | ■ | ■ | ■ | ■ | ■ | ■ | ■ | 9.9 | | |
| 7 Smoking status at time of delivery | N/A | 13.8 | ■ | ■ | ■ | ■ | ■ | ■ | ■ | ■ | ■ | ■ | ■ | ■ | ■ | ■ | ■ | ■ | ■ | ■ | ■ | ■ | ■ | ■ | ■ | ■ | ■ | ■ | ■ | ■ | ■ | ■ | ■ | 12.7 | | |
| 8 Breastfeeding initiation | N/A | 78.0 | ■ | ■ | ■ | ■ | ■ | ■ | ■ | ■ | ■ | ■ | ■ | ■ | ■ | ■ | ■ | ■ | ■ | ■ | ■ | ■ | ■ | ■ | ■ | ■ | ■ | ■ | ■ | ■ | ■ | ■ | ■ | 73.9 | | |
| 9 Obese children (year 6) | ■ | ■ | ■ | ■ | ■ | ■ | ■ | ■ | ■ | ■ | ■ | ■ | ■ | ■ | ■ | ■ | ■ | ■ | ■ | ■ | ■ | ■ | ■ | ■ | ■ | ■ | ■ | ■ | ■ | ■ | ■ | ■ | 18.9 | | | |
| 10 Alcohol specific hospital stays <18 | N/A | 65.9 | ■ | ■ | ■ | ■ | ■ | ■ | ■ | ■ | ■ | ■ | ■ | ■ | ■ | ■ | ■ | ■ | ■ | ■ | ■ | ■ | ■ | ■ | ■ | ■ | ■ | ■ | ■ | ■ | ■ | ■ | 44.9 | | | |
| 11 Under 18 conceptions | N/A | 24.7 | ■ | ■ | ■ | ■ | ■ | ■ | ■ | ■ | ■ | ■ | ■ | ■ | ■ | ■ | ■ | ■ | ■ | ■ | ■ | ■ | ■ | ■ | ■ | ■ | ■ | ■ | ■ | ■ | ■ | ■ | 27.7 | | | |
| 12 Smoking prevalence | N/A | 16.7 | ■ | ■ | ■ | ■ | ■ | ■ | ■ | ■ | ■ | ■ | ■ | ■ | ■ | ■ | ■ | ■ | ■ | ■ | ■ | ■ | ■ | ■ | ■ | ■ | ■ | ■ | ■ | ■ | ■ | ■ | ■ | 19.5 | | |
| 13 % of physically active adults | N/A | 56.9 | ■ | ■ | ■ | ■ | ■ | ■ | ■ | ■ | ■ | ■ | ■ | ■ | ■ | ■ | ■ | ■ | ■ | ■ | ■ | ■ | ■ | ■ | ■ | ■ | ■ | ■ | ■ | ■ | ■ | ■ | ■ | 56.0 | | |
| 14 Obese adults | N/A | 23.7 | ■ | ■ | ■ | ■ | ■ | ■ | ■ | ■ | ■ | ■ | ■ | ■ | ■ | ■ | ■ | ■ | ■ | ■ | ■ | ■ | ■ | ■ | ■ | ■ | ■ | ■ | ■ | ■ | ■ | ■ | 23.0 | | | |
| 15 Excess weight in adults | N/A | 66.8 | ■ | ■ | ■ | ■ | ■ | ■ | ■ | ■ | ■ | ■ | ■ | ■ | ■ | ■ | ■ | ■ | ■ | ■ | ■ | ■ | ■ | ■ | ■ | ■ | ■ | ■ | ■ | ■ | ■ | ■ | 63.8 | | | |
| 16 Incidence of malignant melanoma | ■ | ■ | ■ | ■ | ■ | ■ | ■ | ■ | ■ | ■ | ■ | ■ | ■ | ■ | ■ | ■ | ■ | ■ | ■ | ■ | ■ | ■ | ■ | ■ | ■ | ■ | ■ | ■ | ■ | ■ | ■ | ■ | 14.8 | | | |
| 17 Hospital stays for self-harm | N/A | 167.5 | ■ | ■ | ■ | ■ | ■ | ■ | ■ | ■ | ■ | ■ | ■ | ■ | ■ | ■ | ■ | ■ | ■ | ■ | ■ | ■ | ■ | ■ | ■ | ■ | ■ | ■ | ■ | ■ | ■ | ■ | 188.0 | | | |
| 18 Hospital stays for alcohol related harm | N/A | 551 | ■ | ■ | ■ | ■ | ■ | ■ | ■ | ■ | ■ | ■ | ■ | ■ | ■ | ■ | ■ | ■ | ■ | ■ | ■ | ■ | ■ | ■ | ■ | ■ | ■ | ■ | ■ | ■ | ■ | ■ | 637 | | | |
| 19 Drug misuse | N/A | 7.4 | ■ | ■ | ■ | ■ | ■ | ■ | ■ | ■ | ■ | ■ | ■ | ■ | ■ | ■ | ■ | ■ | ■ | ■ | ■ | ■ | ■ | ■ | ■ | ■ | ■ | ■ | ■ | ■ | ■ | ■ | 8.6 | | | |
| 20 Recorded diabetes | ▲ | ■ | ■ | ■ | ■ | ■ | ■ | ■ | ■ | ■ | ■ | ■ | ■ | ■ | ■ | ■ | ■ | ■ | ■ | ■ | ■ | ■ | ■ | ■ | ■ | ■ | ■ | ■ | ■ | ■ | ■ | ■ | 6.01 | | | |
| 21 Incidence of TB | N/A | 2.7 | ■ | ■ | ■ | ■ | ■ | ■ | ■ | ■ | ■ | ■ | ■ | ■ | ■ | ■ | ■ | ■ | ■ | ■ | ■ | ■ | ■ | ■ | ■ | ■ | ■ | ■ | ■ | ■ | ■ | ■ | 15.1 | | | |
| 22 Acute sexually transmitted infections | N/A | 630 | ■ | ■ | ■ | ■ | ■ | ■ | ■ | ■ | ■ | ■ | ■ | ■ | ■ | ■ | ■ | ■ | ■ | ■ | ■ | ■ | ■ | ■ | ■ | ■ | ■ | ■ | ■ | ■ | ■ | ■ | 804 | | | |
| 23 Hip fractures in people >65 | N/A | 527.5 | ■ | ■ | ■ | ■ | ■ | ■ | ■ | ■ | ■ | ■ | ■ | ■ | ■ | ■ | ■ | ■ | ■ | ■ | ■ | ■ | ■ | ■ | ■ | ■ | ■ | ■ | ■ | ■ | ■ | ■ | 568.1 | | | |
| 24 Excess winter deaths | N/A | 15.5 | ■ | ■ | ■ | ■ | ■ | ■ | ■ | ■ | ■ | ■ | ■ | ■ | ■ | ■ | ■ | ■ | ■ | ■ | ■ | ■ | ■ | ■ | ■ | ■ | ■ | ■ | ■ | ■ | ■ | ■ | 16.5 | | | |
| 25 Life expectancy at birth (male) | ■ | ■ | ■ | ■ | ■ | ■ | ■ | ■ | ■ | ■ | ■ | ■ | ■ | ■ | ■ | ■ | ■ | ■ | ■ | ■ | ■ | ■ | ■ | ■ | ■ | ■ | ■ | ■ | ■ | ■ | ■ | ■ | 79.2 | | | |
| 26 Life expectancy at birth (female) | ■ | ■ | ■ | ■ | ■ | ■ | ■ | ■ | ■ | ■ | ■ | ■ | ■ | ■ | ■ | ■ | ■ | ■ | ■ | ■ | ■ | ■ | ■ | ■ | ■ | ■ | ■ | ■ | ■ | ■ | ■ | ■ | 83.0 | | | |
| 27 Infant mortality | ■ | ■ | ■ | ■ | ■ | ■ | ■ | ■ | ■ | ■ | ■ | ■ | ■ | ■ | ■ | ■ | ■ | ■ | ■ | ■ | ■ | ■ | ■ | ■ | ■ | ■ | ■ | ■ | ■ | ■ | ■ | ■ | 4.1 | | | |
| 28 Smoking related deaths | N/A | 257.0 | ■ | ■ | ■ | ■ | ■ | ■ | ■ | ■ | ■ | ■ | ■ | ■ | ■ | ■ | ■ | ■ | ■ | ■ | ■ | ■ | ■ | ■ | ■ | ■ | ■ | ■ | ■ | ■ | ■ | ■ | 2919 | | | |
| 29 Suicide rate | N/A | 10.2 | ■ | ■ | ■ | ■ | ■ | ■ | ■ | ■ | ■ | ■ | ■ | ■ | ■ | ■ | ■ | ■ | ■ | ■ | ■ | ■ | ■ | ■ | ■ | ■ | ■ | ■ | ■ | ■ | ■ | ■ | 8.5 | | | |
| 30 Under 75 mortality rate: CV | N/A | 78.6 | ■ | ■ | ■ | ■ | ■ | ■ | ■ | ■ | ■ | ■ | ■ | ■ | ■ | ■ | ■ | ■ | ■ | ■ | ■ | ■ | ■ | ■ | ■ | ■ | ■ | ■ | ■ | ■ | ■ | ■ | 81.1 | | | |
| 31 Under 75 mortality rate: cancer | N/A | 127.0 | ■ | ■ | ■ | ■ | ■ | ■ | ■ | ■ | ■ | ■ | ■ | ■ | ■ | ■ | ■ | ■ | ■ | ■ | ■ | ■ | ■ | ■ | ■ | ■ | ■ | ■ | ■ | ■ | ■ | ■ | 146.5 | | | |
| 32 Killed and seriously injured on roads | ■ | ■ | ■ | ■ | ■ | ■ | ■ | ■ | ■ | ■ | ■ | ■ | ■ | ■ | ■ | ■ | ■ | ■ | ■ | ■ | ■ | ■ | ■ | ■ | ■ | ■ | ■ | ■ | ■ | ■ | ■ | ■ | 40.5 | | | |

Sandwell

HEALTH PROFILE 2014 – Summary of changes

See technical document for explanation of the purpose of this summary, the tartan rug display and indicator details

KEY: • NO change
 ↑ Improvement
 ↓ Worsening

| Health Profile indicator (see technical document for further details) | 2014 | 2013 | 2014 Ratings for Counties / Unitary Authorities in PHE Centre area | | | | | | | | | | | | 2014 | | | | |
|---|------|-------|---|--|--|------|--|--|--|---|--|--|--|--|------|--|--|------|-------|
| | | | [Tartan rug display with 12 columns representing different local authorities] | | | | | | | | | | | | | | | | |
| 1 Deprivation | N/A | 59.4 | | | | | | | | | | | | | | | | 20.4 | |
| 2 Children in poverty | N/A | 29.9 | | | | | | | | | | | | | | | | | 20.6 |
| 3 Statutory homelessness | N/A | 0.1 | | | | | | | | | | | | | | | | | 2.4 |
| 4 GCSE achieved | ▯ ▯ | 54.2 | | | | 53.9 | | | | | | | | | | | | | 60.8 |
| 5 Violent crime | N/A | 9.4 | | | | | | | | | | | | | | | | | 10.6 |
| 6 Long term unemployment | N/A | 22.9 | | | | | | | | | | | | | | | | | 9.9 |
| 7 Smoking status at time of delivery | N/A | 13.7 | | | | | | | | * | | | | | | | | | 12.7 |
| 8 Breastfeeding initiation | N/A | 61.2 | | | | | | | | | | | | | | | | | 73.9 |
| 9 Obese children (year 6) | ▯ ▯ | 24.8 | | | | 25.2 | | | | | | | | | | | | | 18.9 |
| 10 Alcohol specific hospital stays <18 | N/A | 56.2 | | | | | | | | | | | | | | | | | 44.9 |
| 11 Under 18 conceptions | N/A | 38.5 | | | | | | | | | | | | | | | | | 27.7 |
| 12 Smoking prevalence | N/A | 22.8 | | | | | | | | | | | | | | | | | 19.5 |
| 13 % of physically active adults | N/A | 43.8 | | | | | | | | | | | | | | | | | 56.0 |
| 14 Obese adults | N/A | 25.4 | | | | | | | | | | | | | | | | | 23.0 |
| 15 Excess weight in adults | N/A | 66.3 | | | | | | | | | | | | | | | | | 63.8 |
| 16 Incidence of malignant melanoma | ▯ ▯ | 9.1 | | | | 7.7 | | | | | | | | | | | | | 14.8 |
| 17 Hospital stays for self-harm | N/A | 216.4 | | | | | | | | | | | | | | | | | 188.0 |
| 18 Hospital stays for alcohol related harm | N/A | 79.1 | | | | | | | | | | | | | | | | | 63.7 |
| 19 Drug misuse | N/A | 10.4 | | | | | | | | | | | | | | | | | 8.6 |
| 20 Recorded diabetes | ▯ ↓ | 7.84 | | | | 7.42 | | | | | | | | | | | | | 6.01 |
| 21 Incidence of TB | N/A | 35.1 | | | | | | | | | | | | | | | | | 15.1 |
| 22 Acute sexually transmitted infections | N/A | 720 | | | | | | | | | | | | | | | | | 804 |
| 23 Hip fractures in people >65 | N/A | 654.3 | | | | | | | | | | | | | | | | | 568.1 |
| 24 Excess winter deaths | N/A | 15.9 | | | | | | | | | | | | | | | | | 16.5 |
| 25 Life expectancy at birth (male) | ▯ ▯ | 76.8 | | | | 76.3 | | | | | | | | | | | | | 79.2 |
| 26 Life expectancy at birth (female) | ▯ ▯ | 81.3 | | | | 81.4 | | | | | | | | | | | | | 83.0 |
| 27 Infant mortality | ▯ ▯ | 7.1 | | | | 6.5 | | | | | | | | | | | | | 4.1 |
| 28 Smoking related deaths | N/A | 338.7 | | | | | | | | | | | | | | | | | 291.9 |
| 29 Suicide rate | N/A | 7.4 | | | | | | | | | | | | | | | | | 8.5 |
| 30 Under 75 mortality rate: CV | N/A | 108.5 | | | | | | | | | | | | | | | | | 81.1 |
| 31 Under 75 mortality rate: cancer | N/A | 171.2 | | | | | | | | | | | | | | | | | 146.5 |
| 32 Killed and seriously injured on roads | ▯ ▯ | 35.9 | | | | 36.4 | | | | | | | | | | | | | 40.5 |

Shropshire

HEALTH PROFILE 2014 – Summary of changes

See technical document for explanation of the purpose of this summary, the tartan rug display and indicator details

KEY: - NO change
 ↑ Improvement
 ↓ Worsening

| Health Profile indicator (see technical document for further details) | 2014 | 2013 | 2014 Ratings for Counties / Unitary Authorities in PHE Centre area | | | | | | | | | | | | | | | | 2014 | | | | | | | | | | | | | | | | | | |
|---|------|-------|--|---|---|---|---|---|---|---|---|----|----|----|----|----|----|----|------|----|----|----|----|----|----|----|----|----|----|----|----|----|----|----|----|-------|------|
| | | | 1 | 2 | 3 | 4 | 5 | 6 | 7 | 8 | 9 | 10 | 11 | 12 | 13 | 14 | 15 | 16 | | 17 | 18 | 19 | 20 | 21 | 22 | 23 | 24 | 25 | 26 | 27 | 28 | 29 | 30 | 31 | 32 | | |
| 1 Deprivation | N/A | 2.7 | | | | | | | | | | | | | | | | | | | | | | | | | | | | | | | | | | | 20.4 |
| 2 Children in poverty | N/A | 13.6 | | | | | | | | | | | | | | | | | | | | | | | | | | | | | | | | | | | 20.6 |
| 3 Statutory homelessness | N/A | 0.5 | | | | | | | | | | | | | | | | | | | | | | | | | | | | | | | | | | | 2.4 |
| 4 GCSE achieved | ▬ ▬ | 60.4 | | | | | | | | | | | | | | | | | | | | | | | | | | | | | | | | | | 60.8 | |
| 5 Violent crime | N/A | 7.3 | | | | | | | | | | | | | | | | | | | | | | | | | | | | | | | | | | 10.6 | |
| 6 Long term unemployment | N/A | 5.7 | | | | | | | | | | | | | | | | | | | | | | | | | | | | | | | | | | 9.9 | |
| 7 Smoking status at time of delivery | N/A | * | | | | | | | | | | | | | | | | | | | | | | | | | | | | | | | | | | 12.7 | |
| 8 Breastfeeding initiation | N/A | 73.8 | | | | | | | | | | | | | | | | | | | | | | | | | | | | | | | | | | 73.9 | |
| 9 Obese children (year 6) | ▬ ▬ | 19.2 | | | | | | | | | | | | | | | | | | | | | | | | | | | | | | | | | | 18.9 | |
| 10 Alcohol specific hospital stays <18 | N/A | 41.1 | | | | | | | | | | | | | | | | | | | | | | | | | | | | | | | | | | 44.9 | |
| 11 Under 18 conceptions | N/A | 24.3 | | | | | | | | | | | | | | | | | | | | | | | | | | | | | | | | | | 27.7 | |
| 12 Smoking prevalence | N/A | 19.8 | | | | | | | | | | | | | | | | | | | | | | | | | | | | | | | | | | 19.5 | |
| 13 % of physically active adults | N/A | 58.0 | | | | | | | | | | | | | | | | | | | | | | | | | | | | | | | | | | 56.0 | |
| 14 Obese adults | N/A | 23.4 | | | | | | | | | | | | | | | | | | | | | | | | | | | | | | | | | | 23.0 | |
| 15 Excess weight in adults | N/A | 62.5 | | | | | | | | | | | | | | | | | | | | | | | | | | | | | | | | | | 63.8 | |
| 16 Incidence of malignant melanoma | ▬ ▬ | 13.0 | | | | | | | | | | | | | | | | | | | | | | | | | | | | | | | | | | 14.8 | |
| 17 Hospital stays for self-harm | N/A | 150.7 | | | | | | | | | | | | | | | | | | | | | | | | | | | | | | | | | | 188.0 | |
| 18 Hospital stays for alcohol related harm | N/A | 568 | | | | | | | | | | | | | | | | | | | | | | | | | | | | | | | | | | 637 | |
| 19 Drug misuse | N/A | 5.8 | | | | | | | | | | | | | | | | | | | | | | | | | | | | | | | | | | 8.6 | |
| 20 Recorded diabetes | ▬ ↓ | 5.78 | | | | | | | | | | | | | | | | | | | | | | | | | | | | | | | | | | 6.01 | |
| 21 Incidence of TB | N/A | 3.3 | | | | | | | | | | | | | | | | | | | | | | | | | | | | | | | | | | 15.1 | |
| 22 Acute sexually transmitted infections | N/A | 409 | | | | | | | | | | | | | | | | | | | | | | | | | | | | | | | | | | 804 | |
| 23 Hip fractures in people >65 | N/A | 477.2 | | | | | | | | | | | | | | | | | | | | | | | | | | | | | | | | | | 568.1 | |
| 24 Excess winter deaths | N/A | 16.6 | | | | | | | | | | | | | | | | | | | | | | | | | | | | | | | | | | 16.5 | |
| 25 Life expectancy at birth (male) | ▬ ▬ | 79.8 | | | | | | | | | | | | | | | | | | | | | | | | | | | | | | | | | | 79.2 | |
| 26 Life expectancy at birth (female) | ▬ ▬ | 83.8 | | | | | | | | | | | | | | | | | | | | | | | | | | | | | | | | | | 83.0 | |
| 27 Infant mortality | ▬ ▬ | 3.0 | | | | | | | | | | | | | | | | | | | | | | | | | | | | | | | | | | 4.1 | |
| 28 Smoking related deaths | N/A | 269.0 | | | | | | | | | | | | | | | | | | | | | | | | | | | | | | | | | | 2919 | |
| 29 Suicide rate | N/A | 10.8 | | | | | | | | | | | | | | | | | | | | | | | | | | | | | | | | | | 8.5 | |
| 30 Under 75 mortality rate: CV | N/A | 69.8 | | | | | | | | | | | | | | | | | | | | | | | | | | | | | | | | | | 81.1 | |
| 31 Under 75 mortality rate: cancer | N/A | 133.0 | | | | | | | | | | | | | | | | | | | | | | | | | | | | | | | | | | 146.5 | |
| 32 Killed and seriously injured on roads | ▬ ▬ | 42.5 | | | | | | | | | | | | | | | | | | | | | | | | | | | | | | | | | | 40.5 | |

Solihull

HEALTH PROFILE 2014 – Summary of changes

See technical document for explanation of the purpose of this summary, the tartan rug display and indicator details

KEY: - NO change
 ↑ Improvement
 ↓ Worsening

| Health Profile indicator (see technical document for further details) | | | 2014 | 2013 | 2014 Ratings for Counties / Unitary Authorities in PHE Centre area | | | | | | | | | | | 2014 | | |
|---|-----|---|-------|------|--|--|--|--|--|--|--|--|--|--|--|------|--|-------|
| | ▲ | ■ | | | | | | | | | | | | | | | | |
| 1 Deprivation | N/A | | 16.0 | N/A | | | | | | | | | | | | | | 20.4 |
| 2 Children in poverty | N/A | | 16.7 | N/A | | | | | | | | | | | | | | 20.6 |
| 3 Statutory homelessness | N/A | | 0.5 | N/A | | | | | | | | | | | | | | 2.4 |
| 4 GCSE achieved | - | ↑ | 67.1 | 62.7 | | | | | | | | | | | | | | 60.8 |
| 5 Violent crime | N/A | | 7.9 | N/A | | | | | | | | | | | | | | 10.6 |
| 6 Long term unemployment | N/A | | 8.6 | N/A | | | | | | | | | | | | | | 9.9 |
| 7 Smoking status at time of delivery | N/A | | 12.4 | N/A | | | | | | | | | | | | | | 12.7 |
| 8 Breastfeeding initiation | N/A | | 69.3 | N/A | | | | | | | | | | | | | | 73.9 |
| 9 Obese children (year 6) | - | - | 14.7 | 16.0 | | | | | | | | | | | | | | 18.9 |
| 10 Alcohol specific hospital stays <18 | N/A | | 31.8 | N/A | | | | | | | | | | | | | | 44.9 |
| 11 Under 18 conceptions | N/A | | 23.8 | N/A | | | | | | | | | | | | | | 27.7 |
| 12 Smoking prevalence | N/A | | 12.1 | N/A | | | | | | | | | | | | | | 19.5 |
| 13 % of physically active adults | N/A | | 57.0 | N/A | | | | | | | | | | | | | | 56.0 |
| 14 Obese adults | N/A | | 16.3 | N/A | | | | | | | | | | | | | | 23.0 |
| 15 Excess weight in adults | N/A | | 63.8 | N/A | | | | | | | | | | | | | | 63.8 |
| 16 Incidence of malignant melanoma | ↓ | - | 20.2 | 17.8 | | | | | | | | | | | | | | 14.8 |
| 17 Hospital stays for self-harm | N/A | | 143.5 | N/A | | | | | | | | | | | | | | 188.0 |
| 18 Hospital stays for alcohol related harm | N/A | | 625 | N/A | | | | | | | | | | | | | | 637 |
| 19 Drug misuse | N/A | | 6.9 | N/A | | | | | | | | | | | | | | 8.6 |
| 20 Recorded diabetes | ↓ | ↓ | 6.21 | 5.78 | | | | | | | | | | | | | | 6.01 |
| 21 Incidence of TB | N/A | | 7.7 | N/A | | | | | | | | | | | | | | 15.1 |
| 22 Acute sexually transmitted infections | N/A | | 610 | N/A | | | | | | | | | | | | | | 804 |
| 23 Hip fractures in people >65 | N/A | | 623.4 | N/A | | | | | | | | | | | | | | 568.1 |
| 24 Excess winter deaths | N/A | | 17.4 | N/A | | | | | | | | | | | | | | 16.5 |
| 25 Life expectancy at birth (male) | - | - | 80.7 | 81.0 | | | | | | | | | | | | | | 79.2 |
| 26 Life expectancy at birth (female) | - | - | 84.6 | 84.6 | | | | | | | | | | | | | | 83.0 |
| 27 Infant mortality | - | - | 3.2 | 2.8 | | | | | | | | | | | | | | 4.1 |
| 28 Smoking related deaths | N/A | | 244.8 | N/A | | | | | | | | | | | | | | 2919 |
| 29 Suicide rate | N/A | | 4.9 | N/A | | | | | | | | | | | | | | 8.5 |
| 30 Under 75 mortality rate: CV | N/A | | 66.6 | N/A | | | | | | | | | | | | | | 81.1 |
| 31 Under 75 mortality rate: cancer | N/A | | 147.7 | N/A | | | | | | | | | | | | | | 146.5 |
| 32 Killed and seriously injured on roads | - | - | 30.3 | 34.7 | | | | | | | | | | | | | | 40.5 |

Staffordshire

HEALTH PROFILE 2014 – Summary of changes

See technical document for explanation of the purpose of this summary, the tartan rug display and indicator details

KEY: ■ NO change
 ↑ Improvement
 ↓ Worsening

| Health Profile indicator (see technical document for further details) | | | 2014 | 2013 | 2014 Ratings for Counties / Unitary Authorities in PHE Centre area | | | | | | | | | | | | | 2014 | | | | | | | | | | | | | | | | | | | |
|---|--------|-------|------|------|--|---|---|---|---|---|---|---|---|----|----|----|----|------|----|----|----|----|----|----|----|----|----|----|----|----|----|----|----|----|----|----|--|
| | Change | Value | | | 1 | 2 | 3 | 4 | 5 | 6 | 7 | 8 | 9 | 10 | 11 | 12 | 13 | 14 | 15 | 16 | 17 | 18 | 19 | 20 | 21 | 22 | 23 | 24 | 25 | 26 | 27 | 28 | 29 | 30 | 31 | 32 | |
| 1 Deprivation | N/A | 9.3 | | N/A | | | | | | | | | | | | | | | | | | | | | | | | | | | | | | | | | |
| 2 Children in poverty | N/A | 15.4 | | N/A | | | | | | | | | | | | | | | | | | | | | | | | | | | | | | | | | |
| 3 Statutory homelessness | N/A | 0.2 | | N/A | | | | | | | | | | | | | | | | | | | | | | | | | | | | | | | | | |
| 4 GCSE achieved | ↓ | 59.8 | - | 58.7 | | | | | | | | | | | | | | | | | | | | | | | | | | | | | | | | | |
| 5 Violent crime | N/A | 9.4 | | N/A | | | | | | | | | | | | | | | | | | | | | | | | | | | | | | | | | |
| 6 Long term unemployment | N/A | 5.4 | | N/A | | | | | | | | | | | | | | | | | | | | | | | | | | | | | | | | | |
| 7 Smoking status at time of delivery | N/A | 15.2 | | N/A | | | | | | | | | | | | | | | | | | | | | | | | | | | | | | | | | |
| 8 Breastfeeding initiation | N/A | 68.5 | | N/A | | | | | | | | | | | | | | | | | | | | | | | | | | | | | | | | | |
| 9 Obese children (year 6) | ■ | 18.4 | | 19.5 | | | | | | | | | | | | | | | | | | | | | | | | | | | | | | | | | |
| 10 Alcohol specific hospital stays <18 | N/A | 54.7 | | N/A | | | | | | | | | | | | | | | | | | | | | | | | | | | | | | | | | |
| 11 Under 18 conceptions | N/A | 28.9 | | N/A | | | | | | | | | | | | | | | | | | | | | | | | | | | | | | | | | |
| 12 Smoking prevalence | N/A | 17.0 | | N/A | | | | | | | | | | | | | | | | | | | | | | | | | | | | | | | | | |
| 13 % of physically active adults | N/A | 55.9 | | N/A | | | | | | | | | | | | | | | | | | | | | | | | | | | | | | | | | |
| 14 Obese adults | N/A | 24.4 | | N/A | | | | | | | | | | | | | | | | | | | | | | | | | | | | | | | | | |
| 15 Excess weight in adults | N/A | 67.9 | | N/A | | | | | | | | | | | | | | | | | | | | | | | | | | | | | | | | | |
| 16 Incidence of malignant melanoma | ■ | 15.3 | | 13.1 | | | | | | | | | | | | | | | | | | | | | | | | | | | | | | | | | |
| 17 Hospital stays for self-harm | N/A | 187.4 | | N/A | | | | | | | | | | | | | | | | | | | | | | | | | | | | | | | | | |
| 18 Hospital stays for alcohol related harm | N/A | 703 | | N/A | | | | | | | | | | | | | | | | | | | | | | | | | | | | | | | | | |
| 19 Drug misuse | N/A | 5.5 | | N/A | | | | | | | | | | | | | | | | | | | | | | | | | | | | | | | | | |
| 20 Recorded diabetes | ■ | 6.39 | | 6.09 | | | | | | | | | | | | | | | | | | | | | | | | | | | | | | | | | |
| 21 Incidence of TB | N/A | 4.4 | | N/A | | | | | | | | | | | | | | | | | | | | | | | | | | | | | | | | | |
| 22 Acute sexually transmitted infections | N/A | 551 | | N/A | | | | | | | | | | | | | | | | | | | | | | | | | | | | | | | | | |
| 23 Hip fractures in people >65 | N/A | 613.4 | | N/A | | | | | | | | | | | | | | | | | | | | | | | | | | | | | | | | | |
| 24 Excess winter deaths | N/A | 13.9 | | N/A | | | | | | | | | | | | | | | | | | | | | | | | | | | | | | | | | |
| 25 Life expectancy at birth (male) | ■ | 79.4 | | 79.0 | | | | | | | | | | | | | | | | | | | | | | | | | | | | | | | | | |
| 26 Life expectancy at birth (female) | ■ | 83.0 | | 82.9 | | | | | | | | | | | | | | | | | | | | | | | | | | | | | | | | | |
| 27 Infant mortality | ■ | 4.9 | | 5.1 | | | | | | | | | | | | | | | | | | | | | | | | | | | | | | | | | |
| 28 Smoking related deaths | N/A | 2711 | | N/A | | | | | | | | | | | | | | | | | | | | | | | | | | | | | | | | | |
| 29 Suicide rate | N/A | 8.4 | | N/A | | | | | | | | | | | | | | | | | | | | | | | | | | | | | | | | | |
| 30 Under 75 mortality rate: CV | N/A | 72.9 | | N/A | | | | | | | | | | | | | | | | | | | | | | | | | | | | | | | | | |
| 31 Under 75 mortality rate: cancer | N/A | 140.5 | | N/A | | | | | | | | | | | | | | | | | | | | | | | | | | | | | | | | | |
| 32 Killed and seriously injured on roads | ■ | 25.0 | | 26.7 | | | | | | | | | | | | | | | | | | | | | | | | | | | | | | | | | |

Stoke-on-Trent

HEALTH PROFILE 2014 – Summary of changes

See technical document for explanation of the purpose of this summary, the tartan rug display and indicator details

| Health Profile indicator (see technical document for further details) | | 2014 | | 2013 | | 2014 Ratings for Counties / Unitary Authorities in PHE Centre area | | | | | | | | | | | | | | | | 2014 | | | | | | | | | | | | | | | | |
|---|---|-------|--------|-------|--------|--|---|---|---|---|---|---|---|---|----|----|----|----|----|----|----|------|----|----|----|----|----|----|----|----|----|----|----|----|----|----|-------|------|
| | | Value | Change | Value | Change | 1 | 2 | 3 | 4 | 5 | 6 | 7 | 8 | 9 | 10 | 11 | 12 | 13 | 14 | 15 | 16 | 17 | 18 | 19 | 20 | 21 | 22 | 23 | 24 | 25 | 26 | 27 | 28 | 29 | 30 | 31 | 32 | |
| 1 | Deprivation | N/A | | 52.4 | | N/A | | | | | | | | | | | | | | | | | | | | | | | | | | | | | | | | 20.4 |
| 2 | Children in poverty | N/A | | 27.5 | | N/A | | | | | | | | | | | | | | | | | | | | | | | | | | | | | | | | 20.6 |
| 3 | Statutory homelessness | N/A | | 0.2 | | N/A | | | | | | | | | | | | | | | | | | | | | | | | | | | | | | | | 2.4 |
| 4 | GCSE achieved | ■ | ■ | 50.1 | | 51.8 | | | | | | | | | | | | | | | | | | | | | | | | | | | | | | | 60.8 | |
| 5 | Violent crime | N/A | | 20.0 | | N/A | | | | | | | | | | | | | | | | | | | | | | | | | | | | | | | 10.6 | |
| 6 | Long term unemployment | N/A | | 11.4 | | N/A | | | | | | | | | | | | | | | | | | | | | | | | | | | | | | | 9.9 | |
| 7 | Smoking status at time of delivery | N/A | | 21.1 | | N/A | | | | | | | | | | | | | | | | | | | | | | | | | | | | | | | 12.7 | |
| 8 | Breastfeeding initiation | N/A | | 62.8 | | N/A | | | | | | | | | | | | | | | | | | | | | | | | | | | | | | | 73.9 | |
| 9 | Obese children (year 6) | ■ | ■ | 22.5 | | 24.0 | | | | | | | | | | | | | | | | | | | | | | | | | | | | | | | 18.9 | |
| 10 | Alcohol specific hospital stays <18 | N/A | | 42.8 | | N/A | | | | | | | | | | | | | | | | | | | | | | | | | | | | | | | 44.9 | |
| 11 | Under 18 conceptions | N/A | | 51.3 | | N/A | | | | | | | | | | | | | | | | | | | | | | | | | | | | | | | 27.7 | |
| 12 | Smoking prevalence | N/A | | 28.0 | | N/A | | | | | | | | | | | | | | | | | | | | | | | | | | | | | | | 19.5 | |
| 13 | % of physically active adults | N/A | | 50.2 | | N/A | | | | | | | | | | | | | | | | | | | | | | | | | | | | | | | 56.0 | |
| 14 | Obese adults | N/A | | 26.8 | | N/A | | | | | | | | | | | | | | | | | | | | | | | | | | | | | | | 23.0 | |
| 15 | Excess weight in adults | N/A | | 66.5 | | N/A | | | | | | | | | | | | | | | | | | | | | | | | | | | | | | | 63.8 | |
| 16 | Incidence of malignant melanoma | ■ | ■ | 13.1 | | 14.3 | | | | | | | | | | | | | | | | | | | | | | | | | | | | | | | 14.8 | |
| 17 | Hospital stays for self-harm | N/A | | 334.1 | | N/A | | | | | | | | | | | | | | | | | | | | | | | | | | | | | | | 188.0 | |
| 18 | Hospital stays for alcohol related harm | N/A | | 996 | | N/A | | | | | | | | | | | | | | | | | | | | | | | | | | | | | | | 637 | |
| 19 | Drug misuse | N/A | | 13.6 | | N/A | | | | | | | | | | | | | | | | | | | | | | | | | | | | | | | 8.6 | |
| 20 | Recorded diabetes | ■ | ■ | 7.16 | | 6.98 | | | | | | | | | | | | | | | | | | | | | | | | | | | | | | | 6.01 | |
| 21 | Incidence of TB | N/A | | 15.7 | | N/A | | | | | | | | | | | | | | | | | | | | | | | | | | | | | | | 15.1 | |
| 22 | Acute sexually transmitted infections | N/A | | 547 | | N/A | | | | | | | | | | | | | | | | | | | | | | | | | | | | | | | 804 | |
| 23 | Hip fractures in people >65 | N/A | | 695.8 | | N/A | | | | | | | | | | | | | | | | | | | | | | | | | | | | | | | 568.1 | |
| 24 | Excess winter deaths | N/A | | 14.7 | | N/A | | | | | | | | | | | | | | | | | | | | | | | | | | | | | | | 16.5 | |
| 25 | Life expectancy at birth (male) | ■ | ■ | 76.7 | | 76.5 | | | | | | | | | | | | | | | | | | | | | | | | | | | | | | | 79.2 | |
| 26 | Life expectancy at birth (female) | ■ | ■ | 80.5 | | 80.5 | | | | | | | | | | | | | | | | | | | | | | | | | | | | | | | | 83.0 |
| 27 | Infant mortality | ■ | ■ | 6.9 | | 7.3 | | | | | | | | | | | | | | | | | | | | | | | | | | | | | | | 4.1 | |
| 28 | Smoking related deaths | N/A | | 422.1 | | N/A | | | | | | | | | | | | | | | | | | | | | | | | | | | | | | | 2919 | |
| 29 | Suicide rate | N/A | | 119 | | N/A | | | | | | | | | | | | | | | | | | | | | | | | | | | | | | | 8.5 | |
| 30 | Under 75 mortality rate: CV | N/A | | 104.1 | | N/A | | | | | | | | | | | | | | | | | | | | | | | | | | | | | | | 81.1 | |
| 31 | Under 75 mortality rate: cancer | N/A | | 177.6 | | N/A | | | | | | | | | | | | | | | | | | | | | | | | | | | | | | | 146.5 | |
| 32 | Killed and seriously injured on roads | ■ | ■ | 21.6 | | 22.8 | | | | | | | | | | | | | | | | | | | | | | | | | | | | | | | 40.5 | |

Telford and Wrekin

HEALTH PROFILE 2014 – Summary of changes

See technical document for explanation of the purpose of this summary, the tartan rug display and indicator details

KEY: ■ NO change
 ▲ Improvement
 ▼ Worsening

| Health Profile indicator (see technical document for further details) | | 2014 | | 2013 | | 2014 Ratings for Counties / Unitary Authorities in PHE Centre area | | | | | | | | | | | | | | | | 2014 | | | | | | | | | | | | | | | |
|---|--|-------|--------|-------|--------|--|---|---|---|---|---|---|---|---|----|----|----|----|----|----|----|------|----|----|----|----|----|----|----|----|----|----|----|------|-------|------|------|
| | | Value | Change | Value | Change | 1 | 2 | 3 | 4 | 5 | 6 | 7 | 8 | 9 | 10 | 11 | 12 | 13 | 14 | 15 | 16 | 17 | 18 | 19 | 20 | 21 | 22 | 23 | 24 | 25 | 26 | 27 | 28 | 29 | 30 | 31 | 32 |
| ■ | 1 Deprivation | N/A | | 23.6 | | N/A | ■ | ■ | ■ | ■ | ■ | ■ | ■ | ■ | ■ | ■ | ■ | ■ | ■ | ■ | ■ | ■ | ■ | ■ | ■ | ■ | ■ | ■ | ■ | ■ | ■ | ■ | ■ | ■ | ■ | ■ | 20.4 |
| | 2 Children in poverty | N/A | | 25.1 | | N/A | ■ | ■ | ■ | ■ | ■ | ■ | ■ | ■ | ■ | ■ | ■ | ■ | ■ | ■ | ■ | ■ | ■ | ■ | ■ | ■ | ■ | ■ | ■ | ■ | ■ | ■ | ■ | ■ | ■ | 20.6 | |
| | 3 Statutory homelessness | N/A | | 0.8 | | N/A | ■ | ■ | ■ | ■ | ■ | ■ | ■ | ■ | ■ | ■ | ■ | ■ | ■ | ■ | ■ | ■ | ■ | ■ | ■ | ■ | ■ | ■ | ■ | ■ | ■ | ■ | ■ | ■ | ■ | 2.4 | |
| ■ | 4 GCSE achieved | ▼ | ■ | 58.6 | ■ | 61.3 | ■ | ■ | ■ | ■ | ■ | ■ | ■ | ■ | ■ | ■ | ■ | ■ | ■ | ■ | ■ | ■ | ■ | ■ | ■ | ■ | ■ | ■ | ■ | ■ | ■ | ■ | ■ | ■ | 60.8 | | |
| | 5 Violent crime | N/A | | 10.4 | | N/A | ■ | ■ | ■ | ■ | ■ | ■ | ■ | ■ | ■ | ■ | ■ | ■ | ■ | ■ | ■ | ■ | ■ | ■ | ■ | ■ | ■ | ■ | ■ | ■ | ■ | ■ | ■ | ■ | 10.6 | | |
| | 6 Long term unemployment | N/A | | 10.4 | | N/A | ■ | ■ | ■ | ■ | ■ | ■ | ■ | ■ | ■ | ■ | ■ | ■ | ■ | ■ | ■ | ■ | ■ | ■ | ■ | ■ | ■ | ■ | ■ | ■ | ■ | ■ | ■ | ■ | 9.9 | | |
| ■ | 7 Smoking status at time of delivery | N/A | | 22.4 | | N/A | ■ | ■ | ■ | ■ | ■ | ■ | ■ | ■ | ■ | ■ | ■ | ■ | ■ | ■ | ■ | ■ | ■ | ■ | ■ | ■ | ■ | ■ | ■ | ■ | ■ | ■ | ■ | ■ | 12.7 | | |
| | 8 Breastfeeding initiation | N/A | | 65.1 | | N/A | ■ | ■ | ■ | ■ | ■ | ■ | ■ | ■ | ■ | ■ | ■ | ■ | ■ | ■ | ■ | ■ | ■ | ■ | ■ | ■ | ■ | ■ | ■ | ■ | ■ | ■ | ■ | ■ | 73.9 | | |
| | 9 Obese children (year 6) | ■ | ■ | 20.0 | ■ | 20.6 | ■ | ■ | ■ | ■ | ■ | ■ | ■ | ■ | ■ | ■ | ■ | ■ | ■ | ■ | ■ | ■ | ■ | ■ | ■ | ■ | ■ | ■ | ■ | ■ | ■ | ■ | ■ | 18.9 | | | |
| ■ | 10 Alcohol specific hospital stays <18 | N/A | | 36.9 | | N/A | ■ | ■ | ■ | ■ | ■ | ■ | ■ | ■ | ■ | ■ | ■ | ■ | ■ | ■ | ■ | ■ | ■ | ■ | ■ | ■ | ■ | ■ | ■ | ■ | ■ | ■ | ■ | ■ | 44.9 | | |
| | 11 Under 18 conceptions | N/A | | 36.8 | | N/A | ■ | ■ | ■ | ■ | ■ | ■ | ■ | ■ | ■ | ■ | ■ | ■ | ■ | ■ | ■ | ■ | ■ | ■ | ■ | ■ | ■ | ■ | ■ | ■ | ■ | ■ | ■ | ■ | 27.7 | | |
| | 12 Smoking prevalence | N/A | | 22.8 | | N/A | ■ | ■ | ■ | ■ | ■ | ■ | ■ | ■ | ■ | ■ | ■ | ■ | ■ | ■ | ■ | ■ | ■ | ■ | ■ | ■ | ■ | ■ | ■ | ■ | ■ | ■ | ■ | ■ | 19.5 | | |
| ■ | 13 % of physically active adults | N/A | | 51.5 | | N/A | ■ | ■ | ■ | ■ | ■ | ■ | ■ | ■ | ■ | ■ | ■ | ■ | ■ | ■ | ■ | ■ | ■ | ■ | ■ | ■ | ■ | ■ | ■ | ■ | ■ | ■ | ■ | ■ | 56.0 | | |
| | 14 Obese adults | N/A | | 32.3 | | N/A | ■ | ■ | ■ | ■ | ■ | ■ | ■ | ■ | ■ | ■ | ■ | ■ | ■ | ■ | ■ | ■ | ■ | ■ | ■ | ■ | ■ | ■ | ■ | ■ | ■ | ■ | ■ | ■ | 23.0 | | |
| | 15 Excess weight in adults | N/A | | 70.2 | | N/A | ■ | ■ | ■ | ■ | ■ | ■ | ■ | ■ | ■ | ■ | ■ | ■ | ■ | ■ | ■ | ■ | ■ | ■ | ■ | ■ | ■ | ■ | ■ | ■ | ■ | ■ | ■ | ■ | 63.8 | | |
| ■ | 16 Incidence of malignant melanoma | ■ | ■ | 12.4 | ■ | 13.1 | ■ | ■ | ■ | ■ | ■ | ■ | ■ | ■ | ■ | ■ | ■ | ■ | ■ | ■ | ■ | ■ | ■ | ■ | ■ | ■ | ■ | ■ | ■ | ■ | ■ | ■ | ■ | 14.8 | | | |
| | 17 Hospital stays for self-harm | N/A | | 232.9 | | N/A | ■ | ■ | ■ | ■ | ■ | ■ | ■ | ■ | ■ | ■ | ■ | ■ | ■ | ■ | ■ | ■ | ■ | ■ | ■ | ■ | ■ | ■ | ■ | ■ | ■ | ■ | ■ | ■ | 188.0 | | |
| | 18 Hospital stays for alcohol related harm | N/A | | 633 | | N/A | ■ | ■ | ■ | ■ | ■ | ■ | ■ | ■ | ■ | ■ | ■ | ■ | ■ | ■ | ■ | ■ | ■ | ■ | ■ | ■ | ■ | ■ | ■ | ■ | ■ | ■ | ■ | ■ | 637 | | |
| | 19 Drug misuse | N/A | | 9.3 | | N/A | ■ | ■ | ■ | ■ | ■ | ■ | ■ | ■ | ■ | ■ | ■ | ■ | ■ | ■ | ■ | ■ | ■ | ■ | ■ | ■ | ■ | ■ | ■ | ■ | ■ | ■ | ■ | ■ | 8.6 | | |
| | 20 Recorded diabetes | ■ | ■ | 6.33 | ■ | 6.08 | ■ | ■ | ■ | ■ | ■ | ■ | ■ | ■ | ■ | ■ | ■ | ■ | ■ | ■ | ■ | ■ | ■ | ■ | ■ | ■ | ■ | ■ | ■ | ■ | ■ | ■ | ■ | ■ | 6.01 | | |
| | 21 Incidence of TB | N/A | | 6.0 | | N/A | ■ | ■ | ■ | ■ | ■ | ■ | ■ | ■ | ■ | ■ | ■ | ■ | ■ | ■ | ■ | ■ | ■ | ■ | ■ | ■ | ■ | ■ | ■ | ■ | ■ | ■ | ■ | ■ | 15.1 | | |
| ■ | 22 Acute sexually transmitted infections | N/A | | 533 | | N/A | ■ | ■ | ■ | ■ | ■ | ■ | ■ | ■ | ■ | ■ | ■ | ■ | ■ | ■ | ■ | ■ | ■ | ■ | ■ | ■ | ■ | ■ | ■ | ■ | ■ | ■ | ■ | ■ | 804 | | |
| | 23 Hip fractures in people >65 | N/A | | 6710 | | N/A | ■ | ■ | ■ | ■ | ■ | ■ | ■ | ■ | ■ | ■ | ■ | ■ | ■ | ■ | ■ | ■ | ■ | ■ | ■ | ■ | ■ | ■ | ■ | ■ | ■ | ■ | ■ | ■ | 568.1 | | |
| | 24 Excess winter deaths | N/A | | 15.4 | | N/A | ■ | ■ | ■ | ■ | ■ | ■ | ■ | ■ | ■ | ■ | ■ | ■ | ■ | ■ | ■ | ■ | ■ | ■ | ■ | ■ | ■ | ■ | ■ | ■ | ■ | ■ | ■ | ■ | 16.5 | | |
| ■ | 25 Life expectancy at birth (male) | ■ | ■ | 77.9 | ■ | 77.4 | ■ | ■ | ■ | ■ | ■ | ■ | ■ | ■ | ■ | ■ | ■ | ■ | ■ | ■ | ■ | ■ | ■ | ■ | ■ | ■ | ■ | ■ | ■ | ■ | ■ | ■ | ■ | 79.2 | | | |
| | 26 Life expectancy at birth (female) | ■ | ■ | 81.6 | ■ | 82.0 | ■ | ■ | ■ | ■ | ■ | ■ | ■ | ■ | ■ | ■ | ■ | ■ | ■ | ■ | ■ | ■ | ■ | ■ | ■ | ■ | ■ | ■ | ■ | ■ | ■ | ■ | ■ | 83.0 | | | |
| | 27 Infant mortality | ■ | ■ | 5.5 | ■ | 5.1 | ■ | ■ | ■ | ■ | ■ | ■ | ■ | ■ | ■ | ■ | ■ | ■ | ■ | ■ | ■ | ■ | ■ | ■ | ■ | ■ | ■ | ■ | ■ | ■ | ■ | ■ | ■ | 4.1 | | | |
| | 28 Smoking related deaths | N/A | | 349.3 | | N/A | ■ | ■ | ■ | ■ | ■ | ■ | ■ | ■ | ■ | ■ | ■ | ■ | ■ | ■ | ■ | ■ | ■ | ■ | ■ | ■ | ■ | ■ | ■ | ■ | ■ | ■ | ■ | ■ | 2919 | | |
| | 29 Suicide rate | N/A | | 10.6 | | N/A | ■ | ■ | ■ | ■ | ■ | ■ | ■ | ■ | ■ | ■ | ■ | ■ | ■ | ■ | ■ | ■ | ■ | ■ | ■ | ■ | ■ | ■ | ■ | ■ | ■ | ■ | ■ | 8.5 | | | |
| | 30 Under 75 mortality rate: CV | N/A | | 95.6 | | N/A | ■ | ■ | ■ | ■ | ■ | ■ | ■ | ■ | ■ | ■ | ■ | ■ | ■ | ■ | ■ | ■ | ■ | ■ | ■ | ■ | ■ | ■ | ■ | ■ | ■ | ■ | ■ | 81.1 | | | |
| | 31 Under 75 mortality rate: cancer | N/A | | 166.6 | | N/A | ■ | ■ | ■ | ■ | ■ | ■ | ■ | ■ | ■ | ■ | ■ | ■ | ■ | ■ | ■ | ■ | ■ | ■ | ■ | ■ | ■ | ■ | ■ | ■ | ■ | ■ | ■ | ■ | 146.5 | | |
| | 32 Killed and seriously injured on roads | ■ | ■ | 23.2 | ■ | 29.2 | ■ | ■ | ■ | ■ | ■ | ■ | ■ | ■ | ■ | ■ | ■ | ■ | ■ | ■ | ■ | ■ | ■ | ■ | ■ | ■ | ■ | ■ | ■ | ■ | ■ | ■ | ■ | 40.5 | | | |

Walsall

HEALTH PROFILE 2014 – Summary of changes

See technical document for explanation of the purpose of this summary, the tartan rug display and indicator details

KEY: ■ NO change
 ▲ Improvement
 ▼ Worsening

| Health Profile indicator (see technical document for further details) | | 2014 | | 2013 | | 2014 Ratings for Counties / Unitary Authorities in PHE Centre area | | | | | | | | | | | | | | | | 2014 | | | | | | | | | | | | | | | |
|---|--|-------|--------|-------|--------|--|---|---|---|---|---|---|---|---|----|----|----|----|----|----|----|------|----|----|----|----|----|----|----|----|----|----|----|----|-------|-------|------|
| | | Value | Change | Value | Change | 1 | 2 | 3 | 4 | 5 | 6 | 7 | 8 | 9 | 10 | 11 | 12 | 13 | 14 | 15 | 16 | 17 | 18 | 19 | 20 | 21 | 22 | 23 | 24 | 25 | 26 | 27 | 28 | 29 | 30 | 31 | 32 |
| ■ | 1 Deprivation | N/A | 45.7 | ■ | N/A | ■ | ■ | ■ | ■ | ■ | ■ | ■ | ■ | ■ | ■ | ■ | ■ | ■ | ■ | ■ | ■ | ■ | ■ | ■ | ■ | ■ | ■ | ■ | ■ | ■ | ■ | ■ | ■ | ■ | ■ | ■ | 20.4 |
| | 2 Children in poverty | N/A | 29.2 | ■ | N/A | ■ | ■ | ■ | ■ | ■ | ■ | ■ | ■ | ■ | ■ | ■ | ■ | ■ | ■ | ■ | ■ | ■ | ■ | ■ | ■ | ■ | ■ | ■ | ■ | ■ | ■ | ■ | ■ | ■ | ■ | 20.6 | |
| | 3 Statutory homelessness | N/A | 0.4 | ■ | N/A | ■ | ■ | ■ | ■ | ■ | ■ | ■ | ■ | ■ | ■ | ■ | ■ | ■ | ■ | ■ | ■ | ■ | ■ | ■ | ■ | ■ | ■ | ■ | ■ | ■ | ■ | ■ | ■ | ■ | ■ | 2.4 | |
| | 4 GCSE achieved | ■ | ■ | 58.7 | ■ | 56.4 | ■ | ■ | ■ | ■ | ■ | ■ | ■ | ■ | ■ | ■ | ■ | ■ | ■ | ■ | ■ | ■ | ■ | ■ | ■ | ■ | ■ | ■ | ■ | ■ | ■ | ■ | ■ | ■ | ■ | 60.8 | |
| | 5 Violent crime | N/A | 9.4 | ■ | N/A | ■ | ■ | ■ | ■ | ■ | ■ | ■ | ■ | ■ | ■ | ■ | ■ | ■ | ■ | ■ | ■ | ■ | ■ | ■ | ■ | ■ | ■ | ■ | ■ | ■ | ■ | ■ | ■ | ■ | ■ | 10.6 | |
| | 6 Long term unemployment | N/A | 20.0 | ■ | N/A | ■ | ■ | ■ | ■ | ■ | ■ | ■ | ■ | ■ | ■ | ■ | ■ | ■ | ■ | ■ | ■ | ■ | ■ | ■ | ■ | ■ | ■ | ■ | ■ | ■ | ■ | ■ | ■ | ■ | ■ | 9.9 | |
| ■ | 7 Smoking status at time of delivery | N/A | 15.7 | ■ | N/A | ■ | ■ | ■ | ■ | ■ | ■ | ■ | ■ | ■ | ■ | ■ | ■ | ■ | ■ | ■ | ■ | ■ | ■ | ■ | ■ | ■ | ■ | ■ | ■ | ■ | ■ | ■ | ■ | ■ | 12.7 | | |
| | 8 Breastfeeding initiation | N/A | 63.3 | ■ | N/A | ■ | ■ | ■ | ■ | ■ | ■ | ■ | ■ | ■ | ■ | ■ | ■ | ■ | ■ | ■ | ■ | ■ | ■ | ■ | ■ | ■ | ■ | ■ | ■ | ■ | ■ | ■ | ■ | ■ | 73.9 | | |
| | 9 Obese children (year 6) | ■ | ■ | 22.8 | ■ | 23.2 | ■ | ■ | ■ | ■ | ■ | ■ | ■ | ■ | ■ | ■ | ■ | ■ | ■ | ■ | ■ | ■ | ■ | ■ | ■ | ■ | ■ | ■ | ■ | ■ | ■ | ■ | ■ | ■ | 18.9 | | |
| ■ | 10 Alcohol specific hospital stays <18 | N/A | 58.0 | ■ | N/A | ■ | ■ | ■ | ■ | ■ | ■ | ■ | ■ | ■ | ■ | ■ | ■ | ■ | ■ | ■ | ■ | ■ | ■ | ■ | ■ | ■ | ■ | ■ | ■ | ■ | ■ | ■ | ■ | ■ | 44.9 | | |
| | 11 Under 18 conceptions | N/A | 46.9 | ■ | N/A | ■ | ■ | ■ | ■ | ■ | ■ | ■ | ■ | ■ | ■ | ■ | ■ | ■ | ■ | ■ | ■ | ■ | ■ | ■ | ■ | ■ | ■ | ■ | ■ | ■ | ■ | ■ | ■ | ■ | 27.7 | | |
| | 12 Smoking prevalence | N/A | 23.6 | ■ | N/A | ■ | ■ | ■ | ■ | ■ | ■ | ■ | ■ | ■ | ■ | ■ | ■ | ■ | ■ | ■ | ■ | ■ | ■ | ■ | ■ | ■ | ■ | ■ | ■ | ■ | ■ | ■ | ■ | ■ | 19.5 | | |
| | 13 % of physically active adults | N/A | 50.5 | ■ | N/A | ■ | ■ | ■ | ■ | ■ | ■ | ■ | ■ | ■ | ■ | ■ | ■ | ■ | ■ | ■ | ■ | ■ | ■ | ■ | ■ | ■ | ■ | ■ | ■ | ■ | ■ | ■ | ■ | ■ | 56.0 | | |
| | 14 Obese adults | N/A | 30.4 | ■ | N/A | ■ | ■ | ■ | ■ | ■ | ■ | ■ | ■ | ■ | ■ | ■ | ■ | ■ | ■ | ■ | ■ | ■ | ■ | ■ | ■ | ■ | ■ | ■ | ■ | ■ | ■ | ■ | ■ | ■ | ■ | 23.0 | |
| ■ | 15 Excess weight in adults | N/A | 68.9 | ■ | N/A | ■ | ■ | ■ | ■ | ■ | ■ | ■ | ■ | ■ | ■ | ■ | ■ | ■ | ■ | ■ | ■ | ■ | ■ | ■ | ■ | ■ | ■ | ■ | ■ | ■ | ■ | ■ | ■ | ■ | 63.8 | | |
| | 16 Incidence of malignant melanoma | ■ | ■ | 9.6 | ■ | 8.3 | ■ | ■ | ■ | ■ | ■ | ■ | ■ | ■ | ■ | ■ | ■ | ■ | ■ | ■ | ■ | ■ | ■ | ■ | ■ | ■ | ■ | ■ | ■ | ■ | ■ | ■ | ■ | ■ | 14.8 | | |
| | 17 Hospital stays for self-harm | N/A | 1712 | ■ | N/A | ■ | ■ | ■ | ■ | ■ | ■ | ■ | ■ | ■ | ■ | ■ | ■ | ■ | ■ | ■ | ■ | ■ | ■ | ■ | ■ | ■ | ■ | ■ | ■ | ■ | ■ | ■ | ■ | ■ | 188.0 | | |
| | 18 Hospital stays for alcohol related harm | N/A | 664 | ■ | N/A | ■ | ■ | ■ | ■ | ■ | ■ | ■ | ■ | ■ | ■ | ■ | ■ | ■ | ■ | ■ | ■ | ■ | ■ | ■ | ■ | ■ | ■ | ■ | ■ | ■ | ■ | ■ | ■ | ■ | 637 | | |
| | 19 Drug misuse | N/A | 12.4 | ■ | N/A | ■ | ■ | ■ | ■ | ■ | ■ | ■ | ■ | ■ | ■ | ■ | ■ | ■ | ■ | ■ | ■ | ■ | ■ | ■ | ■ | ■ | ■ | ■ | ■ | ■ | ■ | ■ | ■ | ■ | 8.6 | | |
| | 20 Recorded diabetes | ■ | ■ | 8.25 | ■ | 8.02 | ■ | ■ | ■ | ■ | ■ | ■ | ■ | ■ | ■ | ■ | ■ | ■ | ■ | ■ | ■ | ■ | ■ | ■ | ■ | ■ | ■ | ■ | ■ | ■ | ■ | ■ | ■ | ■ | 6.01 | | |
| | 21 Incidence of TB | N/A | 20.4 | ■ | N/A | ■ | ■ | ■ | ■ | ■ | ■ | ■ | ■ | ■ | ■ | ■ | ■ | ■ | ■ | ■ | ■ | ■ | ■ | ■ | ■ | ■ | ■ | ■ | ■ | ■ | ■ | ■ | ■ | ■ | 15.1 | | |
| | 22 Acute sexually transmitted infections | N/A | 1152 | ■ | N/A | ■ | ■ | ■ | ■ | ■ | ■ | ■ | ■ | ■ | ■ | ■ | ■ | ■ | ■ | ■ | ■ | ■ | ■ | ■ | ■ | ■ | ■ | ■ | ■ | ■ | ■ | ■ | ■ | ■ | ■ | 804 | |
| | 23 Hip fractures in people >65 | N/A | 5710 | ■ | N/A | ■ | ■ | ■ | ■ | ■ | ■ | ■ | ■ | ■ | ■ | ■ | ■ | ■ | ■ | ■ | ■ | ■ | ■ | ■ | ■ | ■ | ■ | ■ | ■ | ■ | ■ | ■ | ■ | ■ | ■ | 568.1 | |
| | 24 Excess winter deaths | N/A | 20.3 | ■ | N/A | ■ | ■ | ■ | ■ | ■ | ■ | ■ | ■ | ■ | ■ | ■ | ■ | ■ | ■ | ■ | ■ | ■ | ■ | ■ | ■ | ■ | ■ | ■ | ■ | ■ | ■ | ■ | ■ | ■ | ■ | 16.5 | |
| ■ | 25 Life expectancy at birth (male) | ■ | ■ | 77.9 | ■ | 77.3 | ■ | ■ | ■ | ■ | ■ | ■ | ■ | ■ | ■ | ■ | ■ | ■ | ■ | ■ | ■ | ■ | ■ | ■ | ■ | ■ | ■ | ■ | ■ | ■ | ■ | ■ | ■ | ■ | 79.2 | | |
| | 26 Life expectancy at birth (female) | ■ | ■ | 82.3 | ■ | 82.3 | ■ | ■ | ■ | ■ | ■ | ■ | ■ | ■ | ■ | ■ | ■ | ■ | ■ | ■ | ■ | ■ | ■ | ■ | ■ | ■ | ■ | ■ | ■ | ■ | ■ | ■ | ■ | ■ | 83.0 | | |
| | 27 Infant mortality | ■ | ■ | 7.2 | ■ | 8.0 | ■ | ■ | ■ | ■ | ■ | ■ | ■ | ■ | ■ | ■ | ■ | ■ | ■ | ■ | ■ | ■ | ■ | ■ | ■ | ■ | ■ | ■ | ■ | ■ | ■ | ■ | ■ | ■ | 4.1 | | |
| | 28 Smoking related deaths | N/A | 318.1 | ■ | N/A | ■ | ■ | ■ | ■ | ■ | ■ | ■ | ■ | ■ | ■ | ■ | ■ | ■ | ■ | ■ | ■ | ■ | ■ | ■ | ■ | ■ | ■ | ■ | ■ | ■ | ■ | ■ | ■ | ■ | ■ | 2919 | |
| | 29 Suicide rate | N/A | 5.8 | ■ | N/A | ■ | ■ | ■ | ■ | ■ | ■ | ■ | ■ | ■ | ■ | ■ | ■ | ■ | ■ | ■ | ■ | ■ | ■ | ■ | ■ | ■ | ■ | ■ | ■ | ■ | ■ | ■ | ■ | ■ | 8.5 | | |
| | 30 Under 75 mortality rate: CV | N/A | 94.8 | ■ | N/A | ■ | ■ | ■ | ■ | ■ | ■ | ■ | ■ | ■ | ■ | ■ | ■ | ■ | ■ | ■ | ■ | ■ | ■ | ■ | ■ | ■ | ■ | ■ | ■ | ■ | ■ | ■ | ■ | ■ | 81.1 | | |
| | 31 Under 75 mortality rate: cancer | N/A | 164.4 | ■ | N/A | ■ | ■ | ■ | ■ | ■ | ■ | ■ | ■ | ■ | ■ | ■ | ■ | ■ | ■ | ■ | ■ | ■ | ■ | ■ | ■ | ■ | ■ | ■ | ■ | ■ | ■ | ■ | ■ | ■ | 146.5 | | |
| | 32 Killed and seriously injured on roads | ■ | ■ | 25.4 | ■ | 27.7 | ■ | ■ | ■ | ■ | ■ | ■ | ■ | ■ | ■ | ■ | ■ | ■ | ■ | ■ | ■ | ■ | ■ | ■ | ■ | ■ | ■ | ■ | ■ | ■ | ■ | ■ | ■ | ■ | 40.5 | | |

Warwickshire

HEALTH PROFILE 2014 – Summary of changes

See technical document for explanation of the purpose of this summary, the tartan rug display and indicator details

KEY: ■ NO change
 ▲ Improvement
 ▼ Worsening

| Health Profile indicator (see technical document for further details) | | 2014 | | 2013 | | 2014 Ratings for Counties / Unitary Authorities in PHE Centre area | | | | | | | | | | | | | | | | 2014 | | | | | | | | | | | | | | | |
|---|--|-------------------------|--------|-------|--------|--|---|---|---|---|---|---|---|---|----|----|----|----|----|----|----|------|----|----|----|----|----|----|----|----|----|----|----|----|-------|-------|------|
| | | Value | Change | Value | Change | 1 | 2 | 3 | 4 | 5 | 6 | 7 | 8 | 9 | 10 | 11 | 12 | 13 | 14 | 15 | 16 | 17 | 18 | 19 | 20 | 21 | 22 | 23 | 24 | 25 | 26 | 27 | 28 | 29 | 30 | 31 | 32 |
| ■ | 1 Deprivation | N/A | 5.9 | ■ | N/A | ■ | ■ | ■ | ■ | ■ | ■ | ■ | ■ | ■ | ■ | ■ | ■ | ■ | ■ | ■ | ■ | ■ | ■ | ■ | ■ | ■ | ■ | ■ | ■ | ■ | ■ | ■ | ■ | ■ | ■ | ■ | 20.4 |
| | 2 Children in poverty | N/A | 14.1 | ■ | N/A | ■ | ■ | ■ | ■ | ■ | ■ | ■ | ■ | ■ | ■ | ■ | ■ | ■ | ■ | ■ | ■ | ■ | ■ | ■ | ■ | ■ | ■ | ■ | ■ | ■ | ■ | ■ | ■ | ■ | ■ | 20.6 | |
| | 3 Statutory homelessness | N/A | 0.3 | ■ | N/A | ■ | ■ | ■ | ■ | ■ | ■ | ■ | ■ | ■ | ■ | ■ | ■ | ■ | ■ | ■ | ■ | ■ | ■ | ■ | ■ | ■ | ■ | ■ | ■ | ■ | ■ | ■ | ■ | ■ | ■ | 2.4 | |
| | 4 GCSE achieved | ■ | 65.1 | ■ | 63.0 | ■ | ■ | ■ | ■ | ■ | ■ | ■ | ■ | ■ | ■ | ■ | ■ | ■ | ■ | ■ | ■ | ■ | ■ | ■ | ■ | ■ | ■ | ■ | ■ | ■ | ■ | ■ | ■ | ■ | 60.8 | | |
| | 5 Violent crime | N/A | 7.7 | ■ | N/A | ■ | ■ | ■ | ■ | ■ | ■ | ■ | ■ | ■ | ■ | ■ | ■ | ■ | ■ | ■ | ■ | ■ | ■ | ■ | ■ | ■ | ■ | ■ | ■ | ■ | ■ | ■ | ■ | ■ | ■ | 10.6 | |
| | 6 Long term unemployment | N/A | 4.9 | ■ | N/A | ■ | ■ | ■ | ■ | ■ | ■ | ■ | ■ | ■ | ■ | ■ | ■ | ■ | ■ | ■ | ■ | ■ | ■ | ■ | ■ | ■ | ■ | ■ | ■ | ■ | ■ | ■ | ■ | ■ | ■ | 9.9 | |
| ■ | 7 Smoking status at time of delivery | N/A | 17.6 | ■ | N/A | ■ | ■ | ■ | ■ | ■ | ■ | ■ | ■ | ■ | ■ | ■ | ■ | ■ | ■ | ■ | ■ | ■ | ■ | ■ | ■ | ■ | ■ | ■ | ■ | ■ | ■ | ■ | ■ | ■ | 12.7 | | |
| | 8 Breastfeeding initiation | N/A | 71.9 | ■ | N/A | ■ | ■ | ■ | ■ | ■ | ■ | ■ | ■ | ■ | ■ | ■ | ■ | ■ | ■ | ■ | ■ | ■ | ■ | ■ | ■ | ■ | ■ | ■ | ■ | ■ | ■ | ■ | ■ | ■ | 73.9 | | |
| | 9 Obese children (year 6) | ■ | 16.3 | ■ | 17.4 | ■ | ■ | ■ | ■ | ■ | ■ | ■ | ■ | ■ | ■ | ■ | ■ | ■ | ■ | ■ | ■ | ■ | ■ | ■ | ■ | ■ | ■ | ■ | ■ | ■ | ■ | ■ | ■ | ■ | 18.9 | | |
| ■ | 10 Alcohol specific hospital stays <18 | N/A | 46.2 | ■ | N/A | ■ | ■ | ■ | ■ | ■ | ■ | ■ | ■ | ■ | ■ | ■ | ■ | ■ | ■ | ■ | ■ | ■ | ■ | ■ | ■ | ■ | ■ | ■ | ■ | ■ | ■ | ■ | ■ | ■ | 44.9 | | |
| | 11 Under 18 conceptions | N/A | 24.3 | ■ | N/A | ■ | ■ | ■ | ■ | ■ | ■ | ■ | ■ | ■ | ■ | ■ | ■ | ■ | ■ | ■ | ■ | ■ | ■ | ■ | ■ | ■ | ■ | ■ | ■ | ■ | ■ | ■ | ■ | ■ | 27.7 | | |
| | 12 Smoking prevalence | N/A | 17.9 | ■ | N/A | ■ | ■ | ■ | ■ | ■ | ■ | ■ | ■ | ■ | ■ | ■ | ■ | ■ | ■ | ■ | ■ | ■ | ■ | ■ | ■ | ■ | ■ | ■ | ■ | ■ | ■ | ■ | ■ | ■ | 19.5 | | |
| | 13 % of physically active adults | N/A | 55.3 | ■ | N/A | ■ | ■ | ■ | ■ | ■ | ■ | ■ | ■ | ■ | ■ | ■ | ■ | ■ | ■ | ■ | ■ | ■ | ■ | ■ | ■ | ■ | ■ | ■ | ■ | ■ | ■ | ■ | ■ | ■ | 56.0 | | |
| | 14 Obese adults | N/A | 21.8 | ■ | N/A | ■ | ■ | ■ | ■ | ■ | ■ | ■ | ■ | ■ | ■ | ■ | ■ | ■ | ■ | ■ | ■ | ■ | ■ | ■ | ■ | ■ | ■ | ■ | ■ | ■ | ■ | ■ | ■ | ■ | ■ | 23.0 | |
| ■ | 15 Excess weight in adults | N/A | 64.8 | ■ | N/A | ■ | ■ | ■ | ■ | ■ | ■ | ■ | ■ | ■ | ■ | ■ | ■ | ■ | ■ | ■ | ■ | ■ | ■ | ■ | ■ | ■ | ■ | ■ | ■ | ■ | ■ | ■ | ■ | ■ | 63.8 | | |
| | 16 Incidence of malignant melanoma | ■ | 13.4 | ■ | 14.0 | ■ | ■ | ■ | ■ | ■ | ■ | ■ | ■ | ■ | ■ | ■ | ■ | ■ | ■ | ■ | ■ | ■ | ■ | ■ | ■ | ■ | ■ | ■ | ■ | ■ | ■ | ■ | ■ | ■ | 14.8 | | |
| | 17 Hospital stays for self-harm | N/A | 194.3 | ■ | N/A | ■ | ■ | ■ | ■ | ■ | ■ | ■ | ■ | ■ | ■ | ■ | ■ | ■ | ■ | ■ | ■ | ■ | ■ | ■ | ■ | ■ | ■ | ■ | ■ | ■ | ■ | ■ | ■ | ■ | 188.0 | | |
| | 18 Hospital stays for alcohol related harm | N/A | 576 | ■ | N/A | ■ | ■ | ■ | ■ | ■ | ■ | ■ | ■ | ■ | ■ | ■ | ■ | ■ | ■ | ■ | ■ | ■ | ■ | ■ | ■ | ■ | ■ | ■ | ■ | ■ | ■ | ■ | ■ | ■ | 637 | | |
| | 19 Drug misuse | N/A | 6.2 | ■ | N/A | ■ | ■ | ■ | ■ | ■ | ■ | ■ | ■ | ■ | ■ | ■ | ■ | ■ | ■ | ■ | ■ | ■ | ■ | ■ | ■ | ■ | ■ | ■ | ■ | ■ | ■ | ■ | ■ | ■ | 8.6 | | |
| | 20 Recorded diabetes | ■ | 5.70 | ▼ | 5.45 | ■ | ■ | ■ | ■ | ■ | ■ | ■ | ■ | ■ | ■ | ■ | ■ | ■ | ■ | ■ | ■ | ■ | ■ | ■ | ■ | ■ | ■ | ■ | ■ | ■ | ■ | ■ | ■ | ■ | 6.01 | | |
| | 21 Incidence of TB | N/A | 8.9 | ■ | N/A | ■ | ■ | ■ | ■ | ■ | ■ | ■ | ■ | ■ | ■ | ■ | ■ | ■ | ■ | ■ | ■ | ■ | ■ | ■ | ■ | ■ | ■ | ■ | ■ | ■ | ■ | ■ | ■ | ■ | 15.1 | | |
| | 22 Acute sexually transmitted infections | N/A | 612 | ■ | N/A | ■ | ■ | ■ | ■ | ■ | ■ | ■ | ■ | ■ | ■ | ■ | ■ | ■ | ■ | ■ | ■ | ■ | ■ | ■ | ■ | ■ | ■ | ■ | ■ | ■ | ■ | ■ | ■ | ■ | ■ | 804 | |
| | 23 Hip fractures in people >65 | N/A | 555.6 | ■ | N/A | ■ | ■ | ■ | ■ | ■ | ■ | ■ | ■ | ■ | ■ | ■ | ■ | ■ | ■ | ■ | ■ | ■ | ■ | ■ | ■ | ■ | ■ | ■ | ■ | ■ | ■ | ■ | ■ | ■ | ■ | 568.1 | |
| | ■ | 24 Excess winter deaths | N/A | 18.2 | ■ | N/A | ■ | ■ | ■ | ■ | ■ | ■ | ■ | ■ | ■ | ■ | ■ | ■ | ■ | ■ | ■ | ■ | ■ | ■ | ■ | ■ | ■ | ■ | ■ | ■ | ■ | ■ | ■ | ■ | ■ | 16.5 | |
| 25 Life expectancy at birth (male) | | ■ | 79.8 | ■ | 79.5 | ■ | ■ | ■ | ■ | ■ | ■ | ■ | ■ | ■ | ■ | ■ | ■ | ■ | ■ | ■ | ■ | ■ | ■ | ■ | ■ | ■ | ■ | ■ | ■ | ■ | ■ | ■ | ■ | ■ | 79.2 | | |
| 26 Life expectancy at birth (female) | | ■ | 83.8 | ■ | 83.5 | ■ | ■ | ■ | ■ | ■ | ■ | ■ | ■ | ■ | ■ | ■ | ■ | ■ | ■ | ■ | ■ | ■ | ■ | ■ | ■ | ■ | ■ | ■ | ■ | ■ | ■ | ■ | ■ | ■ | 83.0 | | |
| 27 Infant mortality | | ■ | 4.0 | ■ | 5.0 | ■ | ■ | ■ | ■ | ■ | ■ | ■ | ■ | ■ | ■ | ■ | ■ | ■ | ■ | ■ | ■ | ■ | ■ | ■ | ■ | ■ | ■ | ■ | ■ | ■ | ■ | ■ | ■ | ■ | 4.1 | | |
| 28 Smoking related deaths | | N/A | 240.7 | ■ | N/A | ■ | ■ | ■ | ■ | ■ | ■ | ■ | ■ | ■ | ■ | ■ | ■ | ■ | ■ | ■ | ■ | ■ | ■ | ■ | ■ | ■ | ■ | ■ | ■ | ■ | ■ | ■ | ■ | ■ | ■ | 2919 | |
| 29 Suicide rate | | N/A | 9.6 | ■ | N/A | ■ | ■ | ■ | ■ | ■ | ■ | ■ | ■ | ■ | ■ | ■ | ■ | ■ | ■ | ■ | ■ | ■ | ■ | ■ | ■ | ■ | ■ | ■ | ■ | ■ | ■ | ■ | ■ | ■ | 8.5 | | |
| 30 Under 75 mortality rate: CV | | N/A | 71.5 | ■ | N/A | ■ | ■ | ■ | ■ | ■ | ■ | ■ | ■ | ■ | ■ | ■ | ■ | ■ | ■ | ■ | ■ | ■ | ■ | ■ | ■ | ■ | ■ | ■ | ■ | ■ | ■ | ■ | ■ | ■ | 81.1 | | |
| 31 Under 75 mortality rate: cancer | | N/A | 130.8 | ■ | N/A | ■ | ■ | ■ | ■ | ■ | ■ | ■ | ■ | ■ | ■ | ■ | ■ | ■ | ■ | ■ | ■ | ■ | ■ | ■ | ■ | ■ | ■ | ■ | ■ | ■ | ■ | ■ | ■ | ■ | ■ | 146.5 | |
| 32 Killed and seriously injured on roads | | ■ | 55.7 | ■ | 56.5 | ■ | ■ | ■ | ■ | ■ | ■ | ■ | ■ | ■ | ■ | ■ | ■ | ■ | ■ | ■ | ■ | ■ | ■ | ■ | ■ | ■ | ■ | ■ | ■ | ■ | ■ | ■ | ■ | ■ | 40.5 | | |

Wolverhampton

HEALTH PROFILE 2014 – Summary of changes

See technical document for explanation of the purpose of this summary, the tartan rug display and indicator details

| KEY: ■ NO change | | | 2014 | | | 2013 | | | 2014 Ratings for Counties / Unitary Authorities in PHE Centre area | | | | | | | | | | | | | 2014 | | |
|---|--|-----|-------|---|------|------|--|--|--|--|--|--|--|--|--|--|--|--|-------|--|--|------|--|--|
| ↑ Improvement | | | | | | | | | | | | | | | | | | | | | | | | |
| ■ Worsening | | | | | | | | | | | | | | | | | | | | | | | | |
| Health Profile indicator (see technical document for further details) | | | | | | | | | | | | | | | | | | | | | | | | |
| ■ | 1 Deprivation | N/A | 53.5 | ■ | N/A | ■ | | | | | | | | | | | | | 20.4 | | | | | |
| | 2 Children in poverty | N/A | 31.5 | ■ | N/A | ■ | | | | | | | | | | | | | 20.6 | | | | | |
| | 3 Statutory homelessness | N/A | 0.5 | ■ | N/A | ■ | | | | | | | | | | | | | 2.4 | | | | | |
| ■ | 4 GCSE achieved | ↑ | 60.8 | ↑ | 56.1 | ■ | | | | | | | | | | | | | 60.8 | | | | | |
| | 5 Violent crime | N/A | 12.0 | ■ | N/A | ■ | | | | | | | | | | | | | 10.6 | | | | | |
| | 6 Long term unemployment | N/A | 26.6 | ■ | N/A | ■ | | | | | | | | | | | | | 9.9 | | | | | |
| ■ | 7 Smoking status at time of delivery | N/A | 18.6 | ■ | N/A | ■ | | | | | | | | | | | | | 12.7 | | | | | |
| | 8 Breastfeeding initiation | N/A | 64.5 | ■ | N/A | ■ | | | | | | | | | | | | | 73.9 | | | | | |
| | 9 Obese children (year 6) | ■ | 24.4 | ■ | 24.2 | ■ | | | | | | | | | | | | | 18.9 | | | | | |
| ■ | 10 Alcohol specific hospital stays <18 | N/A | 33.3 | ■ | N/A | ■ | | | | | | | | | | | | | 44.9 | | | | | |
| | 11 Under 18 conceptions | N/A | 42.2 | ■ | N/A | ■ | | | | | | | | | | | | | 27.7 | | | | | |
| | 12 Smoking prevalence | N/A | 22.9 | ■ | N/A | ■ | | | | | | | | | | | | | 19.5 | | | | | |
| ■ | 13 % of physically active adults | N/A | 51.9 | ■ | N/A | ■ | | | | | | | | | | | | | 56.0 | | | | | |
| | 14 Obese adults | N/A | 28.5 | ■ | N/A | ■ | | | | | | | | | | | | | 23.0 | | | | | |
| | 15 Excess weight in adults | N/A | 69.8 | ■ | N/A | ■ | | | | | | | | | | | | | 63.8 | | | | | |
| ■ | 16 Incidence of malignant melanoma | ■ | 5.4 | ■ | 5.2 | ■ | | | | | | | | | | | | | 14.8 | | | | | |
| | 17 Hospital stays for self-harm | N/A | 143.2 | ■ | N/A | ■ | | | | | | | | | | | | | 188.0 | | | | | |
| | 18 Hospital stays for alcohol related harm | N/A | 782 | ■ | N/A | ■ | | | | | | | | | | | | | 637 | | | | | |
| ■ | 19 Drug misuse | N/A | 13.3 | ■ | N/A | ■ | | | | | | | | | | | | | 8.6 | | | | | |
| | 20 Recorded diabetes | ■ | 7.70 | ↓ | 7.44 | ■ | | | | | | | | | | | | | 6.01 | | | | | |
| | 21 Incidence of TB | N/A | 32.9 | ■ | N/A | ■ | | | | | | | | | | | | | 15.1 | | | | | |
| ■ | 22 Acute sexually transmitted infections | N/A | 669 | ■ | N/A | ■ | | | | | | | | | | | | | 804 | | | | | |
| | 23 Hip fractures in people >65 | N/A | 548.0 | ■ | N/A | ■ | | | | | | | | | | | | | 568.1 | | | | | |
| | 24 Excess winter deaths | N/A | 19.7 | ■ | N/A | ■ | | | | | | | | | | | | | 16.5 | | | | | |
| ■ | 25 Life expectancy at birth (male) | ■ | 77.4 | ■ | 77.3 | ■ | | | | | | | | | | | | | 79.2 | | | | | |
| | 26 Life expectancy at birth (female) | ■ | 81.7 | ■ | 81.6 | ■ | | | | | | | | | | | | | 83.0 | | | | | |
| | 27 Infant mortality | ■ | 7.5 | ■ | 7.5 | ■ | | | | | | | | | | | | | 4.1 | | | | | |
| ■ | 28 Smoking related deaths | N/A | 329.8 | ■ | N/A | ■ | | | | | | | | | | | | | 2919 | | | | | |
| | 29 Suicide rate | N/A | 7.7 | ■ | N/A | ■ | | | | | | | | | | | | | 8.5 | | | | | |
| | 30 Under 75 mortality rate: CV | N/A | 105.7 | ■ | N/A | ■ | | | | | | | | | | | | | 81.1 | | | | | |
| ■ | 31 Under 75 mortality rate: cancer | N/A | 158.4 | ■ | N/A | ■ | | | | | | | | | | | | | 146.5 | | | | | |
| | 32 Killed and seriously injured on roads | ■ | 33.9 | ■ | 30.3 | ■ | | | | | | | | | | | | | 40.5 | | | | | |

Worcestershire

HEALTH PROFILE 2014 – Summary of changes

See technical document for explanation of the purpose of this summary, the tartan rug display and indicator details

KEY:
 ■ NO change
 ▲ Improvement
 ▼ Worsening

| Health Profile indicator (see technical document for further details) | 2014 | 2013 | 2014 Ratings for Counties / Unitary Authorities in PHE Centre area | | | | | | | | | | | | | | | | | 2014 | | | | | | | | | | | | | | | | | | |
|---|------|-------|--|---|---|---|---|---|---|---|---|----|----|----|----|----|----|----|----|------|----|----|----|----|----|----|----|----|----|----|----|----|----|----|----|--|------|-------|
| | | | 1 | 2 | 3 | 4 | 5 | 6 | 7 | 8 | 9 | 10 | 11 | 12 | 13 | 14 | 15 | 16 | 17 | | 18 | 19 | 20 | 21 | 22 | 23 | 24 | 25 | 26 | 27 | 28 | 29 | 30 | 31 | 32 | | | |
| 1 Deprivation | N/A | 9.9 | | | | | | | | | | | | | | | | | | | | | | | | | | | | | | | | | | | 20.4 | |
| 2 Children in poverty | N/A | 15.7 | | | | | | | | | | | | | | | | | | | | | | | | | | | | | | | | | | | | 20.6 |
| 3 Statutory homelessness | N/A | 0.5 | | | | | | | | | | | | | | | | | | | | | | | | | | | | | | | | | | | | 2.4 |
| 4 GCSE achieved | ■ ■ | 62.7 | | | | | | | | | | | | | | | | | | | | | | | | | | | | | | | | | | | 60.8 | |
| 5 Violent crime | N/A | 10.1 | | | | | | | | | | | | | | | | | | | | | | | | | | | | | | | | | | | | 10.6 |
| 6 Long term unemployment | N/A | 6.3 | | | | | | | | | | | | | | | | | | | | | | | | | | | | | | | | | | | | 9.9 |
| 7 Smoking status at time of delivery | N/A | 13.8 | | | | | | | | | | | | | | | | | | | | | | | | | | | | | | | | | | | | 12.7 |
| 8 Breastfeeding initiation | N/A | 72.7 | | | | | | | | | | | | | | | | | | | | | | | | | | | | | | | | | | | | 73.9 |
| 9 Obese children (year 6) | ▲ ■ | 17.5 | | | | | | | | | | | | | | | | | | | | | | | | | | | | | | | | | | | | 18.9 |
| 10 Alcohol specific hospital stays <18 | N/A | 57.8 | | | | | | | | | | | | | | | | | | | | | | | | | | | | | | | | | | | | 44.9 |
| 11 Under 18 conceptions | N/A | 27.3 | | | | | | | | | | | | | | | | | | | | | | | | | | | | | | | | | | | | 27.7 |
| 12 Smoking prevalence | N/A | 17.7 | | | | | | | | | | | | | | | | | | | | | | | | | | | | | | | | | | | | 19.5 |
| 13 % of physically active adults | N/A | 58.4 | | | | | | | | | | | | | | | | | | | | | | | | | | | | | | | | | | | | 56.0 |
| 14 Obese adults | N/A | 23.2 | | | | | | | | | | | | | | | | | | | | | | | | | | | | | | | | | | | | 23.0 |
| 15 Excess weight in adults | N/A | 65.5 | | | | | | | | | | | | | | | | | | | | | | | | | | | | | | | | | | | | 63.8 |
| 16 Incidence of malignant melanoma | ■ ■ | 16.2 | | | | | | | | | | | | | | | | | | | | | | | | | | | | | | | | | | | | 14.8 |
| 17 Hospital stays for self-harm | N/A | 210.0 | | | | | | | | | | | | | | | | | | | | | | | | | | | | | | | | | | | | 188.0 |
| 18 Hospital stays for alcohol related harm | N/A | 606 | | | | | | | | | | | | | | | | | | | | | | | | | | | | | | | | | | | | 637 |
| 19 Drug misuse | N/A | 7.1 | | | | | | | | | | | | | | | | | | | | | | | | | | | | | | | | | | | | 8.6 |
| 20 Recorded diabetes | ■ ▼ | 6.27 | | | | | | | | | | | | | | | | | | | | | | | | | | | | | | | | | | | | 6.01 |
| 21 Incidence of TB | N/A | 4.5 | | | | | | | | | | | | | | | | | | | | | | | | | | | | | | | | | | | | 15.1 |
| 22 Acute sexually transmitted infections | N/A | 522 | | | | | | | | | | | | | | | | | | | | | | | | | | | | | | | | | | | | 804 |
| 23 Hip fractures in people >65 | N/A | 570.6 | | | | | | | | | | | | | | | | | | | | | | | | | | | | | | | | | | | | 568.1 |
| 24 Excess winter deaths | N/A | 17.8 | | | | | | | | | | | | | | | | | | | | | | | | | | | | | | | | | | | | 16.5 |
| 25 Life expectancy at birth (male) | ■ ■ | 79.8 | | | | | | | | | | | | | | | | | | | | | | | | | | | | | | | | | | | 79.2 | |
| 26 Life expectancy at birth (female) | ■ ■ | 83.5 | | | | | | | | | | | | | | | | | | | | | | | | | | | | | | | | | | | | 83.0 |
| 27 Infant mortality | ▲ ■ | 3.1 | | | | | | | | | | | | | | | | | | | | | | | | | | | | | | | | | | | | 4.1 |
| 28 Smoking related deaths | N/A | 246.5 | | | | | | | | | | | | | | | | | | | | | | | | | | | | | | | | | | | | 2919 |
| 29 Suicide rate | N/A | 9.1 | | | | | | | | | | | | | | | | | | | | | | | | | | | | | | | | | | | | 8.5 |
| 30 Under 75 mortality rate: CV | N/A | 73.8 | | | | | | | | | | | | | | | | | | | | | | | | | | | | | | | | | | | | 81.1 |
| 31 Under 75 mortality rate: cancer | N/A | 135.1 | | | | | | | | | | | | | | | | | | | | | | | | | | | | | | | | | | | | 146.5 |
| 32 Killed and seriously injured on roads | ■ ■ | 28.8 | | | | | | | | | | | | | | | | | | | | | | | | | | | | | | | | | | | | 40.5 |

Lower Tier Local Authorities

Staffordshire

Cannock Chase

HEALTH PROFILE 2014 – Summary of changes

See technical document for explanation of the purpose of this summary, the tartan rug display and indicator details

| Health Profile indicator (see technical document for further details) | | KEY: | | 2014 | | 2013 | | 2014 ratings for lower tier local authorities in County area | | | | | | 2014 | | | |
|---|--|--------------|------------|-------|--|------|--|--|---|--|---|---|--|------|--|--|-------|
| | | ↑Improvement | ↓Worsening | | | | | | | | | | | | | | |
| 1 | Deprivation | N/A | | 116 | | N/A | | | | | | | | | | | 20.4 |
| | 2 Children in poverty | N/A | | 18.9 | | N/A | | | | | | | | | | | 20.6 |
| | 3 Statutory homelessness | N/A | | 0.1 | | N/A | | | | | | | | | | | 2.4 |
| | 4 GCSE achieved | - | - | 56.2 | | 53.2 | | | | | | | | | | | 60.8 |
| | 5 Violent crime | N/A | | 11.5 | | N/A | | | | | | | | | | | 10.6 |
| | 6 Long term unemployment | N/A | | 8.8 | | N/A | | | | | | | | | | | 9.9 |
| 7 | Smoking status at time of delivery | N/A | | 15.1 | | N/A | | | | | | | | | | | 12.7 |
| | 8 Breastfeeding initiation | N/A | | 68.5 | | N/A | | | | | | | | | | | 73.9 |
| | 9 Obese children (year 6) | ↑ | - | 19.0 | | 22.9 | | | | | | | | | | | 18.9 |
| | 10 Alcohol specific hospital stays <18 | N/A | | 100.8 | | N/A | | | | | | | | | | | 44.9 |
| 11 | Under 18 conceptions | N/A | | 316 | | N/A | | | | | | | | | | | 27.7 |
| | 12 Smoking prevalence | N/A | | 27.8 | | N/A | | | | | | | | | | | 19.5 |
| | 13 % of physically active adults | N/A | | 52.4 | | N/A | | | | | | | | | | | 56.0 |
| | 14 Obese adults | N/A | | 30.3 | | N/A | | | | | | | | | | | 23.0 |
| | 15 Excess weight in adults | N/A | | 62.5 | | N/A | | | | | | | | | | | 63.8 |
| 16 | Incidence of malignant melanoma | - | - | 17.2 | | 14.0 | | | | | | | | | | | 14.8 |
| | 17 Hospital stays for self-harm | N/A | | 166.4 | | N/A | | | | | | | | | | | 188.0 |
| | 18 Hospital stays for alcohol related harm | N/A | | 684 | | N/A | | | | | | | | | | | 637 |
| | 19 Drug misuse | N/A | | 8.7 | | N/A | | | | | | | | | | | 8.6 |
| | 20 Recorded diabetes | - | ↓ | 6.64 | | 6.27 | | | | | | | | | | | 6.01 |
| | 21 Incidence of TB | N/A | | 2.1 | | N/A | | | | | | | | | | | 15.1 |
| | 22 Acute sexually transmitted infections | N/A | | 796 | | N/A | | | | | | | | | | | 804 |
| | 23 Hip fractures in people >65 | N/A | | 636.5 | | N/A | | | | | | | | | | | 568.1 |
| 24 | Excess winter deaths | N/A | | 7.3 | | N/A | | | | | | | | | | | 16.5 |
| | 25 Life expectancy at birth (male) | - | - | 78.7 | | 78.5 | | | | | | | | | | | 79.2 |
| | 26 Life expectancy at birth (female) | - | - | 82.9 | | 82.7 | | | | | | | | | | | 83.0 |
| | 27 Infant mortality | - | - | 4.6 | | 4.1 | | | | | | | | | | | 4.1 |
| | 28 Smoking related deaths | N/A | | 362.5 | | N/A | | | | | | | | | | | 2919 |
| | 29 Suicide rate | N/A | | 114 | | N/A | | * | * | | * | * | | | | | 8.5 |
| | 30 Under 75 mortality rate: CV | N/A | | 85.1 | | N/A | | | | | | | | | | | 81.1 |
| | 31 Under 75 mortality rate: cancer | N/A | | 160.2 | | N/A | | | | | | | | | | | 146.5 |
| | 32 Killed and seriously injured on roads | - | - | 24.3 | | 20.0 | | | | | | | | | | | 40.5 |

East Staffordshire

HEALTH PROFILE 2014 – Summary of changes

See technical document for explanation of the purpose of this summary, the tartan rug display and indicator details

KEY: -No change
 ▲Improvement ▼Worsening

| | | | 2014 | | 2013 | | 2014 ratings for lower tier local authorities in County area | | | | | | | | | | 2014 | | | | | | | |
|---|---------------|-----|-------|--------|-------|--------|--|--|--|--|--|--|--|--|--|--|-------|--------|--|--|--|--|-------|--|
| Health Profile indicator (see technical document for further details) | Tartan Rug | | Value | Change | Value | Change | Tartan Rug | | | | | | | | | | Value | Change | | | | | | |
| | 1 Deprivation | N/A | | 20.2 | | N/A | | | | | | | | | | | | | | | | | 0.0 | |
| 2 Children in poverty | N/A | | 16.3 | | N/A | | | | | | | | | | | | | | | | | | 20.6 | |
| 3 Statutory homelessness | N/A | | 0.1 | | N/A | | | | | | | | | | | | | | | | | | 2.4 | |
| 4 GCSE achieved | ■ | ■ | 61.8 | | 60.8 | | | | | | | | | | | | | | | | | | 60.8 | |
| 5 Violent crime | N/A | | 11.0 | | N/A | | | | | | | | | | | | | | | | | | 10.6 | |
| 6 Long term unemployment | N/A | | 4.5 | | N/A | | | | | | | | | | | | | | | | | | 9.9 | |
| 7 Smoking status at time of delivery | N/A | | 15.1 | | N/A | | | | | | | | | | | | | | | | | | 12.7 | |
| 8 Breastfeeding initiation | N/A | | 68.5 | | N/A | | | | | | | | | | | | | | | | | | 73.9 | |
| 9 Obese children (year 6) | ■ | ■ | 18.3 | | 18.8 | | | | | | | | | | | | | | | | | | 18.9 | |
| 10 Alcohol specific hospital stays <18 | N/A | | 38.9 | | N/A | | | | | | | | | | | | | | | | | | 44.9 | |
| 11 Under 18 conceptions | N/A | | 24.5 | | N/A | | | | | | | | | | | | | | | | | | 27.7 | |
| 12 Smoking prevalence | N/A | | 11.5 | | N/A | | | | | | | | | | | | | | | | | | 19.5 | |
| 13 % of physically active adults | N/A | | 58.9 | | N/A | | | | | | | | | | | | | | | | | | 56.0 | |
| 14 Obese adults | N/A | | 31.0 | | N/A | | | | | | | | | | | | | | | | | | 23.0 | |
| 15 Excess weight in adults | N/A | | 71.6 | | N/A | | | | | | | | | | | | | | | | | | 63.8 | |
| 16 Incidence of malignant melanoma | ■ | ■ | 13.2 | | 12.7 | | | | | | | | | | | | | | | | | | 14.8 | |
| 17 Hospital stays for self-harm | N/A | | 211.0 | | N/A | | | | | | | | | | | | | | | | | | 188.0 | |
| 18 Hospital stays for alcohol related harm | N/A | | 76.4 | | N/A | | | | | | | | | | | | | | | | | | 63.7 | |
| 19 Drug misuse | N/A | | 7.8 | | N/A | | | | | | | | | | | | | | | | | | 8.6 | |
| 20 Recorded diabetes | ■ | ■ | 6.31 | | 6.02 | | | | | | | | | | | | | | | | | | 6.01 | |
| 21 Incidence of TB | N/A | | 14.1 | | N/A | | | | | | | | | | | | | | | | | | 15.1 | |
| 22 Acute sexually transmitted infections | N/A | | 61.4 | | N/A | | | | | | | | | | | | | | | | | | 80.4 | |
| 23 Hip fractures in people >65 | N/A | | 621.5 | | N/A | | | | | | | | | | | | | | | | | | 568.1 | |
| 24 Excess winter deaths | N/A | | 10.3 | | N/A | | | | | | | | | | | | | | | | | | 16.5 | |
| 25 Life expectancy at birth (male) | ■ | ■ | 78.5 | | 78.0 | | | | | | | | | | | | | | | | | | 79.2 | |
| 26 Life expectancy at birth (female) | ■ | ■ | 82.9 | | 83.0 | | | | | | | | | | | | | | | | | | 83.0 | |
| 27 Infant mortality | ■ | ■ | 5.4 | | 5.5 | | | | | | | | | | | | | | | | | | 4.1 | |
| 28 Smoking related deaths | N/A | | 274.2 | | N/A | | | | | | | | | | | | | | | | | | 291.9 | |
| 29 Suicide rate | N/A | | * | | N/A | | | | | | | | | | | | | | | | | | 8.5 | |
| 30 Under 75 mortality rate: CV | N/A | | 83.2 | | N/A | | | | | | | | | | | | | | | | | | 81.1 | |
| 31 Under 75 mortality rate: cancer | N/A | | 152.7 | | N/A | | | | | | | | | | | | | | | | | | 146.5 | |
| 32 Killed and seriously injured on roads | ■ | ■ | 28.4 | | 30.1 | | | | | | | | | | | | | | | | | | 40.5 | |

Lichfield

HEALTH PROFILE 2014 – Summary of changes

See technical document for explanation of the purpose of this summary, the tartan rug display and indicator details

KEY: -No change
 ↑Improvement ↓Worsening

| Health Profile indicator (see technical document for further details) | 2014 | | 2013 | | 2014 ratings for lower tier local authorities in County area | | | | | | | | | | 2014 | | | |
|---|------|-------|------|------|--|---|---|---|---|---|---|---|---|----|------|----|----|-------|
| | 2014 | 2013 | 2014 | 2013 | 1 | 2 | 3 | 4 | 5 | 6 | 7 | 8 | 9 | 10 | 11 | 12 | 13 | 2014 |
| 1 Deprivation | N/A | 3.7 | | N/A | | | | | | | | | | | | | | 20.4 |
| 2 Children in poverty | N/A | 13.3 | | N/A | | | | | | | | | | | | | | 20.6 |
| 3 Statutory homelessness | N/A | 0.4 | | N/A | | | | | | | | | | | | | | 2.4 |
| 4 GCSE achieved | ↑ | - | 64.0 | 59.0 | | | | | | | | | | | | | | 60.8 |
| 5 Violent crime | N/A | 6.2 | | N/A | | | | | | | | | | | | | | 10.6 |
| 6 Long term unemployment | N/A | 3.7 | | N/A | | | | | | | | | | | | | | 9.9 |
| 7 Smoking status at time of delivery | N/A | 15.1 | | N/A | | | | | | | | | | | | | | 12.7 |
| 8 Breastfeeding initiation | N/A | 68.5 | | N/A | | | | | | | | | | | | | | 73.9 |
| 9 Obese children (year 6) | - | - | 16.1 | 16.5 | | | | | | | | | | | | | | 18.9 |
| 10 Alcohol specific hospital stays <18 | N/A | 48.1 | | N/A | | | | | | | | | | | | | | 44.9 |
| 11 Under 18 conceptions | N/A | 33.5 | | N/A | | | | | | | | | | | | | | 27.7 |
| 12 Smoking prevalence | N/A | 19.1 | | N/A | | | | | | | | | | | | | | 19.5 |
| 13 % of physically active adults | N/A | 59.3 | | N/A | | | | | | | | | | | | | | 56.0 |
| 14 Obese adults | N/A | 23.5 | | N/A | | | | | | | | | | | | | | 23.0 |
| 15 Excess weight in adults | N/A | 66.7 | | N/A | | | | | | | | | | | | | | 63.8 |
| 16 Incidence of malignant melanoma | ↓ | - | 21.0 | 15.7 | | | | | | | | | | | | | | 14.8 |
| 17 Hospital stays for self-harm | N/A | 147.6 | | N/A | | | | | | | | | | | | | | 188.0 |
| 18 Hospital stays for alcohol related harm | N/A | 628 | | N/A | | | | | | | | | | | | | | 637 |
| 19 Drug misuse | N/A | 3.1 | | N/A | | | | | | | | | | | | | | 8.6 |
| 20 Recorded diabetes | ↓ | - | 5.84 | 5.56 | | | | | | | | | | | | | | 6.01 |
| 21 Incidence of TB | N/A | 2.0 | | N/A | | | | | | | | | | | | | | 15.1 |
| 22 Acute sexually transmitted infections | N/A | 602 | | N/A | | | | | | | | | | | | | | 804 |
| 23 Hip fractures in people >65 | N/A | 5914 | | N/A | | | | | | | | | | | | | | 568.1 |
| 24 Excess winter deaths | N/A | 23.8 | | N/A | | | | | | | | | | | | | | 16.5 |
| 25 Life expectancy at birth (male) | - | - | 79.9 | 79.4 | | | | | | | | | | | | | | 79.2 |
| 26 Life expectancy at birth (female) | - | - | 82.9 | 82.6 | | | | | | | | | | | | | | 83.0 |
| 27 Infant mortality | - | - | 3.4 | 5.0 | | | | | | | | | | | | | | 4.1 |
| 28 Smoking related deaths | N/A | 226.6 | | N/A | | | | | | | | | | | | | | 2919 |
| 29 Suicide rate | N/A | * | * | N/A | | | | | | | | | | | | | | 8.5 |
| 30 Under 75 mortality rate: CV | N/A | 69.8 | | N/A | | | | | | | | | | | | | | 81.1 |
| 31 Under 75 mortality rate: cancer | N/A | 133.7 | | N/A | | | | | | | | | | | | | | 146.5 |
| 32 Killed and seriously injured on roads | - | - | 20.5 | 22.2 | | | | | | | | | | | | | | 40.5 |

Newcastle-under-Lyme

HEALTH PROFILE 2014 – Summary of changes

See technical document for explanation of the purpose of this summary, the tartan rug display and indicator details

KEY: -No change
 ↑Improvement ↓Worsening

| Health Profile indicator (see technical document for further details) | 2014 | | 2013 | | 2014 ratings for lower tier local authorities in County area | | | | | | | | 2014 | | | | | |
|---|-------|--------|-------|--------|--|---|---|---|---|---|---|---|------|----|--|--|--|-------|
| | Value | Change | Value | Change | 1 | 2 | 3 | 4 | 5 | 6 | 7 | 8 | 9 | 10 | | | | |
| 1 Deprivation | N/A | | 14.7 | | N/A | | | | | | | | | | | | | 20.4 |
| 2 Children in poverty | N/A | | 17.7 | | N/A | | | | | | | | | | | | | 20.6 |
| 3 Statutory homelessness | N/A | | 0.0 | | N/A | | | | | | | | | | | | | 2.4 |
| 4 GCSE achieved | ↓ | - | 59.9 | | 62.0 | | | | | | | | | | | | | 60.8 |
| 5 Violent crime | N/A | | 11.1 | | N/A | | | | | | | | | | | | | 10.6 |
| 6 Long term unemployment | N/A | | 6.3 | | N/A | | | | | | | | | | | | | 9.9 |
| 7 Smoking status at time of delivery | N/A | | 15.3 | | N/A | | | | | | | | | | | | | 12.7 |
| 8 Breastfeeding initiation | N/A | | 68.7 | | N/A | | | | | | | | | | | | | 73.9 |
| 9 Obese children (year 6) | - | - | 20.7 | | 20.2 | | | | | | | | | | | | | 18.9 |
| 10 Alcohol specific hospital stays <18 | N/A | | 32.0 | | N/A | | | | | | | | | | | | | 44.9 |
| 11 Under 18 conceptions | N/A | | 29.9 | | N/A | | | | | | | | | | | | | 27.7 |
| 12 Smoking prevalence | N/A | | 22.0 | | N/A | | | | | | | | | | | | | 19.5 |
| 13 % of physically active adults | N/A | | 53.3 | | N/A | | | | | | | | | | | | | 56.0 |
| 14 Obese adults | N/A | | 18.0 | | N/A | | | | | | | | | | | | | 23.0 |
| 15 Excess weight in adults | N/A | | 63.4 | | N/A | | | | | | | | | | | | | 63.8 |
| 16 Incidence of malignant melanoma | - | - | 16.6 | | 13.5 | | | | | | | | | | | | | 14.8 |
| 17 Hospital stays for self-harm | N/A | | 262.6 | | N/A | | | | | | | | | | | | | 188.0 |
| 18 Hospital stays for alcohol related harm | N/A | | 881 | | N/A | | | | | | | | | | | | | 637 |
| 19 Drug misuse | N/A | | 6.6 | | N/A | | | | | | | | | | | | | 8.6 |
| 20 Recorded diabetes | - | ↓ | 6.80 | | 6.47 | | | | | | | | | | | | | 6.01 |
| 21 Incidence of TB | N/A | | 4.0 | | N/A | | | | | | | | | | | | | 15.1 |
| 22 Acute sexually transmitted infections | N/A | | 374 | | N/A | | | | | | | | | | | | | 804 |
| 23 Hip fractures in people >65 | N/A | | 624.8 | | N/A | | | | | | | | | | | | | 568.1 |
| 24 Excess winter deaths | N/A | | 15.5 | | N/A | | | | | | | | | | | | | 16.5 |
| 25 Life expectancy at birth (male) | - | - | 78.9 | | 78.6 | | | | | | | | | | | | | 79.2 |
| 26 Life expectancy at birth (female) | - | - | 82.3 | | 81.8 | | | | | | | | | | | | | 83.0 |
| 27 Infant mortality | - | - | 6.9 | | 7.6 | | | | | | | | | | | | | 4.1 |
| 28 Smoking related deaths | N/A | | 307.6 | | N/A | | | | | | | | | | | | | 2919 |
| 29 Suicide rate | N/A | | 10.2 | | N/A | | | | | * | * | * | * | | | | | 8.5 |
| 30 Under 75 mortality rate: CV | N/A | | 82.2 | | N/A | | | | | | | | | | | | | 81.1 |
| 31 Under 75 mortality rate: cancer | N/A | | 129.3 | | N/A | | | | | | | | | | | | | 146.5 |
| 32 Killed and seriously injured on roads | - | - | 213 | | 24.6 | | | | | | | | | | | | | 40.5 |

South Staffordshire

HEALTH PROFILE 2014 – Summary of changes

See technical document for explanation of the purpose of this summary, the tartan rug display and indicator details

KEY: -No change
 ↑Improvement ↓Worsening

| Health Profile indicator (see technical document for further details) | 2014 | | 2013 | | 2014 ratings for lower tier local authorities in County area | | | | | | | | 2014 | | | | | |
|---|-------|--------|-------|--------|--|---|---|---|---|---|---|---|------|----|--|--|--|-------|
| | Value | Change | Value | Change | 1 | 2 | 3 | 4 | 5 | 6 | 7 | 8 | 9 | 10 | | | | |
| 1 Deprivation | N/A | | 0.0 | | N/A | | | | | | | | | | | | | 20.4 |
| 2 Children in poverty | N/A | | 12.3 | | N/A | | | | | | | | | | | | | 20.6 |
| 3 Statutory homelessness | N/A | | 0.1 | | N/A | | | | | | | | | | | | | 2.4 |
| 4 GCSE achieved | ↓ | - | 57.7 | | 59.9 | | | | | | | | | | | | | 60.8 |
| 5 Violent crime | N/A | | 6.1 | | N/A | | | | | | | | | | | | | 10.6 |
| 6 Long term unemployment | N/A | | 6.5 | | N/A | | | | | | | | | | | | | 9.9 |
| 7 Smoking status at time of delivery | N/A | | 15.1 | | N/A | | | | | | | | | | | | | 12.7 |
| 8 Breastfeeding initiation | N/A | | 68.5 | | N/A | | | | | | | | | | | | | 73.9 |
| 9 Obese children (year 6) | - | - | 17.8 | | 21.0 | | | | | | | | | | | | | 18.9 |
| 10 Alcohol specific hospital stays <18 | N/A | | 37.5 | | N/A | | | | | | | | | | | | | 44.9 |
| 11 Under 18 conceptions | N/A | | 15.2 | | N/A | | | | | | | | | | | | | 27.7 |
| 12 Smoking prevalence | N/A | | 10.5 | | N/A | | | | | | | | | | | | | 19.5 |
| 13 % of physically active adults | N/A | | 53.8 | | N/A | | | | | | | | | | | | | 56.0 |
| 14 Obese adults | N/A | | 23.2 | | N/A | | | | | | | | | | | | | 23.0 |
| 15 Excess weight in adults | N/A | | 69.5 | | N/A | | | | | | | | | | | | | 63.8 |
| 16 Incidence of malignant melanoma | ↓ | - | 11.7 | | 10.9 | | | | | | | | | | | | | 14.8 |
| 17 Hospital stays for self-harm | N/A | | 110.5 | | N/A | | | | | | | | | | | | | 188.0 |
| 18 Hospital stays for alcohol related harm | N/A | | 605 | | N/A | | | | | | | | | | | | | 637 |
| 19 Drug misuse | N/A | | 2.6 | | N/A | | | | | | | | | | | | | 8.6 |
| 20 Recorded diabetes | - | - | 6.29 | | 6.09 | | | | | | | | | | | | | 6.01 |
| 21 Incidence of TB | N/A | | 18 | | N/A | | | | | | | | | | | | | 15.1 |
| 22 Acute sexually transmitted infections | N/A | | 502 | | N/A | | | | | | | | | | | | | 804 |
| 23 Hip fractures in people >65 | N/A | | 585.9 | | N/A | | | | | | | | | | | | | 568.1 |
| 24 Excess winter deaths | N/A | | 17.6 | | N/A | | | | | | | | | | | | | 16.5 |
| 25 Life expectancy at birth (male) | - | - | 80.1 | | 79.6 | | | | | | | | | | | | | 79.2 |
| 26 Life expectancy at birth (female) | - | - | 83.2 | | 83.3 | | | | | | | | | | | | | 83.0 |
| 27 Infant mortality | - | - | 3.6 | | 3.0 | | | | | | | | | | | | | 4.1 |
| 28 Smoking related deaths | N/A | | 257.5 | | N/A | | | | | | | | | | | | | 291.9 |
| 29 Suicide rate | N/A | | 7.8 | | N/A | | | | | | | | | | | | | 8.5 |
| 30 Under 75 mortality rate: CV | N/A | | 62.7 | | N/A | | | | | | | | | | | | | 81.1 |
| 31 Under 75 mortality rate: cancer | N/A | | 144.2 | | N/A | | | | | | | | | | | | | 146.5 |
| 32 Killed and seriously injured on roads | ↑ | - | 31.1 | | 37.9 | | | | | | | | | | | | | 40.5 |

Stafford

HEALTH PROFILE 2014 – Summary of changes

See technical document for explanation of the purpose of this summary, the tartan rug display and indicator details

KEY: -No change
 ↑Improvement ↓Worsening

| Health Profile indicator (see technical document for further details) | 2014 | | 2013 | | 2014 ratings for lower tier local authorities in County area | | | | | | | | 2014 | | | | |
|---|-------|--------|-------|--------|--|---|---|---|---|---|---|---|------|----|--|--|-------|
| | Value | Change | Value | Change | 1 | 2 | 3 | 4 | 5 | 6 | 7 | 8 | 9 | 10 | | | |
| 1 Deprivation | N/A | | 6.0 | | N/A | | | | | | | | | | | | 20.4 |
| 2 Children in poverty | N/A | | 12.6 | | N/A | | | | | | | | | | | | 20.6 |
| 3 Statutory homelessness | N/A | | 0.1 | | N/A | | | | | | | | | | | | 2.4 |
| 4 GCSE achieved | - | - | 64.5 | | 63.2 | | | | | | | | | | | | 60.8 |
| 5 Violent crime | N/A | | 8.7 | | N/A | | | | | | | | | | | | 10.6 |
| 6 Long term unemployment | N/A | | 4.4 | | N/A | | | | | | | | | | | | 9.9 |
| 7 Smoking status at time of delivery | N/A | | 15.1 | | N/A | | | | | | | | | | | | 12.7 |
| 8 Breastfeeding initiation | N/A | | 68.5 | | N/A | | | | | | | | | | | | 73.9 |
| 9 Obese children (year 6) | - | - | 17.6 | | 18.8 | | | | | | | | | | | | 18.9 |
| 10 Alcohol specific hospital stays <18 | N/A | | 73.9 | | N/A | | | | | | | | | | | | 44.9 |
| 11 Under 18 conceptions | N/A | | 26.1 | | N/A | | | | | | | | | | | | 27.7 |
| 12 Smoking prevalence | N/A | | 16.5 | | N/A | | | | | | | | | | | | 19.5 |
| 13 % of physically active adults | N/A | | 57.1 | | N/A | | | | | | | | | | | | 56.0 |
| 14 Obese adults | N/A | | 21.4 | | N/A | | | | | | | | | | | | 23.0 |
| 15 Excess weight in adults | N/A | | 69.6 | | N/A | | | | | | | | | | | | 63.8 |
| 16 Incidence of malignant melanoma | ↓ | - | 19.6 | | 16.8 | | | | | | | | | | | | 14.8 |
| 17 Hospital stays for self-harm | N/A | | 215.9 | | N/A | | | | | | | | | | | | 188.0 |
| 18 Hospital stays for alcohol related harm | N/A | | 713 | | N/A | | | | | | | | | | | | 637 |
| 19 Drug misuse | N/A | | 3.9 | | N/A | | | | | | | | | | | | 8.6 |
| 20 Recorded diabetes | - | ↓ | 5.68 | | 5.36 | | | | | | | | | | | | 6.01 |
| 21 Incidence of TB | N/A | | 3.8 | | N/A | | | | | | | | | | | | 15.1 |
| 22 Acute sexually transmitted infections | N/A | | 588 | | N/A | | | | | | | | | | | | 804 |
| 23 Hip fractures in people >65 | N/A | | 658.5 | | N/A | | | | | | | | | | | | 568.1 |
| 24 Excess winter deaths | N/A | | 15.8 | | N/A | | | | | | | | | | | | 16.5 |
| 25 Life expectancy at birth (male) | - | - | 80.3 | | 80.1 | | | | | | | | | | | | 79.2 |
| 26 Life expectancy at birth (female) | - | - | 83.6 | | 83.5 | | | | | | | | | | | | 83.0 |
| 27 Infant mortality | - | - | 4.9 | | 3.9 | | | | | | | | | | | | 4.1 |
| 28 Smoking related deaths | N/A | | 246.8 | | N/A | | | | | | | | | | | | 291.9 |
| 29 Suicide rate | N/A | | 8.2 | | N/A | | | | | | | | | | | | 8.5 |
| 30 Under 75 mortality rate: CV | N/A | | 63.4 | | N/A | | | | | | | | | | | | 81.1 |
| 31 Under 75 mortality rate: cancer | N/A | | 130.9 | | N/A | | | | | | | | | | | | 146.5 |
| 32 Killed and seriously injured on roads | - | - | 30.6 | | 33.8 | | | | | | | | | | | | 40.5 |

Staffordshire Moorlands

HEALTH PROFILE 2014 – Summary of changes

See technical document for explanation of the purpose of this summary, the tartan rug display and indicator details

KEY: -No change
 ▲Improvement ▼Worsening

| Health Profile indicator (see technical document for further details) | 2014 | | 2013 | | 2014 ratings for lower tier local authorities in County area | | | | | | 2014 | |
|---|-------|--------|-------|--------|--|---|---|---|---|---|------|---|
| | Score | Change | Score | Change | 1 | 2 | 3 | 4 | 5 | 6 | 7 | 8 |
| 1 Deprivation | N/A | | 4.6 | | | | | | | | | |
| 2 Children in poverty | N/A | | 11.8 | | | | | | | | | |
| 3 Statutory homelessness | N/A | | 0.5 | | | | | | | | | |
| 4 GCSE achieved | - | - | 62.3 | | 59.8 | | | | | | | |
| 5 Violent crime | N/A | | 8.3 | | | | | | | | | |
| 6 Long term unemployment | N/A | | 4.0 | | | | | | | | | |
| 7 Smoking status at time of delivery | N/A | | 15.6 | | | | | | | | | |
| 8 B breastfeeding initiation | N/A | | 68.3 | | | | | | | | | |
| 9 Obese children (year 6) | - | - | 20.3 | | 20.1 | | | | | | | |
| 10 Alcohol specific hospital stays <18 | N/A | | 50.8 | | | | | | | | | |
| 11 Under 18 conceptions | N/A | | 32.1 | | | | | | | | | |
| 12 Smoking prevalence | N/A | | 10.4 | | | | | | | | | |
| 13 % of physically active adults | N/A | | 57.2 | | | | | | | | | |
| 14 Obese adults | N/A | | 24.1 | | | | | | | | | |
| 15 Excess weight in adults | N/A | | 70.0 | | | | | | | | | |
| 16 Incidence of malignant melanoma | - | - | 9.3 | | 8.9 | | | | | | | |
| 17 Hospital stays for self-harm | N/A | | 200.2 | | | | | | | | | |
| 18 Hospital stays for alcohol related harm | N/A | | 686 | | | | | | | | | |
| 19 Drug misuse | N/A | | 5.4 | | | | | | | | | |
| 20 Recorded diabetes | - | - | 7.07 | | 6.86 | | | | | | | |
| 21 Incidence of TB | N/A | | 10 | | | | | | | | | |
| 22 Acute sexually transmitted infections | N/A | | 346 | | | | | | | | | |
| 23 Hip fractures in people >65 | N/A | | 547.0 | | | | | | | | | |
| 24 Excess winter deaths | N/A | | 15.5 | | | | | | | | | |
| 25 Life expectancy at birth (male) | - | - | 79.6 | | 79.1 | | | | | | | |
| 26 Life expectancy at birth (female) | - | - | 83.5 | | 83.1 | | | | | | | |
| 27 Infant mortality | - | - | 4.2 | | 5.7 | | | | | | | |
| 28 Smoking related deaths | N/A | | 248.6 | | | | | | | | | |
| 29 Suicide rate | N/A | | * | | * | | | | | | | |
| 30 Under 75 mortality rate: CV | N/A | | 72.5 | | | | | | | | | |
| 31 Under 75 mortality rate: cancer | N/A | | 135.7 | | | | | | | | | |
| 32 Killed and seriously injured on roads | - | - | 27.4 | | 25.1 | | | | | | | |

Tamworth

HEALTH PROFILE 2014 – Summary of changes

See technical document for explanation of the purpose of this summary, the tartan rug display and indicator details

KEY: -No change
 ▲Improvement ▼Worsening

| | | 2014 | | 2013 | | 2014 ratings for lower tier local authorities in County area | | | | | | | | | | 2014 | | | |
|---|--|------|-------|------|------|--|--|--|--|--|--|--|--|--|--|------|--|------|-------|
| Health Profile indicator (see technical document for further details) | | | | | | | | | | | | | | | | | | | |
| 1 | 1 Deprivation | N/A | 13.6 | | N/A | | | | | | | | | | | | | 20.4 | |
| | 2 Children in poverty | N/A | 19.7 | | N/A | | | | | | | | | | | | | 20.6 | |
| | 3 Statutory homelessness | N/A | 0.2 | | N/A | | | | | | | | | | | | | 2.4 | |
| | 4 GCSE achieved | - | 47.2 | | 44.7 | | | | | | | | | | | | | | 60.8 |
| | 5 Violent crime | N/A | 12.9 | | N/A | | | | | | | | | | | | | | 10.6 |
| | 6 Long term unemployment | N/A | 5.2 | | N/A | | | | | | | | | | | | | | 9.9 |
| 7 | 7 Smoking status at time of delivery | N/A | 15.1 | | N/A | | | | | | | | | | | | | | 12.7 |
| | 8 Breastfeeding initiation | N/A | 68.5 | | N/A | | | | | | | | | | | | | | 73.9 |
| | 9 Obese children (year 6) | - | 17.4 | | 16.9 | | | | | | | | | | | | | | 18.9 |
| | 10 Alcohol specific hospital stays <18 | N/A | 57.6 | | N/A | | | | | | | | | | | | | | 44.9 |
| | 11 Under 18 conceptions | N/A | 44.0 | | N/A | | | | | | | | | | | | | | 27.7 |
| 12 | 12 Smoking prevalence | N/A | 18.7 | | N/A | | | | | | | | | | | | | | 19.5 |
| | 13 % of physically active adults | N/A | 54.8 | | N/A | | | | | | | | | | | | | | 56.0 |
| | 14 Obese adults | N/A | 27.4 | | N/A | | | | | | | | | | | | | | 23.0 |
| | 15 Excess weight in adults | N/A | 70.7 | | N/A | | | | | | | | | | | | | | 63.8 |
| 16 | 16 Incidence of malignant melanoma | - | 12.0 | | 11.6 | | | | | | | | | | | | | | 14.8 |
| | 17 Hospital stays for self-harm | N/A | 169.9 | | N/A | | | | | | | | | | | | | | 188.0 |
| | 18 Hospital stays for alcohol related harm | N/A | 613 | | N/A | | | | | | | | | | | | | | 637 |
| | 19 Drug misuse | N/A | 5.9 | | N/A | | | | | | | | | | | | | | 8.6 |
| | 20 Recorded diabetes | - | 6.51 | | 6.09 | | | | | | | | | | | | | | 6.01 |
| | 21 Incidence of TB | N/A | 2.6 | | N/A | | | | | | | | | | | | | | 15.1 |
| | 22 Acute sexually transmitted infections | N/A | 627 | | N/A | | | | | | | | | | | | | | 804 |
| | 23 Hip fractures in people >65 | N/A | 680.0 | | N/A | | | | | | | | | | | | | | 568.1 |
| 24 | 24 Excess winter deaths | N/A | -3.0 | | N/A | | | | | | | | | | | | | | 16.5 |
| | 25 Life expectancy at birth (male) | - | 79.4 | | 78.8 | | | | | | | | | | | | | | 79.2 |
| | 26 Life expectancy at birth (female) | - | 83.0 | | 83.1 | | | | | | | | | | | | | | 83.0 |
| | 27 Infant mortality | - | 5.6 | | 5.9 | | | | | | | | | | | | | | 4.1 |
| | 28 Smoking related deaths | N/A | 259.3 | | N/A | | | | | | | | | | | | | | 291.9 |
| | 29 Suicide rate | N/A | * | | N/A | | | | | | | | | | | | | | 8.5 |
| | 30 Under 75 mortality rate: CV | N/A | 69.4 | | N/A | | | | | | | | | | | | | | 81.1 |
| | 31 Under 75 mortality rate: cancer | N/A | 147.2 | | N/A | | | | | | | | | | | | | | 146.5 |
| | 32 Killed and seriously injured on roads | - | 113 | | 13.1 | | | | | | | | | | | | | | 40.5 |

Lower Tier Local Authorities

Warwickshire

North Warwickshire

HEALTH PROFILE 2014 – Summary of changes

For a more detailed technical document for explanation of the purpose of this summary, the tartan rug display and indicator data

KEY: - No change
 ↑ Improvement ↓ Worsening

| Health Profile indicator (see technical document for further details) | | | 2014 | | 2013 | | 2014 ratings for lower tier local authorities in County area | | | | 2014 | | |
|---|---|---|-------|--------|-------|--------|--|--------|--------|--------|--------|-------|--------|
| | ↑ | ↓ | Value | Rating | Value | Rating | 1 | 2 | 3 | 4 | 5 | Value | Rating |
| 1 Deprivation | | | N/A | 5.1 | N/A | | Green | Green | Green | Green | Green | | 20.4 |
| 2 Children in poverty | | | N/A | 14.3 | N/A | | Green | Green | Green | Green | Green | | 20.6 |
| 3 Statutory homelessness | | | N/A | 0.0 | N/A | | Green | Green | Green | Green | Green | | 2.4 |
| 4 GCSE achieved | ↓ | - | 54.8 | Red | 56.6 | Orange | Red | Green | Green | Green | Green | Red | 60.8 |
| 5 Violent crime | | | N/A | 6.5 | N/A | | Green | Green | Green | Green | Green | | 10.6 |
| 6 Long term unemployment | | | N/A | 4.5 | N/A | | Green | Green | Green | Green | Green | | 9.9 |
| 7 Smoking status at time of delivery | | | N/A | 17.6 | N/A | | Red | Red | Red | Red | Red | | 12.7 |
| 8 Breastfeeding initiation | | | N/A | 71.9 | N/A | | Orange | Orange | Orange | Orange | Orange | | 73.9 |
| 9 Obese children (year 6) | - | - | 17.5 | Orange | 18.7 | Orange | Green | Green | Green | Green | Green | | 18.9 |
| 10 Alcohol specific hospital stays <18 | | | N/A | 40.1 | N/A | | Red | Orange | Orange | Orange | Orange | | 44.9 |
| 11 Under 18 conceptions | | | N/A | 29.0 | N/A | | Red | Orange | Green | Green | Green | Red | 27.7 |
| 12 Smoking prevalence | | | N/A | 10.4 | N/A | | Green | Orange | Orange | Orange | Orange | | 19.5 |
| 13 % of physically active adults | | | N/A | 56.6 | N/A | | Orange | Orange | Orange | Orange | Orange | | 56.0 |
| 14 Obese adults | | | N/A | 27.5 | N/A | | Red | Orange | Green | Green | Green | | 23.0 |
| 15 Excess weight in adults | | | N/A | 67.9 | N/A | | Orange | Orange | Orange | Orange | Orange | | 63.8 |
| 16 Incidence of malignant melanoma | ↓ | - | 10.0 | Orange | 6.6 | Green | Green | Green | Green | Green | Green | | 14.8 |
| 17 Hospital stays for self-harm | | | N/A | 189.9 | N/A | | Red | Red | Green | Green | Green | Red | 188.0 |
| 18 Hospital stays for alcohol related harm | | | N/A | 484 | N/A | | Green | Green | Green | Green | Green | | 637 |
| 19 Drug misuse | | | N/A | 4.6 | N/A | | Green | Green | Green | Green | Green | | 8.6 |
| 20 Recorded diabetes | - | - | 6.19 | Orange | 5.91 | Orange | Red | Green | Green | Green | Green | | 6.01 |
| 21 Incidence of TB | | | N/A | 6.5 | N/A | | Orange | Orange | Orange | Orange | Orange | | 15.1 |
| 22 Acute sexually transmitted infections | | | N/A | 507 | N/A | | Green | Green | Green | Green | Green | | 804 |
| 23 Hip fractures in people >65 | | | N/A | 6213 | N/A | | Orange | Orange | Orange | Orange | Orange | | 568.1 |
| 24 Excess winter deaths | | | N/A | 219 | N/A | | Orange | Orange | Orange | Orange | Orange | | 16.5 |
| 25 Life expectancy at birth (male) | - | - | 78.7 | Orange | 78.3 | Orange | Red | Green | Green | Green | Green | | 79.2 |
| 26 Life expectancy at birth (female) | - | - | 82.3 | Orange | 82.2 | Orange | Green | Green | Green | Green | Green | | 83.0 |
| 27 Infant mortality | - | - | 6.4 | Orange | 7.7 | Orange | Orange | Orange | Orange | Orange | Orange | Red | 4.1 |
| 28 Smoking related deaths | | | N/A | 265.9 | N/A | | Orange | Green | Green | Green | Green | | 291.9 |
| 29 Suicide rate | | | N/A | * | N/A | | Orange | Orange | Red | Orange | Orange | | 8.5 |
| 30 Under 75 mortality rate: CV | | | N/A | 85.8 | N/A | | Orange | Orange | Green | Green | Green | Red | 81.1 |
| 31 Under 75 mortality rate: cancer | | | N/A | 138.0 | N/A | | Orange | Orange | Green | Green | Green | Red | 146.5 |
| 32 Killed and seriously injured on roads | - | - | 99.9 | Red | 91.8 | Red | Green | Red | Red | Orange | Red | Green | 40.5 |

Nuneaton and Bedworth HEALTH PROFILE 2014 – Summary of changes

For a technical document for explanation of the purpose of this summary, the tartan rug display and indicator data

| KEY: | | | 2014 | | 2013 | | 2014 ratings for lower tier local authorities in County area | | | | 2014 | |
|---|--|-----|--------------|--|------------|--|--|--|--|--|------|-------|
| | | | ↑Improvement | | ↓Worsening | | | | | | | |
| Health Profile indicator (see technical document for further details) | | | | | | | | | | | | |
| 1 | 1 Deprivation | N/A | 19.2 | | N/A | | | | | | | 20.4 |
| | 2 Children in poverty | N/A | 20.1 | | N/A | | | | | | | 20.6 |
| | 3 Statutory homelessness | N/A | 0.3 | | N/A | | | | | | | 2.4 |
| | 4 GCSE achieved | - | 57.3 | | 53.8 | | | | | | | 60.8 |
| | 5 Violent crime | N/A | 10.1 | | N/A | | | | | | | 10.6 |
| | 6 Long term unemployment | N/A | 9.8 | | N/A | | | | | | | 9.9 |
| 7 | 7 Smoking status at time of delivery | N/A | 17.6 | | N/A | | | | | | | 12.7 |
| | 8 Breastfeeding initiation | N/A | 71.9 | | N/A | | | | | | | 73.9 |
| | 9 Obese children (year 6) | - | 20.8 | | 19.9 | | | | | | | 18.9 |
| | 10 Alcohol specific hospital stays <18 | N/A | 61.1 | | N/A | | | | | | | 44.9 |
| 11 | 11 Under 18 conceptions | N/A | 38.4 | | N/A | | | | | | | 27.7 |
| | 12 Smoking prevalence | N/A | 19.8 | | N/A | | | | | | | 19.5 |
| | 13 % of physically active adults | N/A | 52.8 | | N/A | | | | | | | 56.0 |
| | 14 Obese adults | N/A | 27.0 | | N/A | | | | | | | 23.0 |
| 15 | 15 Excess weight in adults | N/A | 64.5 | | N/A | | | | | | | 63.8 |
| | 16 Incidence of malignant melanoma | ↓ | 11.7 | | 10.8 | | | | | | | 14.8 |
| | 17 Hospital stays for self-harm | N/A | 2716 | | N/A | | | | | | | 188.0 |
| | 18 Hospital stays for alcohol related harm | N/A | 645 | | N/A | | | | | | | 637 |
| | 19 Drug misuse | N/A | 6.5 | | N/A | | | | | | | 8.6 |
| | 20 Recorded diabetes | - | 7.00 | | 6.66 | | | | | | | 6.01 |
| | 21 Incidence of TB | N/A | 10.4 | | N/A | | | | | | | 15.1 |
| | 22 Acute sexually transmitted infections | N/A | 825 | | N/A | | | | | | | 804 |
| 23 | 23 Hip fractures in people >65 | N/A | 615.1 | | N/A | | | | | | | 568.1 |
| | 24 Excess winter deaths | N/A | 18.5 | | N/A | | | | | | | 16.5 |
| | 25 Life expectancy at birth (male) | - | 78.2 | | 77.7 | | | | | | | 79.2 |
| | 26 Life expectancy at birth (female) | ↑ | 82.6 | | 82.2 | | | | | | | 83.0 |
| | 27 Infant mortality | - | 3.9 | | 4.3 | | | | | | | 4.1 |
| | 28 Smoking related deaths | N/A | 289.1 | | N/A | | | | | | | 291.9 |
| | 29 Suicide rate | N/A | 9.1 | | N/A | | | | | | | 8.5 |
| | 30 Under 75 mortality rate: CV | N/A | 89.8 | | N/A | | | | | | | 81.1 |
| | 31 Under 75 mortality rate: cancer | N/A | 140.9 | | N/A | | | | | | | 146.5 |
| | 32 Killed and seriously injured on roads | ↑ | 34.0 | | 38.7 | | | | | | | 40.5 |

Rugby

HEALTH PROFILE 2014 – Summary of changes

For a technical document for explanation of the purpose of this summary, the tartan rug display and indicator data

| Health Profile indicator (see technical document for further details) | | 2014 | | 2013 | | 2014 ratings for lower tier local authorities in County area | | | | 2014 | | |
|---|--|-------|--------|-------|--------|--|---|---|---|------|---|-------|
| | | Value | Change | Value | Change | 1 | 2 | 3 | 4 | 5 | 6 | |
| 1 | 1 Deprivation | N/A | | 3.6 | | N/A | | | | | | 20.4 |
| | 2 Children in poverty | N/A | | 13.7 | | N/A | | | | | | 20.6 |
| | 3 Statutory homelessness | N/A | | 0.3 | | N/A | | | | | | 2.4 |
| | 4 GCSE achieved | - | - | 69.2 | | 65.7 | | | | | | 60.8 |
| | 5 Violent crime | N/A | | 7.7 | | N/A | | | | | | 10.6 |
| | 6 Long term unemployment | N/A | | 4.3 | | N/A | | | | | | 9.9 |
| 2 | 7 Smoking status at time of delivery | N/A | | 17.6 | | N/A | | | | | | 12.7 |
| | 8 Breastfeeding initiation | N/A | | 71.9 | | N/A | | | | | | 73.9 |
| | 9 Obese children (year 6) | ↓ | - | 16.7 | | 16.5 | | | | | | 18.9 |
| | 10 Alcohol specific hospital stays <18 | N/A | | 30.2 | | N/A | | | | | | 44.9 |
| 3 | 11 Under 18 conceptions | N/A | | 20.8 | | N/A | | | | | | 27.7 |
| | 12 Smoking prevalence | N/A | | 16.9 | | N/A | | | | | | 19.5 |
| | 13 % of physically active adults | N/A | | 54.0 | | N/A | | | | | | 56.0 |
| | 14 Obese adults | N/A | | 20.4 | | N/A | | | | | | 23.0 |
| 4 | 15 Excess weight in adults | N/A | | 65.3 | | N/A | | | | | | 63.8 |
| | 16 Incidence of malignant melanoma | ↑ | - | 9.1 | | 14.2 | | | | | | 14.8 |
| | 17 Hospital stays for self-harm | N/A | | 269.4 | | N/A | | | | | | 188.0 |
| | 18 Hospital stays for alcohol related harm | N/A | | 62.7 | | N/A | | | | | | 63.7 |
| | 19 Drug misuse | N/A | | 6.8 | | N/A | | | | | | 8.6 |
| | 20 Recorded diabetes | - | - | 5.72 | | 5.44 | | | | | | 6.01 |
| | 21 Incidence of TB | N/A | | 11.0 | | N/A | | | | | | 15.1 |
| | 22 Acute sexually transmitted infections | N/A | | 694 | | N/A | | | | | | 804 |
| 5 | 23 Hip fractures in people >65 | N/A | | 664.4 | | N/A | | | | | | 568.1 |
| | 24 Excess winter deaths | N/A | | 18.8 | | N/A | | | | | | 16.5 |
| | 25 Life expectancy at birth (male) | ↑ | - | 80.2 | | 79.6 | | | | | | 79.2 |
| | 26 Life expectancy at birth (female) | - | - | 83.7 | | 83.5 | | | | | | 83.0 |
| | 27 Infant mortality | - | - | 3.5 | | 6.2 | | | | | | 4.1 |
| | 28 Smoking related deaths | N/A | | 232.5 | | N/A | | | | | | 291.9 |
| | 29 Suicide rate | N/A | | * | | N/A | | | | | | 8.5 |
| | 30 Under 75 mortality rate: CV | N/A | | 70.0 | | N/A | | | | | | 81.1 |
| 6 | 31 Under 75 mortality rate: cancer | N/A | | 139.6 | | N/A | | | | | | 146.5 |
| | 32 Killed and seriously injured on roads | - | - | 59.0 | | 64.0 | | | | | | 40.5 |

Stratford-on-Avon

HEALTH PROFILE 2014 – Summary of changes

For a technical document for explanation of the purpose of this summary, the tartan rug display and indicator data

| Health Profile indicator (see technical document for further details) | | 2014 | | 2013 | | 2014 ratings for lower tier local authorities in County area | | | | 2014 | | |
|---|--|-------|--------|-------|--------|--|---|---|---|------|---|-------|
| | | Value | Change | Value | Change | 1 | 2 | 3 | 4 | 5 | 6 | |
| 1-6 | 1 Deprivation | N/A | | 0.0 | | | | | | | | 20.4 |
| | 2 Children in poverty | N/A | | 10.1 | | | | | | | | 20.6 |
| | 3 Statutory homelessness | N/A | | 0.5 | | | | | | | | 2.4 |
| | 4 GCSE achieved | - | ↓ | 72.1 | | 69.4 | | | | | | 60.8 |
| | 5 Violent crime | N/A | | 5.4 | | N/A | | | | | | 10.6 |
| | 6 Long term unemployment | N/A | | 15 | | N/A | | | | | | 9.9 |
| 7-11 | 7 Smoking status at time of delivery | N/A | | 17.6 | | N/A | | | | | | 12.7 |
| | 8 Breastfeeding initiation | N/A | | 71.9 | | N/A | | | | | | 73.9 |
| | 9 Obese children (year 6) | - | ↓ | 13.6 | | 14.3 | | | | | | 18.9 |
| | 10 Alcohol specific hospital stays <18 | N/A | | 51.4 | | N/A | | | | | | 44.9 |
| | 11 Under 18 conceptions | N/A | | 16.2 | | N/A | | | | | | 27.7 |
| 12-15 | 12 Smoking prevalence | N/A | | 19.8 | | N/A | | | | | | 19.5 |
| | 13 % of physically active adults | N/A | | 58.4 | | N/A | | | | | | 56.0 |
| | 14 Obese adults | N/A | | 21.4 | | N/A | | | | | | 23.0 |
| | 15 Excess weight in adults | N/A | | 65.7 | | N/A | | | | | | 63.8 |
| 16-23 | 16 Incidence of malignant melanoma | - | ↓ | 15.5 | | 18.1 | | | | | | 14.8 |
| | 17 Hospital stays for self-harm | N/A | | 114.2 | | N/A | | | | | | 188.0 |
| | 18 Hospital stays for alcohol related harm | N/A | | 518 | | N/A | | | | | | 637 |
| | 19 Drug misuse | N/A | | 3.3 | | N/A | | | | | | 8.6 |
| | 20 Recorded diabetes | - | ↓ | 5.06 | | 4.85 | | | | | | 6.01 |
| | 21 Incidence of TB | N/A | | 4.1 | | N/A | | | | | | 15.1 |
| | 22 Acute sexually transmitted infections | N/A | | 456 | | N/A | | | | | | 804 |
| | 23 Hip fractures in people >65 | N/A | | 507.3 | | N/A | | | | | | 568.1 |
| 24-32 | 24 Excess winter deaths | N/A | | 17.3 | | N/A | | | | | | 16.5 |
| | 25 Life expectancy at birth (male) | - | ↓ | 81.0 | | 80.7 | | | | | | 79.2 |
| | 26 Life expectancy at birth (female) | - | ↓ | 84.9 | | 84.5 | | | | | | 83.0 |
| | 27 Infant mortality | - | ↓ | 3.8 | | 4.7 | | | | | | 4.1 |
| | 28 Smoking related deaths | N/A | | 202.2 | | N/A | | | | | | 291.9 |
| | 29 Suicide rate | N/A | | 8.3 | | N/A | | | | | | 8.5 |
| | 30 Under 75 mortality rate: CV | N/A | | 55.1 | | N/A | | | | | | 81.1 |
| | 31 Under 75 mortality rate: cancer | N/A | | 113.6 | | N/A | | | | | | 146.5 |
| | 32 Killed and seriously injured on roads | - | ↓ | 74.2 | | 70.2 | | | | | | 40.5 |

Warwick

HEALTH PROFILE 2014 – Summary of changes

For a technical document for explanation of the purpose of this summary, the tartan rug display and indicator data

| Health Profile indicator (see technical document for further details) | | 2014 | | 2013 | | 2014 ratings for lower tier local authorities in County area | | | | 2014 | | |
|---|--|-------|--------|--------|--------|--|--------|--------|--------|--------|--------|-------|
| | | Value | Rating | Value | Rating | 1 | 2 | 3 | 4 | 5 | 6 | |
| 1 | 1 Deprivation | N/A | 10 | Green | N/A | Green | Green | Green | Green | Green | Green | 20.4 |
| | 2 Children in poverty | N/A | 11.4 | Green | N/A | Green | Orange | Green | Green | Green | Green | 20.6 |
| | 3 Statutory homelessness | N/A | 0.3 | Green | N/A | Green | Green | Green | Green | Green | Green | 2.4 |
| | 4 GCSE achieved | - | 69.3 | Green | 68.3 | Green | Red | Red | Green | Green | Red | 60.8 |
| | 5 Violent crime | N/A | 7.9 | Green | N/A | Green | Orange | Green | Green | Green | Green | 10.6 |
| | 6 Long term unemployment | N/A | 3.9 | Green | N/A | Green | Orange | Green | Green | Green | Green | 9.9 |
| 2 | 7 Smoking status at time of delivery | N/A | 17.6 | Red | N/A | Red | Red | Red | Red | Red | Red | 12.7 |
| | 8 Breastfeeding initiation | N/A | 71.9 | Orange | N/A | Orange | Orange | Orange | Orange | Orange | Orange | 73.9 |
| | 9 Obese children (year 6) | ↑ | 13.5 | Green | 17.6 | Orange | Orange | Green | Green | Green | Green | 18.9 |
| | 10 Alcohol specific hospital stays <18 | N/A | 42.7 | Orange | N/A | Orange | Red | Orange | Orange | Orange | Orange | 44.9 |
| | 11 Under 18 conceptions | N/A | 17.1 | Green | N/A | Orange | Red | Orange | Green | Green | Red | 27.7 |
| 3 | 12 Smoking prevalence | N/A | 18.6 | Orange | N/A | Orange | Orange | Orange | Orange | Orange | Green | 19.5 |
| | 13 % of physically active adults | N/A | 55.3 | Orange | N/A | Orange | Orange | Orange | Orange | Orange | Red | 56.0 |
| | 14 Obese adults | N/A | 15.8 | Green | N/A | Red | Orange | Orange | Orange | Orange | Red | 23.0 |
| | 15 Excess weight in adults | N/A | 62.7 | Orange | N/A | Orange | Orange | Orange | Orange | Orange | Red | 63.8 |
| 4 | 16 Incidence of malignant melanoma | - | 17.7 | Orange | 16.4 | Orange | Orange | Green | Orange | Orange | Green | 14.8 |
| | 17 Hospital stays for self-harm | N/A | 151.3 | Green | N/A | Orange | Red | Red | Green | Orange | Red | 188.0 |
| | 18 Hospital stays for alcohol related harm | N/A | 58.0 | Green | N/A | Green | Orange | Orange | Green | Green | Red | 63.7 |
| | 19 Drug misuse | N/A | 8.4 | Orange | N/A | Green | Green | Green | Green | Green | Red | 8.6 |
| | 20 Recorded diabetes | - | 4.96 | Green | 4.78 | Green | Orange | Red | Green | Green | Red | 6.01 |
| | 21 Incidence of TB | N/A | 10.2 | Orange | N/A | Orange | Orange | Orange | Orange | Orange | Red | 15.1 |
| | 22 Acute sexually transmitted infections | N/A | 54.4 | Green | N/A | Green | Green | Green | Green | Green | Green | 80.4 |
| | 23 Hip fractures in people >65 | N/A | 451.8 | Green | N/A | Orange | Orange | Orange | Orange | Orange | Red | 568.1 |
| 5 | 24 Excess winter deaths | N/A | 16.1 | Orange | N/A | Orange | Orange | Orange | Orange | Orange | Orange | 16.5 |
| | 25 Life expectancy at birth (male) | - | 80.4 | Green | 80.3 | Green | Orange | Red | Green | Green | Red | 79.2 |
| | 26 Life expectancy at birth (female) | - | 84.7 | Green | 84.5 | Green | Orange | Orange | Green | Green | Red | 83.0 |
| | 27 Infant mortality | - | 3.6 | Orange | 3.8 | Orange | Orange | Orange | Orange | Orange | Red | 4.1 |
| | 28 Smoking related deaths | N/A | 233.1 | Green | N/A | Orange | Orange | Green | Green | Green | Green | 291.9 |
| | 29 Suicide rate | N/A | 13.2 | Red | N/A | Orange | Orange | Orange | Orange | Orange | Orange | 8.5 |
| | 30 Under 75 mortality rate: CV | N/A | 65.7 | Green | N/A | Orange | Orange | Orange | Green | Green | Red | 81.1 |
| | 31 Under 75 mortality rate: cancer | N/A | 129.8 | Green | N/A | Orange | Orange | Orange | Green | Green | Red | 146.5 |
| | 32 Killed and seriously injured on roads | - | 36.8 | Orange | 39.3 | Orange | Red | Green | Red | Red | Red | 40.5 |

Lower Tier Local Authorities

Worcestershire

Bromsgrove

HEALTH PROFILE 2014 – Summary of changes

See technical document for explanation of the purpose of this summary, the tartan rug display and indicator details

| Health Profile indicator (see technical document for further details) | | 2014 | | 2013 | | 2014 ratings for lower tier local authorities in County area | | | | | 2014 | | |
|---|--|-------|--------|-------|--------|--|---|---|---|---|------|---|-------|
| | | Value | Change | Value | Change | 1 | 2 | 3 | 4 | 5 | 6 | 7 | |
| 1 | 1 Deprivation | N/A | 0.0 | | N/A | | | | | | | | 20.4 |
| | 2 Children in poverty | N/A | 9.7 | | N/A | | | | | | | | 20.6 |
| | 3 Statutory homelessness | N/A | 0.9 | | N/A | | | | | | | | 2.4 |
| | 4 GCSE achieved | ■ | 68.9 | ■ | 66.2 | | | | | | | | 60.8 |
| | 5 Violent crime | N/A | 7.0 | | N/A | | | | | | | | 10.6 |
| | 6 Long term unemployment | N/A | 4.8 | | N/A | | | | | | | | 9.9 |
| 2 | 7 Smoking status at time of delivery | N/A | 13.8 | | N/A | | | | | | | | 12.7 |
| | 8 Breastfeeding initiation | N/A | 72.7 | | N/A | | | | | | | | 73.9 |
| | 9 Obese children (year 6) | ▲ | 14.9 | ■ | 17.5 | | | | | | | | 18.9 |
| | 10 Alcohol specific hospital stays <18 | N/A | 49.1 | | N/A | | | | | | | | 44.9 |
| | 11 Under 18 conceptions | N/A | 19.0 | | N/A | | | | | | | | 27.7 |
| 3 | 12 Smoking prevalence | N/A | 13.5 | | N/A | | | | | | | | 19.5 |
| | 13 % of physically active adults | N/A | 60.6 | | N/A | | | | | | | | 56.0 |
| | 14 Obese adults | N/A | 23.4 | | N/A | | | | | | | | 23.0 |
| | 15 Excess weight in adults | N/A | 64.9 | | N/A | | | | | | | | 63.8 |
| 4 | 16 Incidence of malignant melanoma | ■ | 17.2 | ■ | 18.5 | | | | | | | | 14.8 |
| | 17 Hospital stays for self-harm | N/A | 161.7 | | N/A | | | | | | | | 188.0 |
| | 18 Hospital stays for alcohol related harm | N/A | 538 | | N/A | | | | | | | | 637 |
| | 19 Drug misuse | N/A | 2.3 | | N/A | | | | | | | | 8.6 |
| | 20 Recorded diabetes | ■ | 5.73 | ▼ | 5.32 | | | | | | | | 6.01 |
| | 21 Incidence of TB | N/A | 1.1 | | N/A | | | | | | | | 15.1 |
| | 22 Acute sexually transmitted infections | N/A | 542 | | N/A | | | | | | | | 804 |
| | 23 Hip fractures in people >65 | N/A | 565.2 | | N/A | | | | | | | | 568.1 |
| 5 | 24 Excess winter deaths | N/A | 27.7 | | N/A | | | | | | | | 16.5 |
| | 25 Life expectancy at birth (male) | ■ | 80.4 | ■ | 80.7 | | | | | | | | 79.2 |
| | 26 Life expectancy at birth (female) | ■ | 83.5 | ■ | 83.1 | | | | | | | | 83.0 |
| | 27 Infant mortality | ■ | 2.2 | ■ | 4.1 | | | | | | | | 4.1 |
| | 28 Smoking related deaths | N/A | 210.9 | | N/A | | | | | | | | 291.9 |
| | 29 Suicide rate | N/A | * | * | N/A | | | | | | | | 8.5 |
| | 30 Under 75 mortality rate: CV | N/A | 71.8 | | N/A | | | | | | | | 81.1 |
| | 31 Under 75 mortality rate: cancer | N/A | 128.1 | | N/A | | | | | | | | 146.5 |
| | 32 Killed and seriously injured on roads | ■ | 24.5 | ■ | 24.6 | | | | | | | | 40.5 |

Malvern Hills

HEALTH PROFILE 2014 – Summary of changes

See technical document for explanation of the purpose of this summary, the tartan rug display and indicator details

KEY: -No change
 ↑Improvement ↓Worsening

| Health Profile indicator (see technical document for further details) | 2014 | 2013 | 2014 ratings for lower tier local authorities in County area | | | | | 2014 | |
|---|------|-------|--|---|---|---|---|------|-------|
| | | | 1 | 2 | 3 | 4 | 5 | | |
| 1 Deprivation | N/A | 2.1 | | | | | | | 20.4 |
| 2 Children in poverty | N/A | 14.1 | | | | | | | 20.6 |
| 3 Statutory homelessness | N/A | 0.0 | | | | | | | 2.4 |
| 4 GCSE achieved | ■ ■ | 60.1 | ■ | ■ | ■ | ■ | ■ | ■ | 60.8 |
| 5 Violent crime | N/A | 6.4 | | | | | | | 10.6 |
| 6 Long term unemployment | N/A | 4.4 | | | | | | | 9.9 |
| 7 Smoking status at time of delivery | N/A | 13.8 | | | | | | | 12.7 |
| 8 Breastfeeding initiation | N/A | 72.7 | | | | | | | 73.9 |
| 9 Obese children (year 6) | ■ ■ | 15.5 | ■ | ■ | ■ | ■ | ■ | ■ | 18.9 |
| 10 Alcohol specific hospital stays <18 | N/A | 45.9 | | | | | | | 44.9 |
| 11 Under 18 conceptions | N/A | 22.1 | | | | | | | 27.7 |
| 12 Smoking prevalence | N/A | 13.9 | | | | | | | 19.5 |
| 13 % of physically active adults | N/A | 62.3 | | | | | | | 56.0 |
| 14 Obese adults | N/A | 16.6 | | | | | | | 23.0 |
| 15 Excess weight in adults | N/A | 60.3 | | | | | | | 63.8 |
| 16 Incidence of malignant melanoma | ■ ■ | 18.9 | ■ | ■ | ■ | ■ | ■ | ■ | 14.8 |
| 17 Hospital stays for self-harm | N/A | 203.2 | | | | | | | 188.0 |
| 18 Hospital stays for alcohol related harm | N/A | 600 | | | | | | | 637 |
| 19 Drug misuse | N/A | 5.4 | | | | | | | 8.6 |
| 20 Recorded diabetes | ■ ■ | 5.95 | ■ | ■ | ■ | ■ | ■ | ■ | 6.01 |
| 21 Incidence of TB | N/A | 2.7 | | | | | | | 15.1 |
| 22 Acute sexually transmitted infections | N/A | 383 | | | | | | | 804 |
| 23 Hip fractures in people >65 | N/A | 575.4 | | | | | | | 568.1 |
| 24 Excess winter deaths | N/A | 19.7 | | | | | | | 16.5 |
| 25 Life expectancy at birth (male) | ■ ■ | 80.4 | ■ | ■ | ■ | ■ | ■ | ■ | 79.2 |
| 26 Life expectancy at birth (female) | ■ ■ | 83.4 | ■ | ■ | ■ | ■ | ■ | ■ | 83.0 |
| 27 Infant mortality | ■ ■ | 3.1 | ■ | ■ | ■ | ■ | ■ | ■ | 4.1 |
| 28 Smoking related deaths | N/A | 215.5 | | | | | | | 291.9 |
| 29 Suicide rate | N/A | * * | | | | | | | 8.5 |
| 30 Under 75 mortality rate: CV | N/A | 74.1 | | | | | | | 81.1 |
| 31 Under 75 mortality rate: cancer | N/A | 125.0 | | | | | | | 146.5 |
| 32 Killed and seriously injured on roads | ↑ ■ | 31.7 | ■ | ■ | ■ | ■ | ■ | ■ | 40.5 |

Redditch

HEALTH PROFILE 2014 – Summary of changes

See technical document for explanation of the purpose of this summary, the tartan rug display and indicator details

KEY: -No change
 ↑Improvement ↓Worsening

| Health Profile indicator (see technical document for further details) | | | 2014 | | 2013 | | 2014 ratings for lower tier local authorities in County area | | | | | 2014 | | |
|---|--|-----|-------|--|------|--|--|--|--|--|--|------|--|-------|
| | | | | | | | | | | | | | | |
| 1 | 1 Deprivation | N/A | 24.8 | | N/A | | | | | | | | | 20.4 |
| | 2 Children in poverty | N/A | 18.9 | | N/A | | | | | | | | | 20.6 |
| | 3 Statutory homelessness | N/A | 0.4 | | N/A | | | | | | | | | 2.4 |
| | 4 GCSE achieved | ■ | 68.0 | | 64.1 | | | | | | | | | 60.8 |
| | 5 Violent crime | N/A | 13.9 | | N/A | | | | | | | | | 10.6 |
| | 6 Long term unemployment | N/A | 7.7 | | N/A | | | | | | | | | 9.9 |
| 7 | 7 Smoking status at time of delivery | N/A | 13.8 | | N/A | | | | | | | | | 12.7 |
| | 8 Breastfeeding initiation | N/A | 72.7 | | N/A | | | | | | | | | 73.9 |
| | 9 Obese children (year 6) | ■ | 17.7 | | 17.1 | | | | | | | | | 18.9 |
| | 10 Alcohol specific hospital stays <18 | N/A | 83.8 | | N/A | | | | | | | | | 44.9 |
| | 11 Under 18 conceptions | N/A | 34.5 | | N/A | | | | | | | | | 27.7 |
| 12 | 12 Smoking prevalence | N/A | 24.9 | | N/A | | | | | | | | | 19.5 |
| | 13 % of physically active adults | N/A | 53.7 | | N/A | | | | | | | | | 56.0 |
| | 14 Obese adults | N/A | 22.9 | | N/A | | | | | | | | | 23.0 |
| | 15 Excess weight in adults | N/A | 65.9 | | N/A | | | | | | | | | 63.8 |
| 16 | 16 Incidence of malignant melanoma | ■ | 14.4 | | 14.0 | | | | | | | | | 14.8 |
| | 17 Hospital stays for self-harm | N/A | 252.6 | | N/A | | | | | | | | | 188.0 |
| | 18 Hospital stays for alcohol related harm | N/A | 628 | | N/A | | | | | | | | | 637 |
| | 19 Drug misuse | N/A | 5.8 | | N/A | | | | | | | | | 8.6 |
| | 20 Recorded diabetes | ↓ | 6.31 | | 5.82 | | | | | | | | | 6.01 |
| | 21 Incidence of TB | N/A | 13.1 | | N/A | | | | | | | | | 15.1 |
| | 22 Acute sexually transmitted infections | N/A | 640 | | N/A | | | | | | | | | 804 |
| | 23 Hip fractures in people >65 | N/A | 685.5 | | N/A | | | | | | | | | 568.1 |
| 24 | 24 Excess winter deaths | N/A | 8.4 | | N/A | | | | | | | | | 16.5 |
| | 25 Life expectancy at birth (male) | ■ | 78.9 | | 78.7 | | | | | | | | | 79.2 |
| | 26 Life expectancy at birth (female) | ■ | 82.9 | | 82.8 | | | | | | | | | 83.0 |
| | 27 Infant mortality | ■ | 4.3 | | 3.8 | | | | | | | | | 4.1 |
| | 28 Smoking related deaths | N/A | 297.1 | | N/A | | | | | | | | | 291.9 |
| | 29 Suicide rate | N/A | 12.1 | | N/A | | | | | | | | | 8.5 |
| | 30 Under 75 mortality rate: CV | N/A | 79.9 | | N/A | | | | | | | | | 81.1 |
| | 31 Under 75 mortality rate: cancer | N/A | 142.7 | | N/A | | | | | | | | | 146.5 |
| | 32 Killed and seriously injured on roads | ■ | 17.8 | | 17.2 | | | | | | | | | 40.5 |

Worcester

HEALTH PROFILE 2014 – Summary of changes

See technical document for explanation of the purpose of this summary, the tartan rug display and indicator details

KEY: -No change
 ↑Improvement ↓Worsening

| | | | 2014 | | 2013 | | 2014 ratings for lower tier local authorities in County area | | | | | 2014 | | |
|--|--|--|-------|-------|------|------|--|--|--|--|--|------|-------|------|
| Health Profile indicator (see technical document for further details) | | | | | | | | | | | | | | |
| 1 | 1 Deprivation | N/A | 17.1 | | N/A | | | | | | | | 20.4 | |
| | 2 Children in poverty | N/A | 18.4 | | N/A | | | | | | | | 20.6 | |
| | 3 Statutory homelessness | N/A | 1.4 | | N/A | | | | | | | | 2.4 | |
| | 4 GCSE achieved | ↑ - | 61.0 | | 55.8 | | | | | | | | 60.8 | |
| | 5 Violent crime | N/A | 13.9 | | N/A | | | | | | | | 10.6 | |
| | 6 Long term unemployment | N/A | 8.1 | | N/A | | | | | | | | 9.9 | |
| 7 | 7 Smoking status at time of delivery | N/A | 13.8 | | N/A | | | | | | | | 12.7 | |
| | 8 Breastfeeding initiation | N/A | 72.7 | | N/A | | | | | | | | 73.9 | |
| | 9 Obese children (year 6) | - - | 17.0 | | 19.0 | | | | | | | | 18.9 | |
| | 10 Alcohol specific hospital stays <18 | N/A | 54.5 | | N/A | | | | | | | | 44.9 | |
| 11 | 11 Under 18 conceptions | N/A | 43.1 | | N/A | | | | | | | | 27.7 | |
| 12 | 12 Smoking prevalence | N/A | 21.4 | | N/A | | | | | | | | 19.5 | |
| | 13 % of physically active adults | N/A | 57.1 | | N/A | | | | | | | | 56.0 | |
| | 14 Obese adults | N/A | 24.2 | | N/A | | | | | | | | 23.0 | |
| | 15 Excess weight in adults | N/A | 65.3 | | N/A | | | | | | | | 63.8 | |
| 16 | 16 Incidence of malignant melanoma | - - | 19.1 | | 16.8 | | | | | | | | 14.8 | |
| | 17 Hospital stays for self-harm | N/A | 223.9 | | N/A | | | | | | | | 188.0 | |
| | 18 Hospital stays for alcohol related harm | N/A | 666 | | N/A | | | | | | | | 637 | |
| | 19 Drug misuse | N/A | 14.1 | | N/A | | | | | | | | 8.6 | |
| | 20 Recorded diabetes | - - | 6.11 | | 5.85 | | | | | | | | 6.01 | |
| | 21 | 21 Incidence of TB | N/A | 5.1 | | N/A | | | | | | | | 15.1 |
| | 22 | 22 Acute sexually transmitted infections | N/A | 701 | | N/A | | | | | | | | 804 |
| 23 | 23 Hip fractures in people >65 | N/A | 542.2 | | N/A | | | | | | | | 568.1 | |
| 24 | 24 Excess winter deaths | N/A | 18.5 | | N/A | | | | | | | | 16.5 | |
| | 25 Life expectancy at birth (male) | - - | 78.8 | | 78.6 | | | | | | | | 79.2 | |
| | 26 Life expectancy at birth (female) | - - | 83.3 | | 83.2 | | | | | | | | 83.0 | |
| | 27 | 27 Infant mortality | - - | 2.9 | | 3.9 | | | | | | | 4.1 | |
| | 28 | 28 Smoking related deaths | N/A | 294.2 | | N/A | | | | | | | 291.9 | |
| | 29 | 29 Suicide rate | N/A | 12.5 | | N/A | | | | | | | 8.5 | |
| | 30 | 30 Under 75 mortality rate: CV | N/A | 88.4 | | N/A | | | | | | | 81.1 | |
| | 31 | 31 Under 75 mortality rate: cancer | N/A | 139.6 | | N/A | | | | | | | 146.5 | |
| | 32 | 32 Killed and seriously injured on roads | - - | 19.9 | | 18.1 | | | | | | | 40.5 | |

Wychavon

HEALTH PROFILE 2014 – Summary of changes

See technical document for explanation of the purpose of this summary, the tartan rug display and indicator details

KEY: -No change
 ↑Improvement ↓Worsening

| | | | 2014 | | 2013 | | 2014 ratings for lower tier local authorities in County area | | | | | | 2014 | | |
|--|--|-----|-------|--|------|--|--|--|--|--|--|--|------|--|-------|
| Health Profile indicator (see technical document for further details) | | | | | | | | | | | | | | | |
| 1 | 1 Deprivation | N/A | 0.0 | | N/A | | | | | | | | | | 20.4 |
| | 2 Children in poverty | N/A | 12.8 | | N/A | | | | | | | | | | 20.6 |
| | 3 Statutory homelessness | N/A | 0.2 | | N/A | | | | | | | | | | 2.4 |
| | 4 GCSE achieved | ■ | 58.1 | | 57.8 | | | | | | | | | | 60.8 |
| | 5 Violent crime | N/A | 6.5 | | N/A | | | | | | | | | | 10.6 |
| | 6 Long term unemployment | N/A | 4.6 | | N/A | | | | | | | | | | 9.9 |
| 7 | 7 Smoking status at time of delivery | N/A | 13.8 | | N/A | | | | | | | | | | 12.7 |
| | 8 Breastfeeding initiation | N/A | 72.7 | | N/A | | | | | | | | | | 73.9 |
| | 9 Obese children (year 6) | ■ | 18.7 | | 18.8 | | | | | | | | | | 18.9 |
| | 10 Alcohol specific hospital stays <18 | N/A | 42.4 | | N/A | | | | | | | | | | 44.9 |
| | 11 Under 18 conceptions | N/A | 216 | | N/A | | | | | | | | | | 27.7 |
| 12 | 12 Smoking prevalence | N/A | 16.7 | | N/A | | | | | | | | | | 19.5 |
| | 13 % of physically active adults | N/A | 60.1 | | N/A | | | | | | | | | | 56.0 |
| | 14 Obese adults | N/A | 27.6 | | N/A | | | | | | | | | | 23.0 |
| | 15 Excess weight in adults | N/A | 70.8 | | N/A | | | | | | | | | | 63.8 |
| 16 | 16 Incidence of malignant melanoma | ■ | 15.9 | | 15.7 | | | | | | | | | | 14.8 |
| | 17 Hospital stays for self-harm | N/A | 188.1 | | N/A | | | | | | | | | | 188.0 |
| | 18 Hospital stays for alcohol related harm | N/A | 597 | | N/A | | | | | | | | | | 637 |
| | 19 Drug misuse | N/A | 5.8 | | N/A | | | | | | | | | | 8.6 |
| | 20 Recorded diabetes | ■ | 6.70 | | 6.46 | | | | | | | | | | 6.01 |
| | 21 Incidence of TB | N/A | 3.4 | | N/A | | | | | | | | | | 15.1 |
| | 22 Acute sexually transmitted infections | N/A | 468 | | N/A | | | | | | | | | | 804 |
| | 23 Hip fractures in people >65 | N/A | 514.6 | | N/A | | | | | | | | | | 568.1 |
| 24 | 24 Excess winter deaths | N/A | 16.1 | | N/A | | | | | | | | | | 16.5 |
| | 25 Life expectancy at birth (male) | ■ | 80.7 | | 80.8 | | | | | | | | | | 79.2 |
| | 26 Life expectancy at birth (female) | ■ | 84.6 | | 84.7 | | | | | | | | | | 83.0 |
| | 27 Infant mortality | ■ | 2.9 | | 3.3 | | | | | | | | | | 4.1 |
| | 28 Smoking related deaths | N/A | 242.2 | | N/A | | | | | | | | | | 2919 |
| | 29 Suicide rate | N/A | 8.3 | | N/A | | | | | | | | | | 8.5 |
| | 30 Under 75 mortality rate: CV | N/A | 60.5 | | N/A | | | | | | | | | | 81.1 |
| | 31 Under 75 mortality rate: cancer | N/A | 134.7 | | N/A | | | | | | | | | | 146.5 |
| | 32 Killed and seriously injured on roads | ■ | 43.6 | | 46.2 | | | | | | | | | | 40.5 |

Wyre Forest

HEALTH PROFILE 2014 – Summary of changes

See technical document for explanation of the purpose of this summary, the tartan rug display and indicator details

KEY: -No change
 ↑Improvement ↓Worsening

| | | | 2014 | | 2013 | | 2014 ratings for lower tier local authorities in County area | | | | | 2014 | |
|--|--|-------|-------|-----|------|---|--|--|--|--|--|-------|-------|
| Health Profile indicator (see technical document for further details) | | | | | | | | | | | | | |
| 1-6 | 1 Deprivation | N/A | 17.2 | | N/A | | | | | | | | 20.4 |
| | 2 Children in poverty | N/A | 19.8 | | N/A | | | | | | | | 20.6 |
| | 3 Statutory homelessness | N/A | 0.1 | | N/A | | | | | | | | 2.4 |
| | 4 GCSE achieved | ■ ■ | 58.2 | | 56.0 | | | | | | | | 60.8 |
| | 5 Violent crime | N/A | 13.3 | | N/A | | | | | | | | 10.6 |
| | 6 Long term unemployment | N/A | 8.2 | | N/A | | | | | | | | 9.9 |
| 7-11 | 7 Smoking status at time of delivery | N/A | 13.8 | | N/A | | | | | | | | 12.7 |
| | 8 Breastfeeding initiation | N/A | 72.7 | | N/A | | | | | | | | 73.9 |
| | 9 Obese children (year 6) | ■ ■ | 20.6 | | 20.2 | | | | | | | | 18.9 |
| | 10 Alcohol specific hospital stays <18 | N/A | 71.8 | | N/A | | | | | | | | 44.9 |
| | 11 Under 18 conceptions | N/A | 25.3 | | N/A | | | | | | | | 27.7 |
| 12-15 | 12 Smoking prevalence | N/A | 16.6 | | N/A | | | | | | | | 19.5 |
| | 13 % of physically active adults | N/A | 56.5 | | N/A | | | | | | | | 56.0 |
| | 14 Obese adults | N/A | 22.0 | | N/A | | | | | | | | 23.0 |
| | 15 Excess weight in adults | N/A | 63.5 | | N/A | | | | | | | | 63.8 |
| 16-23 | 16 Incidence of malignant melanoma | ■ ■ | 12.2 | | 11.2 | | | | | | | | 14.8 |
| | 17 Hospital stays for self-harm | N/A | 243.7 | | N/A | | | | | | | | 188.0 |
| | 18 Hospital stays for alcohol related harm | N/A | 620 | | N/A | | | | | | | | 637 |
| | 19 Drug misuse | N/A | 8.5 | | N/A | | | | | | | | 8.6 |
| | 20 Recorded diabetes | ■ ↓ | 6.65 | | 6.20 | | | | | | | | 6.01 |
| | 21 Incidence of TB | N/A | 10 | | N/A | | | | | | | | 15.1 |
| | 22 Acute sexually transmitted infections | N/A | 392 | | N/A | | | | | | | | 804 |
| 23 Hip fractures in people >65 | N/A | 596.3 | | N/A | | | | | | | | 568.1 | |
| 24-32 | 24 Excess winter deaths | N/A | 14.0 | | N/A | | | | | | | | 16.5 |
| | 25 Life expectancy at birth (male) | ■ ■ | 79.2 | | 78.7 | | | | | | | | 79.2 |
| | 26 Life expectancy at birth (female) | ■ ■ | 83.0 | | 82.9 | | | | | | | | 83.0 |
| | 27 Infant mortality | ■ ■ | 2.8 | | 2.8 | | | | | | | | 4.1 |
| | 28 Smoking related deaths | N/A | 247.6 | | N/A | | | | | | | | 291.9 |
| | 29 Suicide rate | N/A | * | * | N/A | * | * | | | | | | 8.5 |
| | 30 Under 75 mortality rate: CV | N/A | 77.1 | | N/A | | | | | | | | 81.1 |
| | 31 Under 75 mortality rate: cancer | N/A | 143.7 | | N/A | | | | | | | | 146.5 |
| | 32 Killed and seriously injured on roads | ↑ ■ | 31.6 | | 36.8 | | | | | | | | 40.5 |



Shropshire

Unitary Authority



This profile was produced on 8 July 2014

Health Profile 2014

Health in summary

The health of people in Shropshire is generally better than the England average. Deprivation is lower than average, however about 13.6% (6,700) children live in poverty. Life expectancy for both men and women is higher than the England average.

Living longer

Life expectancy is 5.3 years lower for men and 3.2 years lower for women in the most deprived areas of Shropshire than in the least deprived areas.

Child health

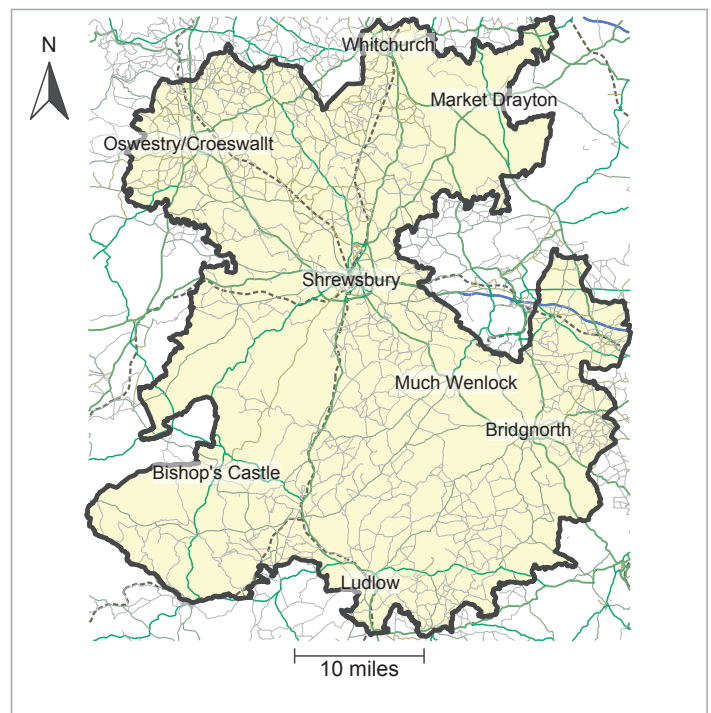
In Year 6, 19.2% (489) of children are classified as obese. The rate of alcohol-specific hospital stays among those under 18 was 41.1*. This represents 25 stays per year.

Adult health

In 2012, 23.4% of adults are classified as obese. The rate of alcohol related harm hospital stays was 568*, better than the average for England. This represents 1,810 stays per year. The rate of self-harm hospital stays was 150.7*, better than the average for England. This represents 441 stays per year. The rate of smoking related deaths was 269*, better than the average for England. This represents 534 deaths per year. Rates of hip fractures, sexually transmitted infections and TB are better than average. Rates of statutory homelessness, violent crime, long term unemployment, drug misuse, early deaths from cardiovascular diseases and early deaths from cancer are better than average.

Local priorities

Priorities in Shropshire include 'starting well' through a healthy child programme, 'living well' by tackling obesity and health inequalities, and 'ageing well' by prevention of long term conditions. For more information see shropshire.gov.uk



© Crown Copyright and database rights 2014, Ordnance Survey 100016969
OpenStreetMap contributors ODbL

Population: 308,000

Mid-2012 population estimate. Source: Office for National Statistics.

This profile gives a picture of people's health in Shropshire. It is designed to help local government and health services understand their community's needs, so that they can work to improve people's health and reduce health inequalities.

Visit www.healthprofiles.info

or scan this Quick Response code: for more profiles, more information and interactive maps and tools.

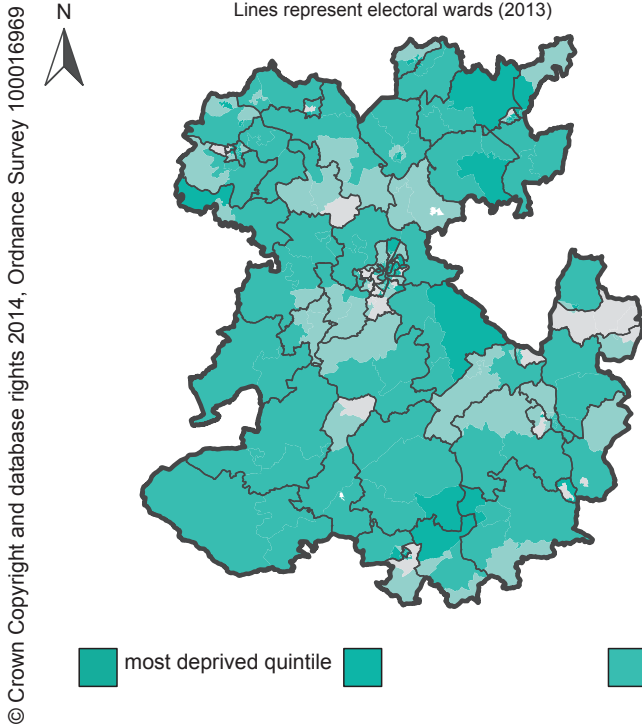


Follow [@healthprofiles](https://twitter.com/healthprofiles) on Twitter

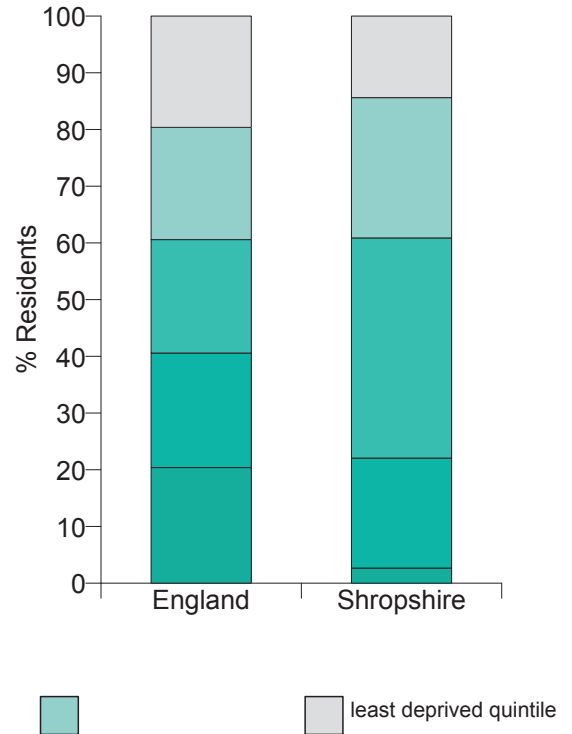
* rate per 100,000 population

Deprivation: a national view

The map shows differences in deprivation levels in this area based on national quintiles (fifths) of the Index of Multiple Deprivation 2010 by Lower Super Output Area. The darkest coloured areas are some of the most deprived areas in England.



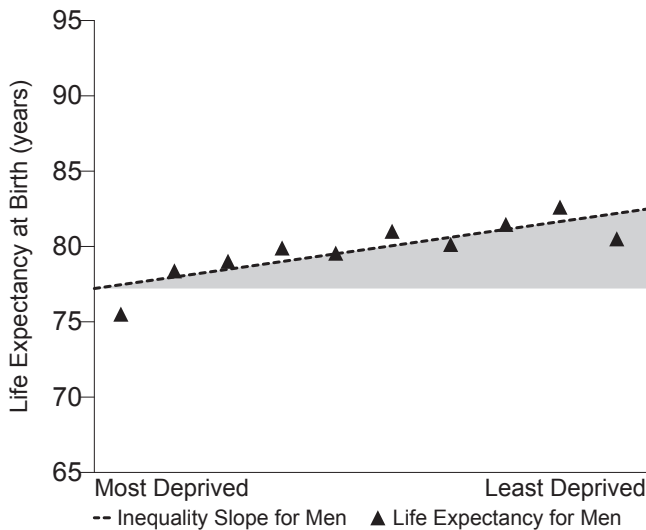
This chart shows the percentage of the population in England and this area who live in each of these quintiles.



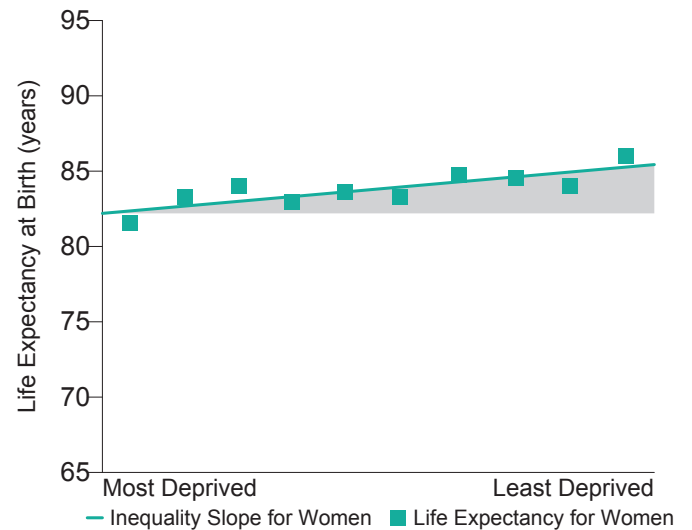
Life Expectancy: inequalities in this local authority

The charts below show life expectancy for men and women in this local authority for 2010-2012. Each chart is divided into deciles (tenths) by deprivation, from the most deprived decile on the left of the chart to the least deprived decile on the right. The steepness of the slope represents the inequality in life expectancy that is related to deprivation in this local area. If there were no inequality in life expectancy as a result of deprivation, the line would be horizontal.

Life Expectancy Gap for Men: 5.3 years

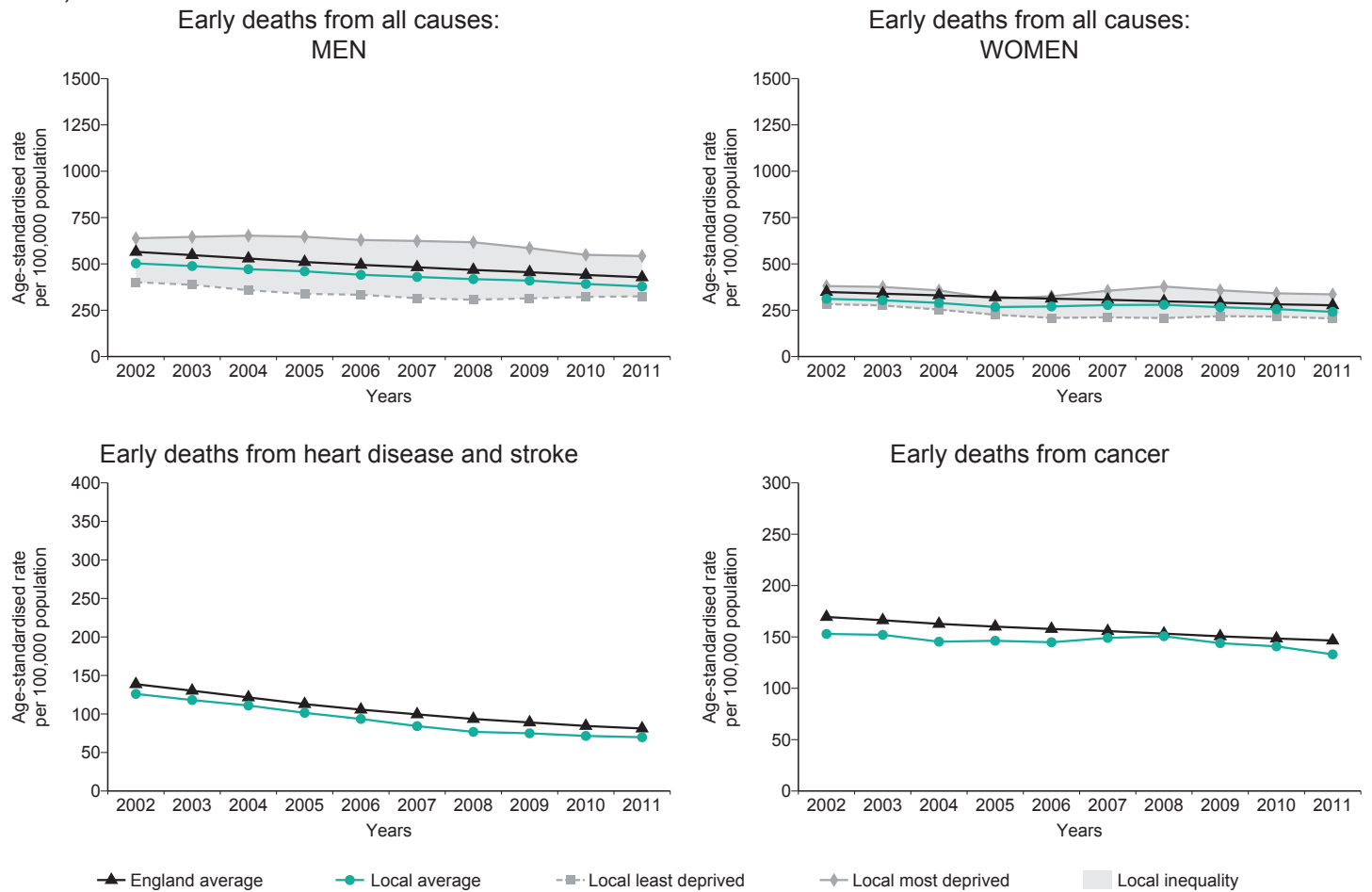


Life Expectancy Gap for Women: 3.2 years



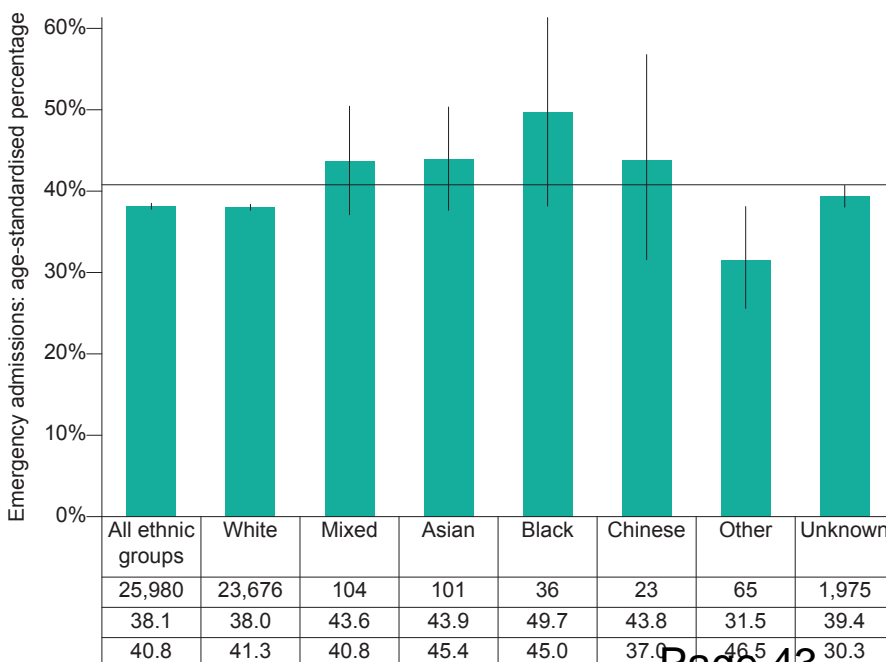
Health inequalities: changes over time

These charts provide a comparison of the changes in early death rates (in people under 75) between this area and all of England. Early deaths from all causes also show the differences between the most and least deprived quintile in this area. (Data points are the midpoints of 3 year averages of annual rates, for example 2005 represents the period 2004 to 2006).



Health inequalities: ethnicity

Percentage of hospital admissions that were emergencies, by ethnic group



This chart shows the percentage of hospital admissions in 2012/13 that were emergencies for each ethnic group in this area. A high percentage of emergency admissions may reflect some patients not accessing or receiving the care most suited to managing their conditions. By comparing the percentage in each ethnic group in this area with that of the whole population of England (represented by the horizontal line) possible inequalities can be identified.

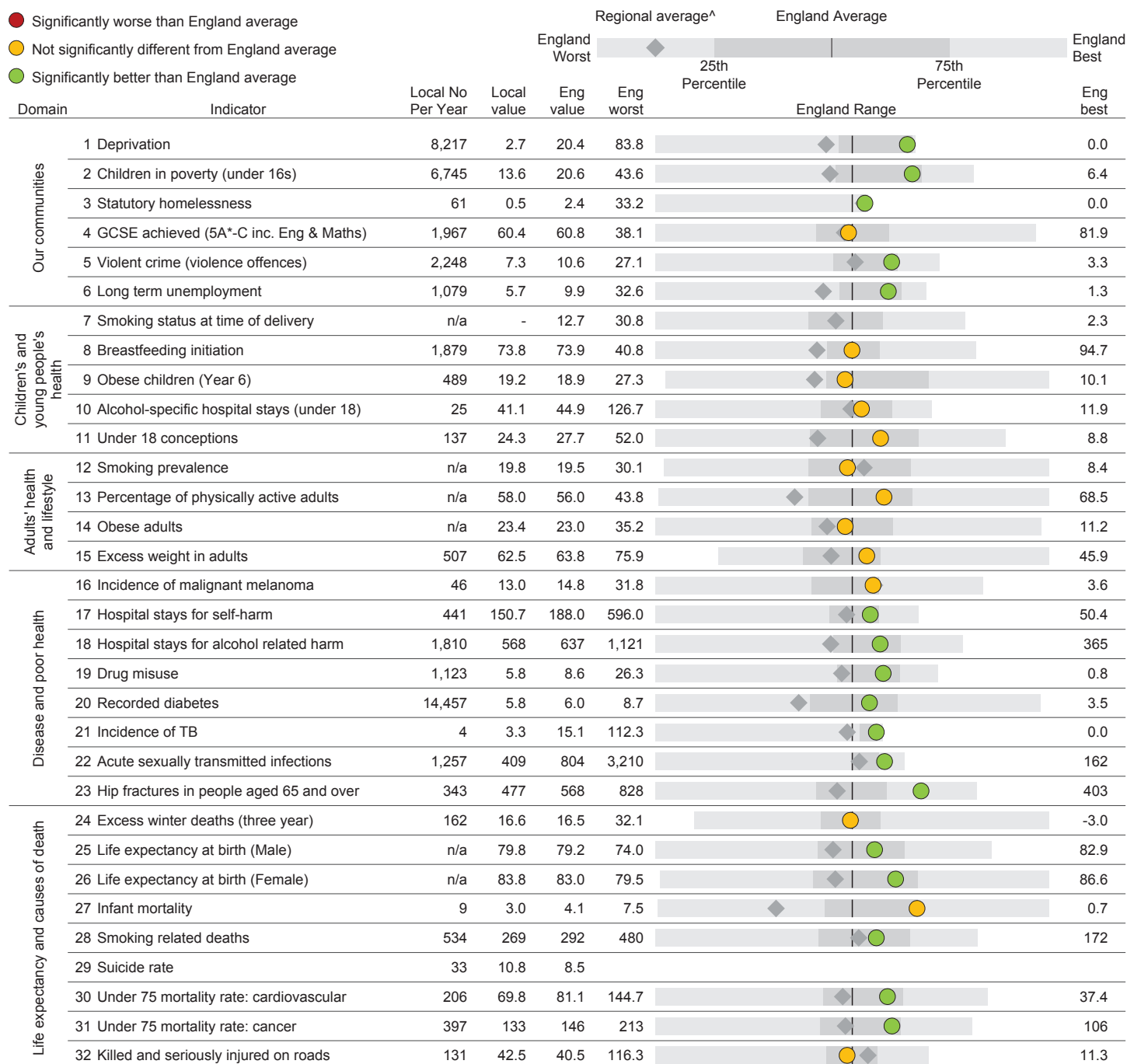
■ Shropshire
 — England average (all ethnic groups)
 | 95% confidence interval

Figures based on small numbers of admissions have been suppressed to avoid any potential disclosure of information about individuals.

| | | | | | | | | |
|--------|--------|------|------|------|------|------|-------|--------------------------------------|
| 25,980 | 23,676 | 104 | 101 | 36 | 23 | 65 | 1,975 | Local number of emergency admissions |
| 38.1 | 38.0 | 43.6 | 43.9 | 49.7 | 43.8 | 31.5 | 39.4 | Local value |
| 40.8 | 41.3 | 40.8 | 45.4 | 45.0 | 37.0 | 46.5 | 30.3 | England value |

Health Summary for Shropshire

The chart below shows how the health of people in this area compares with the rest of England. This area's result for each indicator is shown as a circle. The average rate for England is shown by the black line, which is always at the centre of the chart. The range of results for all local areas in England is shown as a grey bar. A red circle means that this area is significantly worse than England for that indicator; however, a green circle may still indicate an important public health problem.



Indicator Notes

1 % people in this area living in 20% most deprived areas in England, 2010 **2** % children (under 16) in families receiving means-tested benefits & low income, 2011 **3** Crude rate per 1,000 households, 2012/13 **4** % key stage 4, 2012/13 **5** Recorded violence against the person crimes, crude rate per 1,000 population, 2012/13 **6** Crude rate per 1,000 population aged 16-64, 2013 **7** % of women who smoke at time of delivery, 2012/13 **8** % of all mothers who breastfeed their babies in the first 48hrs after delivery, 2012/13 **9** % school children in Year 6 (age 10-11), 2012/13 **10** Persons under 18 admitted to hospital due to alcohol-specific conditions, crude rate per 100,000 population, 2010/11 to 2012/13 (pooled) **11** Under-18 conception rate per 1,000 females aged 15-17 (crude rate) 2012 **12** % adults aged 18 and over, 2012 **13** % adults achieving at least 150 mins physical activity per week, 2012 **14** % adults classified as obese, Active People Survey 2012 **15** % adults classified as overweight or obese, Active People Survey 2012 **16** Directly age standardised rate per 100,000 population, aged under 75, 2009-2011 **17** Directly age sex standardised rate per 100,000 population, 2012/13 **18** The number of admissions involving an alcohol-related primary diagnosis or an alcohol-related external cause, directly age standardised rate per 100,000 population, 2012/13 **19** Estimated users of opiate and/or crack cocaine aged 15-64, crude rate per 1,000 population, 2010/11 **20** % people on GP registers with a recorded diagnosis of diabetes 2012/13 **21** Crude rate per 100,000 population, 2010-2012 **22** Crude rate per 100,000 population, 2012 (chlamydia screening coverage may influence rate) **23** Directly age and sex standardised rate of emergency admissions, per 100,000 population aged 65 and over, 2012/13 **24** Ratio of excess winter deaths (observed winter deaths minus expected deaths based on non-winter deaths) to average non-winter deaths 1.08.09-31.07.12 **25** At birth, 2010-2012 **26** At birth, 2010-2012 **27** Rate per 1,000 live births, 2010-2012 **28** Directly age standardised rate per 100,000 population aged 35 and over, 2010-2012 **29** Directly age standardised mortality rate from suicide and injury of undetermined intent per 100,000 population, 2010-2012 **30** Directly age standardised rate per 100,000 population aged under 75, 2010-2012 **31** Directly age standardised rate per 100,000 population aged under 75, 2010-2012 **32** Rate per 100,000 population, 2010-2012 ^A "Regional" refers to the former government regions.

More information is available at www.healthprofiles.info Please send any enquiries to healthprofiles@phe.gov.uk

© Crown copyright, 2014. You may re-use this information (not including logos) free of charge in any format or medium, under the terms of the Open Government Licence. To view this licence, visit www.nationalarchives.gov.uk/doc/open-government-licence



Shropshire Clinical Commissioning Group



Health and Wellbeing Board 18 July 2014

UPDATE FROM THE SHROPSHIRE, TELFORD & WREKIN LOCAL NATURE PARTNERSHIP (LNP)

Responsible Officer

Email: Dan.wrench@shropshire.gov.uk

Tel: 01743 252529

1. Summary

[Local Nature Partnerships \(LNPs\)](#) are partnerships of a broad range of local organisations, businesses and people who aim to help bring about improvements in their local natural environment. They aim to make sure that its value, and the value of the services it provides to the economy and the people who live there, is taken into account in local decisions, for example about planning and development.

Setting up LNPs was one of the commitments made in the [Natural Environment White Paper 2011](#) and there are now 48 LNPs across England providing almost complete coverage.

LNPs are being encouraged to work at a large scale, which we call 'landscape-scale', and to identify Nature Improvement Areas using well established [criteria](#).

LNPs are referenced in statutory guidance on JSNAs and Joint Health and Wellbeing Strategies (JHWSs) under [Section 5 'working in partnership'](#)

LNPs are also referenced in the National Planning Policy Framework 2012:

"Local planning authorities should work collaboratively on strategic planning priorities to enable delivery of sustainable development in consultation with Local Enterprise Partnerships and Local Nature Partnerships"

Shropshire, Telford & Wrekin LNP has been formally recognised by Defra since July 2012 and has been coordinated by Shropshire Council since January 2012. Six months of staff time funding was provided to Shropshire Council to help establish the LNP but following this only staff time and a little funding for specific project work has been available. Our LNP is chaired by Cllr Cecilia Motley and we work closely with Herefordshire LNP partly due to the shared Marches LEP boundary. Rod Thompson and Miranda Ashwell share the representation role on the LNP Board.

Current areas of work for the LNP include:

1. developing a Natural Environment Investment Prospectus for the Marches area
2. involvement in a Marches LEP workshop as part of the [Local Environment and Economic Development \(LEED Toolkit\)](#)
3. lobbying government for the reinstatement of the Aggregates Levy Sustainability Fund.

1. The Natural Environment Investment Prospectus will provide a background to the concept of [Natural Capital](#) (our stock of natural resources that underpins our economy and well-being) and the role of the LNP in enhancing this capital. This will be followed by a series of best practice examples of natural capital (natural assets) management, Payment for Ecosystem Services, and other examples of where natural capital is enhanced in a way that has positive economic and social impacts. The prospectus will finish with proposals for future investment opportunities in the natural environment that are likely to have greatest return on investment. The document will be used to guide applicants for [European Structural and Investment Funds](#) – particularly under the ‘Supporting the Environment’ and ‘Supporting the Shift Towards a Low Carbon Economy’ strategic activities. The Prospectus will be launched in Autumn / Winter 2014 to a selection of business leaders and others who are likely to influence the management of natural capital.
2. On July 2nd the Marches LEP held the initial workshop stage of the LEED Toolkit. The purpose of this event was to systematically consider the evidence relating to the local economy / environment relationship in order to reveal opportunities and threats to the delivery of the Marches LEP Strategic Economic Plan (SEP) and to consider appropriate responses to them. The event attracted a good turnout including the LEP Chair and the national Defra lead for LNPs. Feedback is due in early August.
3. The LNP is leading a national call to government for the re-instatement of the Aggregates Levy Sustainability Fund. The ALSF provided LAs and other administering bodies with a relatively small but very useful fund which primarily helped mitigate the impacts of the quarrying industry on local communities and the environment. Shropshire Council previously administered part of this fund (£100k) and also drew in funds from national pots for a variety of projects which supported posts in the Council and local businesses. The Mineral Products Association and specific aggregate extraction companies are also behind the reinstatement due to the positive influence the fund had on the image of their industry and future planning applications.

2. Recommendations

- a) There are considerable areas of overlap with preventative interventions and the objectives of the LNP. Green infrastructure and tourism are areas of particular interest for the LNP which can also have significant impact on health and well-being.
- b) The LNP would welcome input from the Health and Wellbeing Board particularly for the Natural Environment Investment Prospectus where case-studies or future investment opportunities with health impacts could be included.

3. Risk Assessment and Opportunities Appraisal

(NB This will include the following: Risk Management, Human Rights, Equalities, Community, Environmental consequences and other Consultation)

4. Financial Implications

Any financial input to the LNP would be very welcome. Currently there is none.

5. Background

6. Additional Information

7. Conclusions

List of Background Papers (This MUST be completed for all reports, but does not include items containing exempt or confidential information)

To right are QR (Quick Response) codes for quickly accessing these links using smart phones or tablets. The Google Goggles 'app' is one of many that can read them.

The Terms of Reference (including objectives and structure) are available here: http://bit.ly/LNP_TOR



The role of Local Nature Partnerships:

<https://www.gov.uk/government/publications/role-of-local-nature-partnerships-an-overview>



Natural Environment White Paper 2011 -

<https://www.gov.uk/government/publications/natural-environment-white-paper-implementation-updates>



Local Environment and Economic Development (LEED Toolkit):

<http://www.naturalengland.org.uk/ourwork/planningdevelopment/LEP-citydeals/leedtoolkit.aspx>



Definition of 'Natural Capital' from the Natural Capital Committee:

<https://www.naturalcapitalcommittee.org/natural-capital.html>



European Structural and Investment Funds:

http://www.marcheslep.org.uk/document-library/cat_view/12-eu-strategy-investment-fund



Cabinet Member (Portfolio Holder)

Mal Price

Local Member

Appendices

This page is intentionally left blank